



Global Product Portfolio

Dispensing Closures





A better fit, a better experience

At Silgan Dispensing, we pride ourselves on creating state-of-the-art packaging solutions for the world's most admired brands. Together, our insight, expertise, ingenuity and agility provide our customers and theirs with a better dispensing experience.

Whether you are in the market for a standard or fully customized closure, we will collaborate closely with you on a solution that delivers superior performance, outstanding differentiation and seamless production. And, because we offer many customization capabilities in-house, we're able to create sophisticated closures that fit your needs without compromising speed-to-market.

If you're looking to deepen your understanding of consumer preference, improve product performance and serve up a fresher, safer and more convenient dispensing experience—we're here to help.



Standard Dispensing Closures

Spouts

Spouted and Applicator

- Pinpoint directional dispensing
- Dual color capability
- Orifice sizes from dropper to large rectangle
- Lining capability
- Child-resistant options available
- Friction fit and threaded
- Custom and stock
- Popular sizes for bottles, tubes and cans
- Ideal for chemical, automotive, household products and more



Polycam

Snap-Action and One-Piece Closures

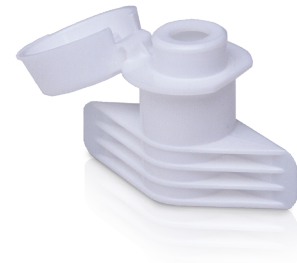
- Innovative designs for bottles, tubes and bottles
- Attractive smooth wall and serrated style
- Custom and stock
- Logo insert capability
- Lining capability
- Ergonomic thumb lifts
- Easy open/easy close
- Non-protruding hinges
- Clog-resistant orifices
- Friction fit and threaded
- Orifice sizes 1.5 mm (0.060") to 18.5 mm (0.728")



FlexFit™

One-Piece, Flip-Top Pouch Fitment

- Convenient, single-piece closure
- Quick and easy-to-use flip top
- Latch back feature allows for mess-free dispensing
- Less material than similar closures on the market
- Orifice sizes: 8.6 mm round, 6 mm round and 4x8.6 mm ribbon
- Suitable for food and non-food applications

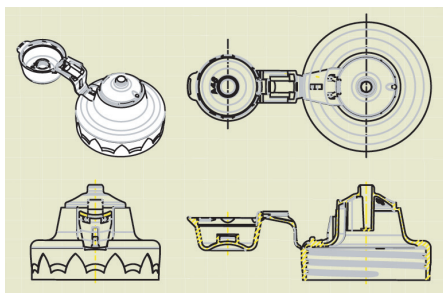


Custom Dispensing Closures

Silgan Dispensing will assist you in bringing your ideas from concept to completion.

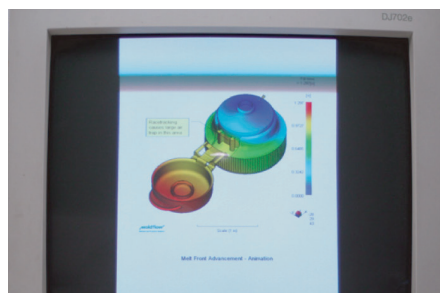
Design phase

- Industrial design
- 3D concept renderings
- SLA presentation models



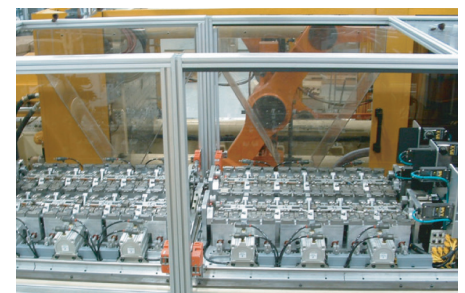
Engineering phase

- Mold filling analysis
- Finite element analysis
- Prototype molded samples



Production phase

- High-volume turnkey systems
- Robotic automation
- 100% vision inspection



Spouted 28 mm



PS254

SSize/Finish
28/400

Seal Type
Land

Lining
Yes

Emboss
No

Orifice Sizes
3 mm x 6 mm,
3 mm, 2.5 mm,
2 mm, 1 mm



PS255

Size/Finish
28/400

Seal Type
Combination

Lining
No

Emboss
No

Orifice Sizes
3 mm, 1.5 mm



PS256

Size/Finish
28/400

Seal Type
Land

Lining
Yes

Emboss
No

Orifice Sizes
3 mm, 1.5 mm



PS121

Size/Finish
28/410

Seal Type
Land

Lining
No

Emboss
No

Orifice Sizes
3 mm, 2.5 mm,
2 mm, 1 mm



PS134

Size/Finish
28/410

Seal Type
Land

Lining
No

Emboss
No

Orifice Sizes
3 mm x 6 mm,
3 mm x 4.5 mm,
2.5 mm, 3 mm,
2.5 mm, 2 mm,
1 mm



PS168

Size/Finish
28/410

Seal Type
Valve

Lining
No

Emboss
No

Orifice Sizes
3 mm, 2.5 mm,
2 mm, 1 mm



PS218

Size/Finish
28/410

Seal Type
Combination

Lining
No

Emboss
No

Orifice Sizes
3 mm, 2.5 mm,
2 mm, 1 mm



PS187

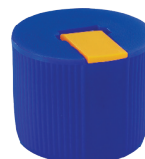
Size/Finish
28/410

Seal Type
Valve

Lining
No

Emboss
No

Orifice Sizes
3 mm x 6 mm,
3 mm x 4.5 mm,
3 mm, 2.5 mm,
2 mm, 1 mm



PS259

Size/Finish
28/410

Seal Type
Liner

Lining
Yes

Emboss
No

Orifice Sizes
3 mm x 6 mm,
3 mm x 4.5 mm,
3 mm, 2.5 mm,
2 mm, 1 mm



PS326

Size/Finish
28/410

Seal Type
Land

Lining
Yes

Emboss
No

Orifice Sizes
3 mm x 6 mm,
3 mm x 4.5 mm,
3 mm, 2.5 mm,
2 mm, 1 mm



PS352

Size/Finish
28/410

Seal Type
Arc

Lining
Yes

Emboss
No

Orifice Sizes
3 mm x 6 mm,
3 mm x 4.5 mm,
3 mm, 2.5 mm,
2 mm, 1 mm

Spouted 24 mm



PS110

Size/Finish
24/410
Seal Type
Combination
Lining
No

Emboss
No
Orifice Sizes
3 mm, 2.5 mm,
1 mm



PS146

Size/Finish
24/410
Seal Type
Land
Lining
No

Emboss
No
Orifice Sizes
3 mm, 2.5 mm,
1 mm



PS147

Size/Finish
24/410
Seal Type
Valve
Lining
No

Emboss
No
Orifice Sizes
3 mm, 2.5 mm,
1 mm



PS258

Size/Finish
24/410
Seal Type
Land
Lining
Yes

Emboss
No
Orifice Sizes
3 mm x 6 mm,
3 mm x 4.5 mm,
3 mm, 2.5 mm,
2 mm, 1 mm



PS202

Size/Finish
24/410
Seal Type
Land
Lining
Yes

Emboss
No
Orifice Sizes
4 mm, 3 mm,
2.5 mm,
2 mm, 1 mm

Spouted 20 mm



PS115

Size/Finish
20/410
Seal Type
Land
Lining
No

Emboss
No
Orifice Sizes
3 mm, 2.5 mm,
2 mm, 1 mm



PS149

Size/Finish
20/410
Seal Type
Valve
Lining
No

Emboss
No
Orifice Sizes
3 mm, 2.5 mm,
2 mm, 1 mm



PS249

Size/Finish
20/410
Seal Type
Valve
Lining
No

Emboss
No
Orifice Sizes
3 mm, 2.5 mm,
2 mm, 1 mm

Polycam Smooth Walled



PS356

Size/Finish
24/410

Seal Type
Arc

Lining
Yes

Emboss
No

Orifice Sizes
6 mm,
4.75 mm,
3 mm, 1.5 mm



PS357

Size/Finish
24/415

Seal Type
Arc

Lining
No

Emboss
No

Orifice Sizes
6 mm,
4.75 mm,
3 mm, 1.5 mm



PS370

Size/Finish
28/410

Seal Type
Arc

Lining
Yes

Emboss
Yes

Orifice Sizes
6 mm,
4.75 mm,
3 mm, 1.5 mm



PS371

Size/Finish
28/415

Seal Type
Arc

Lining
No

Emboss
Yes

Orifice Sizes
6 mm,
4.75 mm,
3 mm, 1.5 mm



PS433

Size/Finish
28/410

Seal Type
Arc

Lining
Yes

Emboss
Yes

Orifice Sizes
6 mm,
4.75 mm,
3 mm, 1.5 mm

Polycam Inverted



PS408

Size/Finish
33/400

Seal Type
Arc

Lining
Yes

Emboss
No

Orifice Sizes
4 mm
Enhanced
Flow
Dispense



PS412

Size/Finish
33/400

Seal Type
Liner

Lining
Yes

Emboss
No

Orifice Sizes
6 mm
Baffled Flow
Dispense



PS413

Size/Finish
33/400

Seal Type
Liner

Lining
Yes

Emboss
No

Orifice Sizes
4.75 mm
x 19 mm
Ribbon



PS407

Size/Finish
38/400

Seal Type
Arc

Lining
Yes

Emboss
No

Orifice Sizes
4 mm
Enhanced
Flow
Dispense



PS409

Size/Finish
38/400

Seal Type
Arc

Lining
Yes

Emboss
No

Orifice Sizes
9.5 mm
Flow Through
Dispense



PS410

Size/Finish
38/400

Seal Type
Arc

Lining
Yes

Emboss
No

Orifice Sizes
6 mm
Baffled Flow
Dispense



PS414

Size/Finish
38/400

Seal Type
Liner

Lining
Yes

Emboss
No

Orifice Sizes
4.75 mm
x 19 mm
Ribbon



PS420

Size/Finish
38/400

Seal Type
Liner

Lining
Yes

Emboss
No

Orifice Sizes
18.5 mm
Flow Through
Dispense

Polycam Serrated/Food Closures



PS416

Size/Finish
38/400

Seal Type
Arc

Lining
Yes

Emboss
Yes

Orifice Sizes
7.6 mm
Baffled
Flow
Dispense



PS423

Size/Finish
38/400

Seal Type
Liner

Lining
Yes

Emboss
Yes

Orifice Sizes
Teardrop
w/ Pour Lip



PS368

Size/Finish
38/400

Seal Type
Liner

Lining
Yes

Emboss
Yes

Orifice Sizes
12.7 mm,
9.5 mm, 6 mm,
4 mm



PS381

Size/Finish
38/400

Seal Type
Arc

Lining
Yes

Emboss
Yes

Orifice Sizes
5 mm
x 24.5 mm
Ribbon



PS385

Size/Finish
38/400

Seal Type
Liner

Lining
Yes

Emboss
Yes

Orifice Sizes
5 mm
x 24.5 mm
Ribbon



PS386

Size/Finish
38/400

Seal Type
Arc

Lining
Yes

Emboss
Yes

Orifice Sizes
9.5 mm, 6 mm



PS354

Size/Finish
33/400

Seal Type
Liner

Lining
Yes

Emboss
No

Orifice Sizes
6 mm, 3 mm



PS439

Size/Finish
38/400

Seal Type
Liner

Lining
Yes

Emboss
Yes

Orifice Sizes
7.6 mm
Baffled Flow
Dispense



PS405

Size/Finish
33/400

Seal Type
Flexible Arc

Lining
Yes

Emboss
No

Orifice Sizes
6 mm Keyhole



PS446

Size/Finish
38/400

Seal Type
Liner

Lining
Yes

Emboss
Yes

Orifice Sizes
Silicone Valve

Tube Closures



PS391

Size/Finish
1.375" M8

Seal Type
"V"

Lining
Yes

Emboss
Yes

Orifice Sizes
6 mm, 4.75 mm,
3 mm, 1.5 mm



PS441

Size/Finish
1.375" M8
Matte

Seal Type
"V"

Lining
Yes

Emboss
Yes

Orifice Sizes
6 mm, 4.75 mm,
3 mm, 1.5 mm



PS418

Size/Finish
1.5" 22/400

Seal Type
"V"

Lining
Yes

Emboss
Yes

Orifice Sizes
9.5 mm, 6 mm,
4.75 mm, 3 mm



PS442

Size/Finish
1.5" 22/400
Matte

Seal Type
"V"

Lining
Yes

Emboss
No

Orifice Sizes
9.5 mm, 6 mm,
4.75 mm, 3 mm



PS392

Size/Finish
2" 22/400
Snap On

Seal Type
Plug

Lining
No

Emboss
Yes

Orifice Sizes
6 mm,
4.75 mm,
3 mm



PS419

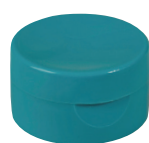
Size/Finish
2" 22/400

Seal Type
"V"

Lining
Yes

Emboss
Yes

Orifice Sizes
9.5 mm, 6 mm,
4.75 mm, 3 mm,
1.5 mm



PS406

Size/Finish
2" 22/400

Seal Type
"V"

Lining
Yes

Emboss
No

Orifice Sizes
9.5 mm, 6 mm,
4.75 mm, 3 mm



PS415

Size/Finish
2" 22/400

Seal Type
"V"

Lining
Yes

Emboss
Yes

Orifice Sizes
9.5 mm, 6 mm,
4.75 mm, 3 mm



PS425

Size/Finish
2" 22/400
Matte

Seal Type
"V"

Lining
Yes

Emboss
Yes

Orifice Sizes
9.5 mm, 6 mm,
4.75 mm, 3 mm



PS444

Size/Finish
1.5" 22/400
Matte

Seal Type
"V"

Lining
Yes

Emboss
Yes

Orifice Sizes
9.5 mm, 6 mm,
4.75 mm, 3 mm



PS445

Size/Finish
1.5" 22/400

Seal Type
"V"

Lining
Yes

Emboss
Yes

Orifice Sizes
9.5 mm, 6 mm,
4.75 mm, 3 mm



PS448 (HDPE)

Size/Finish
2" 22/400

Seal Type
"V"

Lining
Yes

Emboss
Yes

Orifice Sizes
9.5 mm, 6 mm,
4.75 mm, 3 mm,
1.5 mm



PS450 (HDPE)

Size/Finish
1.5" 22/400

Seal Type
"V"

Lining
Yes

Emboss
Yes

Orifice Sizes
9.5 mm, 6 mm,
4.75 mm, 3 mm

Unique/Double Walled



PS424

Size/Finish
Pouch Fitment

Seal Type
N/A

Lining
Yes

Emboss
No

Orifice Sizes
6 mm



PS429

Size/Finish
Pouch Fitment

Seal Type
N/A

Lining
Yes

Emboss
No

Orifice Sizes
8.6 mm



PS430

Size/Finish
Pouch Fitment

Seal Type
N/A

Lining
Yes

Emboss
No

Orifice Sizes
4 mm x 8.6 mm
Ribbon



PS436

Size/Finish
43 mm SpH

Seal Type
Plug

Lining
No

Emboss
Yes

Orifice Sizes
19.5 mm



PS426

Size/Finish
38 mm SpH CR
(Ratchet)

Seal Type
Liner

Lining
Yes

Emboss
No



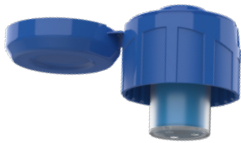
PS428

Size/Finish
38 mm SpH
CR (Non-
Ratchet)

Seal Type
Liner

Lining
Yes

Emboss
No



MeaSURE™ 2

Size/Finish
28/410

Seal Type
Modified "V"

Lining
No

Emboss
No

Orifice Sizes
Silicoo Valve
or 5.0 mm

Friction Fit & Child-Resistant/ Applicator Caps



PS417

Size/Finish	Emboss
33/400	No
Seal Type	Orifice Sizes
Valve	3.8 mm
Lining	
No	



PS211

Size/Finish	Emboss
28/410 CR	No
Seal Type	Orifice Sizes
Valve	2 mm x 2 mm, 4 mm, 3 mm, 2 mm
Lining	
No	

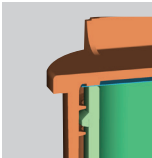


PS186

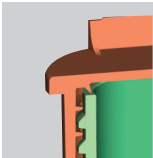
Size/Finish	Emboss
5/8" FF, CR	No
Seal Type	Orifice Sizes
Valve	0.8 mm
Lining	
No	

CR caps may be included in child-resistant applications when appropriately tested and certified using your completed package.

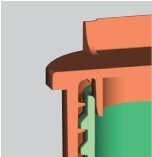
Seal Types



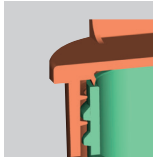
Flat/Liner Seal



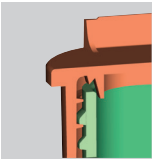
Arc Seal



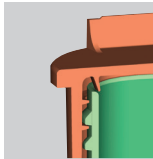
Plug Seal



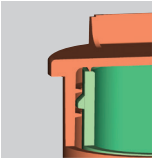
Land Seal



Combination Land
and Valve Seal

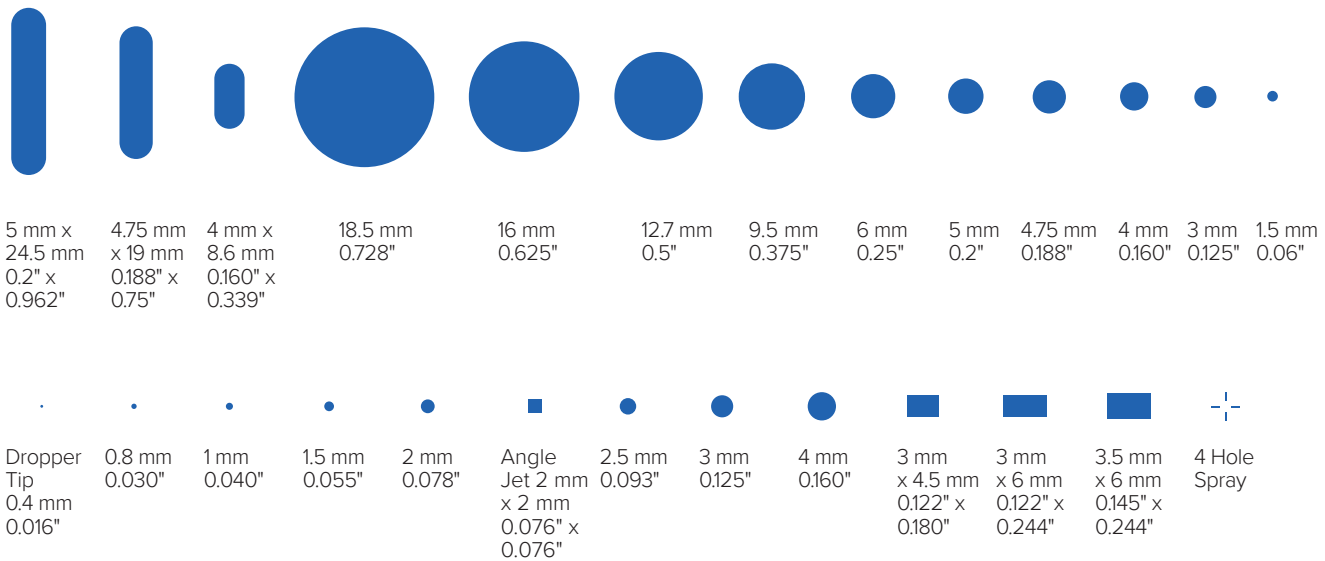


Valve Seal



“V” Seal

Orifice Sizes



We remain your leading supplier for one-stop, in-house color capabilities. We proudly offer onsite color matching, formulation and compounding, resulting in low colorant costs and the quickest turnaround for colorant in the industry.



Elevating the experience worldwide

With our responsive global network and team, you get a partner that's committed to delivering better experiences that move your brand and business forward.

silgandispensing.com/our-locations