



## CondiCaps

### Controlled Dispensing // Enhanced Recyclability

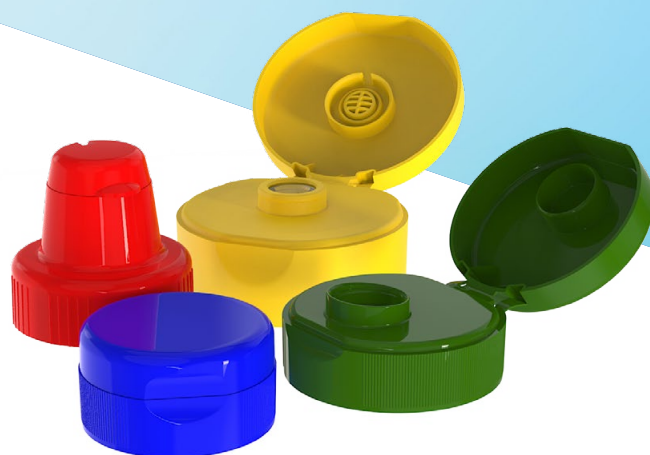
CondiCap closures combine premium quality with clean, controlled dispensing for sauces and condiments. Made from polypropylene, the range includes various designs, diameters, threads, and orifices. Versions featuring our 100% recyclable valve enhance the overall recyclability of the packaging. With their functional design and reliable hinge, they ensure outstanding consumer convenience. CondiCap closures are engineered for smooth processing on high-speed filling lines, making them the perfect choice for a wide range of food applications.



# CondiCaps

## Premium dispensing closures

- For food applications like sauces, dressings and condiments
- Applicable for many different viscosities
- Suitable for PET and PP/PE bottles
- Wide array of bottle geometries possible
- Valve and non-valve orifices
- PP mono-material closures
- Active hinge, easy opening and closing
- Available with Induction Seal Liners



### Designs and Specifications

#### Neck size 33/400

Flip-Top	Outer Diameter	Height	Orifice	Description	Item #
Standard	1 3/8" (34 mm)	0.72" (18.3 mm)	0.250" (6.4 mm)	High Gloss, Fine Ribbed	4681
Standard	1 3/8" (34 mm)	0.72" (18.3 mm)	0.375" (9.5 mm)	High Gloss, Fine Ribbed	4682
Standard	1 3/8" (34 mm)	0.72" (18.3 mm)	0.500" (12.7 mm)	High Gloss, Fine Ribbed	4683
Standard	1 3/8" (34 mm)	0.63" (16 mm)	0.250" (6.4 mm)	High Gloss, Fine Ribbed Short	6140
Standard	1 3/8" (34 mm)	0.63" (16 mm)	0.375" (9.5 mm)	High Gloss, Fine Ribbed Short	6141
Spouted	1 3/8" (34 mm)	1.30" (33.1mm)	0.160" (4 mm)	High Gloss, Ribbed	5553

Flat	2" (48 mm)	0.97" (24.7 mm)	Valve	High Gloss	4730
Flat	2 1/8" (56 mm)	0.88" (22.5 mm)	Valve	Matt, Ribbed	6045
Flat	2 1/8" (56 mm)	0.88" (22.5 mm)	0.250" (6.4 mm)	Matt, Ribbed	5497



33/400  
0.375" orifice



33/400 Spouted  
0.16" orifice

#### Neck size 38/400

Flip-Top	Outer Diameter	Height	Orifice	Description	Item #
Standard	1 5/8" (40 mm)	0.75" (19 mm)	0.250" (6.4 mm)	High Gloss, Fine Ribbed	4677
Standard	1 5/8" (40 mm)	0.75" (19 mm)	0.375" (9.5 mm)	High Gloss, Fine Ribbed	4678
Standard	1 5/8" (40 mm)	0.75" (19 mm)	0.500" (12.7 mm)	High Gloss, Fine Ribbed	4679
Standard	1 5/8" (40 mm)	0.63" (16 mm)	0.250" (6.4 mm)	High Gloss, Fine Ribbed Short	6073
Standard	1 5/8" (40 mm)	0.63" (16 mm)	Ribbon	High Gloss, Fine Ribbed Short	6074
Standard	1 5/8" (40 mm)	0.76" 19.5 mm	Valve	High Gloss, Fine Ribbed	5194

Flat	2" (48 mm)	0.97" (24.7 mm)	0.500" (12.7 mm)	High Gloss	4687
Flat	2" (48 mm)	0.97" (24.5 mm)	Valve	Matt	6199
Flat	2 1/8" (56 mm)	0.97" (24.5mm)	Valve	Matt	6221



38/400  
valve



38/400  
0.5" orifice