



Global Product Portfolio
Cross-Market
Catalog



Elevate the Dispensing Experience

Silgan Dispensing is your packaging partner for the new marketplace, delivering the insight, expertise, ingenuity and agility you need to create a better experience. Our broad portfolio and tailored approach allow us to offer solutions that solve your specific challenges while still meeting the high expectations of your customers.

Table of Contents

1	Beauty Dispensing Systems
9	Personal Care Dispensing Systems
12	Foam Dispensing Systems
16	Fragrance Dispensing Systems
26	Home & Garden Dispensing Systems
36	Healthcare Dispensing Systems
41	Dispensing Closures



Beauty Dispensing Systems



Airless Systems



DNA 27 PETG

Key Features

- Headlining of the formula and differentiation
- A highly transparent glass polymer bottle in PETG material
- Protection of the most sensitive formula with a neutral engine
- Extra-smooth actuation even with the most viscous formulas
- Convenient and comfortable to use with a 360° application
- Flexible integration in your industrial process (atmospheric and airless filling)

Closure Sizes

Snap-on 27 mm

Output

0.25 ml

Bottle Sizes

20, 30 ml

Applications

Skincare, makeup



DNA 32

Key Features

- Protection of the most sensitive formulas with a neutral engine
- Extra-smooth actuation even with the most viscous formulas
- Convenient and comfortable to use with a 360° application
- Flexible integration into your industrial process (atmospheric and airless filling)
- Highly customizable

Closure Sizes

Snap-on 32 mm

Output

0.25 ml

Bottle Sizes

15, 20, 30, 40, 50 ml

Applications

Skincare, makeup



DNA 32 PETG

Key Features

- A highly transparent glass polymer bottle in PETG material
- Protection of the most sensitive formulas with a neutral engine
- Extra-smooth actuation even with the most viscous formulas
- Convenient and comfortable to use with a 360° application
- Flexible integration into your industrial process (atmospheric and airless filling)
- Highly customizable

Closure Sizes

Snap-on 32 mm

Output

0.25 ml

Bottle Sizes

30 ml

Applications

Skincare, makeup



DNA 35

Key Features

- Protection of the most sensitive formulas with a neutral engine
- Extra-smooth actuation even with the most viscous formulas
- Convenient and comfortable to use with a 360° application
- Flexible integration into your industrial process (atmospheric and airless filling)
- Highly customizable

Closure Sizes

Snap-on 35 mm

Output

0.25 ml

Bottle Sizes

30, 40, 50 ml

Applications

Skincare, makeup



Lyric® Airless

Key Features

- Ideal for high-viscosity formulation thanks to disk valve engine
- Excellent strokes-to-prime
- Soft force-to-actuate for greater consumer experience
- Slim bottle OD, easy to customize to double-wall structure
- Metal-free Pure Path™ engine for better formula protection

Closure Sizes

Straight snap-on closure

Output

0.15, 0.20 ml

Applications

Skincare, makeup, high-viscosity formulas



* ISTA-6A
Third Party Amazon
Testing Lab Certified

Pearl® 2

Key Features

- Enhanced sustainability with elimination of non-recyclable materials
- High single material concentration: 91.86% PP and 8.14% PE
- Superior protection against oxidation, enabling preservative-free, natural ingredients
- ~ 95% evacuation rate
- High compatibility across formulations and viscosities
- Broad decoration and color options
- E-commerce certified*
- Vacuum tested for leak-free, on-the-go travel

Closure Sizes

48 mm

Output

1 ml

Bottle Sizes

50, 75, 100 ml

Applications

Creams, gels, lotions



Pearl® Airless

Key Features

- Extremely low force-to-actuate
- All-plastic system for clean, metal-free dispensing
- Excellent evacuation rate
- Fewer strokes-to-prime and less re-priming issues during use
- Low part count and light weight for additional supply chain benefits
- Rolling Bellow Technology™ provides comfortable, consistent dispensing
- Wide-mouth, top-fill design offers optimal filling parameters
- Fully customizable
- Pearl Baby Bear head available

Closure Sizes

48 mm

Heads

Standard, Baby Bear

Output

1 ml

Bottle Sizes

50, 100, 150, 200 ml

Applications

Skincare, body care, hair care, personal care, lotions, medium- to high-viscosity formulas



Pearl® Mini Airless

Key Features

- Extremely low force-to-actuate
- All-plastic system for clean, metal-free dispensing
- Excellent evacuation rate
- Fewer strokes-to-prime and less re-priming issues during use
- Low part count and light weight for additional supply chain benefits
- Rolling Bellow Technology™ provides comfortable, consistent dispensing
- Wide-mouth, top-fill design offers optimal filling parameters
- Fully customizable

Closure Sizes

32 mm

Heads

Standard, Elegance

Output

0.45 ml

Bottle Sizes

15, 30, 50 ml

Applications

Skincare, makeup, lotions, creams, medium- to high-viscosity formulas



Sof Airless

Key Features

- SP343A airless engine
- Smooth actuation even the most viscous formulas
- Convenient and comfortable to use with a 360° application
- Flexible integration into your industrial process for atmospheric filling thanks to Purge ring.
- Possibility to snap on under vacuum condition
- Highly customizable

Closure Sizes

Snap on, M17-32

Output

0.13, 0.25 ml

Bottle Size

15, 20, 30, 40, 50 ml

Applications

Skincare, makeup

Dispensing Tubes



Amplify™

Key Features

- A cleaner, more hygienic experience through controlled dispensing
- Convenient, on-the-go use
- All-plastic, Pure Path™ airless pump for superior product protection
- High levels of evacuation (>96%)¹ for greater consumer value perception
- Soft force-to-actuate for greater consumer comfort and control

Diameters

25 mm (Europe), 30 mm (North America)

Output

0.45 ml

Applications

Skincare, hair care, makeup, lotions, creams, metal-sensitive and medium- to high-viscosity formulas

Tube Partners

North America: Plastube; Europe: Neopac



LX

Key Features

- Reliable pumps, widely tested & approved for all type of viscosity,
- POM-free pump
- Convenient: 360° application
- A solution easily customized

Closure Sizes

Snap on, M19-39

Output

0.50 ml

Diameters

Ø40 et 50 mm

Applications

Skincare, makeup, hair care



Nea

Key Features

- Outputs: 150 & 250µL
- Smoothest actuation even on the most viscous formulas
- Strong compatibility thanks to Pure Path technology & PBT body option
- Convenient: 360° application
- A solution easily customized

Closure Sizes

Snap on, M17-24, M17-32

Output

0.15, 0.25 ml

Diameters

Ø25 et 30mm (M17-24), Ø35 et 40mm (M17-32)

Applications

Skincare, makeup



SP3

Key Features

- Soft actuation and robust engine for a pleasant delivery
- Suited to dispense a wide variety of product viscosities
- Convenient: 360° application
- PBT body to enhance compatibility
- A solution easily customized

Closure Sizes

Snap on, M17-32, M19-21

Output

0.13, 0.23 ml

Diameters

Ø35 et 40mm (M17-32), Ø25 et 30mm (M19-21)

Applications

Skincare, makeup

Jars



Jars

Key Features

- Single wall 50 mil
- Custom Color options
- Up to 3 color silk screen
- Hot stamp capability

Material of Jar

- 50% PCR 50% VIRGIN
- PETG- Plastic
- Acrylic

Material of Lid

Aluminum

Location

USA

Lotion Atmospheric



Aria® & Prelude®

Key Features

- Low force-to-actuate and robust pump engine for smooth delivery
- Hygienic, wipe-away head design (Aria) for a cleaner experience
- Locking feature for portability and security
- Metal-free Pure Path™ engine for better formula protection
- High compatibility with complex formulas including SPF, silicone, retinol, salicylic acid and others
- Hot stamping, metallization and other decoration or customization available
- Global supply chain allows for greater flexibility and speed to market

Closure Sizes

Tapered: 18-400, 18-410², 18-415², 20-410

Straight: 18-400, 18-410², 20-400, 20-410

Stepped: 24-410³

Output

0.15, 0.23 ml

Applications

Skincare, makeup, metal-sensitive and high-viscosity formulas



Lyric®

Key Features

- Highly customizable engine design
- Three available head styles (Platinum, Whisper, Serenity)
- Fully metallic pump (Platinum) or metalized finishes (Whisper and Serenity)
- Metal-free Pure Path™ engine for better formula protection
- Special suck-back feature that keeps the orifice clean
- Soft force-to-actuate for greater consumer comfort and control

Closure Sizes

Straight: 18-400, 20-410

Output

0.15, 0.20 ml

Applications

Skincare, makeup, metal-sensitive and high-viscosity formulas



LX

Key Features

- More than 30 years of robust performance
- Widely tested and approved
- POM-free pump
- Different design and finish possibilities

Closure Sizes

Straight: 22-400, 22-410, 22-415, 24-400, 24-410, 24-415

Output

0.35, 0.5 ml

Applications

Skincare, hair care, personal care



MD150™

Key Features

- Soft actuation
- Low force-to-actuate
- High compatibility with aggressive formulations
- Perfect performance even with high viscosity
- Versatile in colors and shrouds

Closure Sizes

Smooth and ribbed: 18-415, 20-410, 22-415, 24-410

Output

0.15 ml

Applications

Body care, facial care, hair care, sun care, makeup



NEA

Key Features

- Pure Path™ engine for better formula protection
- Suitable with liquid and viscous formulas
- Ultra-smooth actuation for full range of viscosities
- PBT body option to enhance formula compatibility
- Extra formula protection available via self-sealing actuator
- Wide range of designs and finishes from plastic to metal
- Global supply chain for greater flexibility and speed to market

Closure Sizes

Straight: 18-400, 20-400, 20-410, 22-410

Stepped: 18-400, 20-410, 22-410, M17-24

Output

0.15, 0.25 ml

Applications

Skincare, makeup, hair care



PurePress®

Key Features

- Easy, one-hand, one-touch dispensing
- Integral cap with living hinge to ensure cleanliness
- Pure Path™ technology for metal-free fluid path to protect formulations

Closure Sizes

24-410

Output

0.50 ml

Applications

Facial cleansers, astringents, antiseptics, hair care, polish removers

Lotion Atmospheric (continued)



Rhapsody

Key Features

- Affordable and reliable
- Able to prime high-viscosity product
- Full Flow option for very high viscosities
- Large selection of smooth and ribbed closures
- Generous outputs, ideal for hair care and skincare
- Optional PP or Crystal cap

Closure Sizes

GL 20, 20-400, 20-410, 22-415, 24-410

Output

0.16, 0.21, 0.25, 0.30 ml

Applications

Skincare, low-dose hair care



Sinfonia® Crème

Key Features

- Available in a wide array of closure sizes, actuators and overcaps
- Wide range of finishes and aesthetics
- Different dimensions and outputs
- Sinfonia® SR: Superior Resistance engine for complex formulas (foundation, oil, biphasic)
- Fast response to customer requirements
- Soft version available

Closure Sizes

Ferrules, plastic closures, threaded ferrules, closures with overshell

Output

0.05, 0.07, 0.10, 0.13, 0.19 ml

Applications

Sun care, skincare, hair care, makeup



Sof Atmo

Key Features

- SP34D engine
- Smooth actuation even the most viscous formulas
- Highly customizable

Closure Sizes

Snap on, M17-32

Output

0.13, 0.23 ml

Bottle Sizes

25, 30, 40, 50, 60 ml

Applications

Skincare, makeup



Sonnet® & Sonata®

Key Features

- Comfortable force-to-actuate offers controlled feel during use
- Hygienic, wipe-away head design for a cleaner experience
- Lock-up actuator easily relocks for on-the-go convenience, eliminating need for overcap
- Able to handle highly viscous formulas
- Pure Path™ technology offers metal-free fluid path for better product protection
- Family look available with Aria® and Prelude® for brand consistency

Closure Sizes

Tapered: 22-400, 22-410, 24-410

Straight: 22-410, 24-410

Output

0.50 ml

Applications

Skincare, hair care, facial cleansers, metal-sensitive and high-viscosity formulas

SP3

Key Features

- Soft actuation and robust engine for refined delivery
- Suitable with liquid and viscous formulas
- PBT body option to enhance formula compatibility
- Widest choice of neck finishings and designs
- Widely tested and approved
- Global supply chain for greater flexibility and speed to market

Closure Sizes

Concave: 18-400

Straight: Europa 5, 18-400, 20-400, 20-410, 24-410

M17-21, FEA15, FEA17, FEA20

Stepped: 20-410, 22-410, 24-410

Output

0.08, 0.13, 0.23 ml

Applications

Skincare, makeup, hair care



¹ When tested in Silgan Dispensing labs with basic moisturizer.

² Closure sizes produced in Europe only; available for ordering globally.

³ Closure size produced in North America only; available for ordering globally.

Samplers & Minis



Mini NEA

Key Features

- Based on the NEA engine with Pure Path™ technology for better formula protection
- Ultra-smooth actuation even on the most viscous formulas
- Excellent evacuation rate
- High-end comfort
- Contemporary design that's fully customizable and part of a family look
- Compliant with Ecocert and Cosmos
- Atmospheric or airless versions available

Closure Sizes

17 mm

Output

0.15 ml

Bottle Sizes

5, 7.5, 10 ml

Applications

Skincare, makeup, personal care



Sofistic's

Key Features

- Travel-sized mini sprayer
- Same exceptional performance as a retail product
- Available in Lotion (SP24) and in Spray (SP22)

Closure Sizes

Snap-on

Output

0.08, 0.13 ml

Bottle Sizes

5, 10, 15 ml

Applications

Skincare, makeup, sun care

A photograph of a young woman with blonde hair tied back, smiling and applying a white cream to her left shoulder. The background is a soft-focus bathroom setting. The image is partially covered by a blue diagonal overlay.

Personal Care Dispensing Systems



Fine Mist Sprayers



Mark VI® & Spray Extender

Key Features

- Outstanding atomization and priming capabilities
- Easy-actuation head
- Wide range of spray pattern options

Closure Sizes

18-415, 20-410, 22-415, 24-410

Output

0.14 and 0.16 ml

Applications

Hair care, personal care, body care requiring fine mist or spray atomization; also suitable for food and car care products



Mark VII® Max & Spray Extender

Key Features

- Primes high-viscosity products
- Outstanding atomization and priming capabilities
- Contemporary aesthetics
- Inverted spraying option available
- Wide range of spray pattern options

Closure Sizes

Ribbed: GL20, 18-415, 20-400

Smooth or ribbed: 20-410, 22-415, 24-410

Snap: GS30, GS31

Ferrule: 20 mm

Output

0.16, 0.21, 0.30 ml; 0.18 ml for inverted

Applications

Skincare, sun care, hair care, body care, high-viscosity formulas



Mark VII® Max Style

Key Features

- Contemporary aesthetics
- Large actuator for better ergonomics
- Comfortable actuation with grip
- Optional PP cap
- Mark VII® Max technology inside

Closure Sizes

Screw: 24-410

Output

0.21 ml

Applications

Sun care, hair care, deodorant, baby care, body care



Mini-Trigger™ Curve

Key Features

- Secure, on-the-go portability via an integrated button lock
- Targeted spray
- Ideal for hairsprays, gels, sunscreens and body sprays
- Expanded range of outputs from 0.16 through 0.30 ml

Closure Sizes

20-410 or 24-410, smooth wall

Output

0.16 to 0.30 ml

Applications

Hair care, skincare, sun care, high-viscosity formulas



Sinfonia® Elegance & Sinfonia® Infinite

Key Features

- Distinct and versatile
- Available in a wide array of configurations
- Low minimum order quantities
- Sinfonia® SR: Superior Resistance engine for complex formulas (oil, biphas)
- Sinfonia® Elegance: noise-free and softer actuation
- Sinfonia® Infinite: long-lasting and voluminous mist

Closure Sizes

Crimp: 13, 15, 18, 20 mm

Screw: Europa 5 / 15-415, 18-400, 18-415, 20-410, 20-415, 22-410, 22-415, 24-410, 24-415, DIN18, CETIE 18

Snap: 20 mm

Output

0.05, 0.07, 0.10, 0.13, 0.19 ml

Applications

Sun care, skincare, hair care, makeup



SP22 & SP22 Panache Pulse

Key Features

- Luxurious and versatile
- Available in a wide array of configurations
- Low minimum order quantities
- SP22 SR: Superior Resistance engine for complex formulas (oil, biphas)
- SP22 Panache Pulse: luxurious spray ideal for face mist, with an ultra-airy and enveloping mist

Closure Sizes

Crimp: 13, 15, 17, 18, 20 mm

Screw: Europa 5 / 18-400, 20-400, 20-410, 22-410, 24-410

Ferrule: 1"

Output

0.08, 0.13 ml

Applications

Face mist, makeup fixer, body oil, hair oil, deodorant



Sprayette™ IV

Key Features

- Higher-output coarse mist sprayer
- Exceptional performance with aggressive formulas
- Wide range of spray pattern options
- Pure Path™ technology for a metal-free fluid pathway

Closure Sizes

24-410, 28-400, GS26

Output

0.35, 0.50, 0.70 ml

Applications

Hair care, air freshener, surface cleaning, surface disinfection, food



Mark IV®

Key Features

- Excellent atomization with several spray options
- Soft and consistent actuation
- Compatibility with challenging formulations
- Efficient in different viscosities
- Precise dosing

Closure Sizes

Smooth and ribbed: 18-415, 20-410, 22-415, 24-410

Output

0.15 ml

Applications

Hair care, facial care, body care



M300™

Key Features

- Enwrapping cloud
- Smooth and consistent actuation
- High compatibility with complex formulations
- Precise dosage

Closure Sizes

Smooth and ribbed: 18-410

Output

0.21 ml

Applications

Body care, facial care, hair care

Dispensers



D1™

Key Features

- Designed for high-output applications like shampoos, conditioners and body washes
- Water-shielding design stops water ingress and prevents bacteria growth
- High-output, high-profile
- Simple one-hand operation
- Special configurations allow lock-down (closed) shipping position
- Internal and external restrictor clips available to meet your desired output

Closure Sizes

33-400, 38-400, 43-400, 110-400, 63-400, 63-485, 70-400, 89-400

Output

7 to 30 ml

Applications

High-output soaps and lotions, food, hair products, complex or aggressive formulas



Harmony®

Key Features

- Different looks available with standard head and closure options
- Ideal for liquid soaps and lotions, metal-sensitive and high-viscosity formulas
- Lock-up or lock-down design
- Pure Path™ technology for a metal-free fluid path
- Extra protection for sensitive formulas

Closure Sizes

24-400 (ribbed only), 24-410, 24-415, 28-410, 28-415

Output

2 ml

Applications

Soaps, lotions, metal-sensitive and high-viscosity formulas



HVD™

Key Features

- Precise, powerful performance
- Easy bottom filling
- Ideal for oral care, hair creams, pastes and waxes
- Decoration available

Output

Up to 2.50 ml

Applications

Oral care, hair creams, pastes, waxes, high-viscosity formulas



P2000™

Key Features

- Different looks available with standard head and closure options
- Ideal for liquid soaps and lotions, metal-sensitive and high-viscosity formulas
- Lock-up design
- Pure Path™ technology for a metal-free fluid path
- Extra protection for sensitive formulas

Closure Sizes

24-410, 24-415, 28-410

Output

2 ml

Applications

Everything from creams and tonics to hair care products and liquid soaps



SD®20C

Key Features

- Intermediate output
- Advanced lock-down design
- Outstanding top-load support
- Wide variety of head designs
- Custom metal overshell available
- Range of options for packaging convenience and flexibility

Closure Sizes

24-410, 24-415, 28-400, 28-410, 28-415

Output

1.50, 2 ml

Applications

Body care, sun care, hair care, hand care, hand soap/sanitizer



SD®50

Key Features

- Primes high-viscosity fluids
- Patented metal-free Pure Path™ technology
- Low force-to-actuate and robust pump engine for smooth delivery
- Decoration options available

Closure Sizes

20-410, 20-415, 22-400, 22-410, 22-415, 24-400, 24-410, 24-415, 28-400, 28-410, 28-415

Output

0.50 ml

Applications

Creams, lotions, soaps, metal-sensitive and high-viscosity formulas



SD200®

Key Features

- Intermediate output
- Advanced lock-down design
- Outstanding top-load support
- Wide variety of head designs
- Custom metal overshell available
- Range of options for packaging convenience and flexibility

Closure Sizes

24-400 (ribbed only), 24-410, 24-415, 28-410, 28-415

Output

2 ml

Applications

Soaps, lotions, shampoos, conditioners



SD®400 & 800

Key Features

- Compatible with highly aggressive formulations
- Extremely low profiles require no special shelf heights when stacking
- All head styles and most configurations are available in lock-up (open) or lock-down (closed) positions
- Completely leak-proof dispensing system
- Restrictor clips available to meet your desired output
- Closures greater than 70mm available with off-center punch

Closure Sizes

28-400, 28-410, 33-400, 38-400, 89-400

Output

2 to 8 ml

Applications

High-output soaps and lotions, food, hair products, complex or aggressive formulas



ShowerGuard®

Key Features

- Easy, one-hand operation
- Designed for high-output applications like shampoos, conditioners and body washes
- Water-shielding design stops water ingress and prevents bacteria growth
- Modern, attractive profile

Closure Sizes

28-410, 28-415, 33-415, 38-400

Output

4 ml

Applications

High-output lotions and soaps, shampoos, conditioners, water-sensitive formulas





















Foam Dispensing Systems



Explore a world-class portfolio of foam pumps and bottles

There are many reasons consumers prefer foam dispensing in their beauty and personal care products. It clings well, is easy to spread, rinses completely and feels pleasant to touch. Not only that, foam is a more sustainable option, requiring 22%-100% less water than other solutions.¹

Bottles	F2		F3	G3					M3	WRM3	WRD4		
													
													
BOTTLE NAME	43C1		43D1	40O2	40O1	40C2	40O4	40T2	30C2	30C4	30C1	30C7	30C8
Available volumes in EU (ml)	100 / 125 / 150 / 200 / 250	-	150	-	250	150	-	-	50	-	-	-	-
Available volumes in US (ml)	100 / 125 / 150 / 210	210 / 250	-	150	-	180	210	250	50	125 / 150	50 / 75	250	200
Material	HDPE	PET	HDPE	HDPE					HDPE		PET		HDPE
Production method	EBM	IBM	EBM	EBM					EBM		IBM		EBM
Standard bottle color ²	White or Natural	Clear	White or Natural	White or Natural					White or Natural		Clear		White or Natural
Fixation system	Screw-on			Screw-on					Screw-on				

Overcap Options

PUMP	F2	F3	G3	M3
Standard transparent	Yes	Yes	Yes	Yes
Standard colored (translucent or opaque)	Yes	Yes	Yes	Yes
Standard frosted*	Yes	Yes	Yes	Yes
Standard frosted colored* (translucent or opaque)	Yes	Yes	Yes	Yes
Straight frosted*	Yes	No	No	No
Straight frosted colored* (translucent or opaque)	Yes	No	No	No

*EU production only for the frosted overcaps

Our broad portfolio of foam dispensers for facial care, hair care, body care and beyond gives you the flexibility to create a solution that delivers the elegant experience consumers desire while distinguishing your brand on the shelf.

WRT4 WRT6						EZ'R		
						100 ml	160 ml	200 ml ³
								
4001	40T2	40T3	40T4	40T5	40O3	O2		
250	-	-	550	250	-	100 / 160		
-	250	550	550	-	250	100 / 200		
HDPE					PET	PP		
EBM					IBM	EBM		
White or Natural					Clear	White		
Screw-on						Snap-on		

Decoration Options

	BOTTLE		BASE CAP		NOZZLE	
	EU	US	EU	US	EU	US
Custom color matching	Yes	Yes	Yes	Yes	Yes	Yes
Hot stamping⁴	Yes	No	Yes	Yes	No	Yes
Silkscreening⁴	Yes	No	No	No	No	No

¹ Source: 2011 internal research

² Custom color matching available

³ Available in US & Asia only

⁴ On demand: hot stamping and silkscreen possibilities depend on the bottle shape and the base cap type

⁵ All North American produced bottles are available in PCR and Bio-Based materials

Advanced dispensing solutions for the full spectrum of foam products

Our pumps and bottles are designed to deliver superior performance at home and on the go.

Pumps & Options

F2
(neck Ø43 mm)

F3

G3

(neck Ø40 mm)



HANDHELDS RANGE

Engine L11 / Output 0.75 ml

Engine L9 / Output 1.2 ml

Engine L7 / Output 1.5 ml

Sleeving service on the pump, available in Europe. Transparent, with tear strip, 50 µm.¹

Available with Velvet

M3 **WRM3** **WRD4**
(neck Ø30 mm)



TRAVEL SIZE RANGE

Engine S10 / Output 0.4 ml

Engine S6 / Output 0.6 ml

Sleeving service available on the M3 pump, in Europe. Transparent, with tear strip, 50 µm.¹

Available with Velvet

WRT4 **WRT6**
(neck Ø40 mm)



TABLETOPS RANGE

Engine L11 / Output 0.75 ml

Engine L9 / Output 1.2 ml

Engine L7 / Output 1.5 ml

Available with Velvet

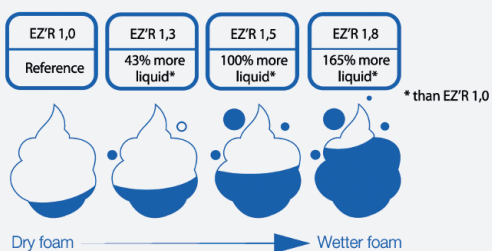
EZ'R

(neck Ø26 mm)



THE UNIQUE UPSIDE-DOWN SQUEEZE FOAMER

1 EZ'R foamer, 4 liquid outputs, a range of foam styles



NOZZLES

Available for F2, F3 and G3 (EU production only)



SATINY

- The must-have elegant design
- Soft surface for a delicate gesture
- New, higher overcap
- Mini version available for M3



FANCY

- The stylish design for on-shelf stand out
- New finger indent for intuitive gesture
- Suitable with all handheld overcaps

INTRODUCING VELVET

Velvet is an innovative new foam texture that delivers exceptional volume, density and smoothness through proprietary engine technology.



WITH VELVET



WITHOUT VELVET

¹ Sleeving service integrated during foam pump assembly on a single location: Silgan Dispensing (The Netherlands - Europe)

² Available in US & Asia only



Fragrance Dispensing Systems



Delight consumers with an enhanced fragrance dispensing experience

In a world of savvier consumers with higher expectations, Silgan Dispensing provides a variety of ways to reinforce brand cues, premiumize products and set your brand apart.

Our wide range of products deepens brand engagement across the consumer journey—from attracting consumers with samplers and minis to creating a luxurious experience with our fragrance pumps.

Trial



Market Penetration



Loyalty



Create a personalized dispensing experience with our broad portfolio

- **Extensive portfolio** answering to a wide variety of brand positioning needs
- **The Emotions of Spray Collection**, a wide array of sprays to support your product positioning while meeting consumer preferences—creating an emotional connection to your brand
- **Easy, accessible and swift solutions** for spray cap extensions, with versionable molds and automated assembly to allow for greater creative freedom in design
- **A comprehensive range of dip tubes**
- **Integrated decoration solutions** that give you more options for personalized design, including engraving and embossing, in-house laser marking, hot stamping and silk screening



Melodie®

Key Features

- Discrete, low-profile design for prestige fragrance packaging
- Soft actuation
- Pre-compression spray technology for optimal performance
- Wide range of customization, including the spray through the Emotions of Spray Collection
- Click-on pump available and delivered preassembled

Plastic Heads	13 PP, 14.5 PP
Metal Heads	11.8 E/11.8 EH, 13 E/13 EH, 15 E/15 EH
Inserts	Narrow, medium (STD 30 M), wide (4050-30 M)
Crimp-on Ferrules	13 mm (FEA, GPI), 15 mm (FEA, GPI), 17 mm (FEA), 18 mm (FEA, GPI), 20 mm (FEA)
Ferrule Heights	5 (FEA), 6.15 (GPI)
Clikit® Metal Collars	13 mm, 15 mm, 17 mm, 18 mm, bead option
Threaded Ferrules with Collar	GPI 18/410, Europa 4
Outputs	70 µl, 100 µl 30 µl (Melodie Touch®)
Customization	Customized extensions upon request



Melodie Pirouette®

Key Features

- Luxury for Eco-conscious consumers
- Refillable solution with reusable packaging elements
- Guaranteed manufacturing quality
- Cost-effective solution versus metal
- Compatible with several bottleneck sizes

Plastic Heads	13PP
Metal Heads	13E/EH
Plastic Threaded Ferrule with Collar	Europa 4, SNI 15, SNI 17
Outputs	70 µl, 100 µl, 30 µl (Melodie Touch®)



XD 11®

Key Features

- Discrete and ultra-compact sprayer
- Ideal for premiumization and differentiation
- Neutral engine for better compatibility and formula preservation
- POM-free option
- Wide range of customization options, including the Panache® spray

Plastic Heads	13 mm, 15 mm
Metal Heads	12 mm, 13 mm, 15 mm
Inserts	Standard, Maxi-Mist®, Panache®
Crimp-on Ferrules	13 mm (FEA), 15 mm (FEA, GPI), 17 mm (FEA), 18 mm (FEA), 20 mm (FEA)
Crimpless®	13 mm (FEA), 15 mm (FEA, GPI), 17 mm (FEA)
Threaded Ferrules	CV13, CV15, Europa 4
Outputs	70 µl, 100 µl
Customization	Customized extensions upon request



XD 11® Pirouette™

Key Features

- Sustainable solution for premium fragrance
- Allowing for refilling and recycling of the bottle
- Guaranteed manufacturing quality
- Cost-effective alternative versus metal
- Same external diameter as FEA 15 mm
- Available in travel size

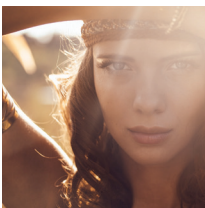
Metal Heads	12 mm, 13 mm
Plastic Threaded Ferrule with Collar	SNI 15
Outputs	70 µl, 100 µl

The Emotions of Spray Collection



Melodie Forever®

- Prolonged, fine atomization
- Controllable actuation
- Discrete, soft and constant
- Unique sound
- Airy, wrapping and voluminous



Melodie Mystery®

- Long and enveloping spray
- More refined, elegant and intimate feeling
- Precision and sensuality



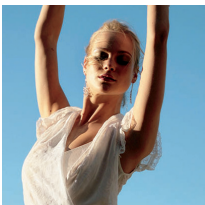
Melodie Agile®

- Solid and precise actuation
- Homogenous, focused, efficient
- Discrete sound
- Fine, powerful dispersion



Melodie Pure®

- Fine atomization
- Ideal for water-based formulations
- Small output to avoid excessive wet feeling
- Prolonged, soft spray
- Controllable actuation



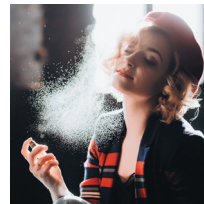
Melodie Delicate®

- Ultra-feminine
- Infinitely discrete and elegant
- Small and focused spray
- Soft and quiet



Maestro Extravagant®

- Exceptionally voluminous spray mist
- Long and sustained in the air
- Refreshing and airy
- Exuberant and indulging



XD 11° Panache®

- Very long and voluminous spray
- Sustained spray duration
- Extremely fine droplets for a dry and airy mist
- A world of purity, opulence and sensuality



Aspire®

Key Features

- Premium economy
- Low-profile, modern aesthetics
- Cost-effective solution
- Superior performance for target market
- Standard configuration for faster lead times

Plastic Heads	13 mm, 15 mm
Metal Heads	13 mm, 15 mm
Inserts	NN standard nebulization
Crimp-on	15 mm (FEA, GPI), 20 mm (FEA)
Clikit®	15 mm (FEA, GPI)
Outputs	100 µl, 130 µl



Aspire® Pirouette™

Key Features

- For Eco-conscious consumers
- Allowing for refilling and recycling of the bottle
- Guaranteed manufacturing quality
- Cost-effective solution

Plastic Head	13mm
Metal Head	13mm
Plastic Threaded Ferrule with Collar	SN115
Outputs	100 µl, 130 µl



LPP

Key Features

- Based on a solid and proven design
- Robust and reliable
- Superior spray quality through pre-compression technology
- High profile for massive packaging
- Gasket-free fastening technology for maximum compatibility with fragrance

Plastic Heads	12 mm, 13 mm, 15 mm
Metal Heads	12 mm, 13 mm, 15 mm
Crimp-on Ferrules	13 mm (FEA, GPI), 15 mm (FEA, GPI), 17 mm (FEA), 18 mm (FEA), 20 mm (FEA, GPI)
Crimpless®	13 mm (FEA, GPI), 15 mm (FEA, GPI), 17 mm (FEA), 18 mm (FEA), 20 mm (FEA, GPI)
Outputs	70 µl, 100 µl, 140 µl



Maestro®

Key Features

- Exceptionally smooth actuation
- Adaptable to most bottle designs
- Excellent compatibility for a wide range of formulas
- Features a pre-compression spray, ideal for spraycaps
- Additional voluminous spray options available with Maestro Extravagant®

Plastic Heads	13.2 PP, 15.15 PP, 15.15H PP, 18.35 PP
Metal Heads	11.8-E/11.8-EH, 13-E/13-EH, 15-E/15-EH, 19E
Inserts	Narrow, medium (STD 30 M), wide (4050-30 M)
Crimp-on Ferrules	13 mm, 15 mm, 17 mm, 18 mm, 20 mm
Threaded Ferrules	20-400 (GPI)
Tower Heights	5, 5.8
Outputs	70 µl, 100 µl 140 µl (Maestro® and Maestro Extravagant®)
Customization	Customized extensions upon request



Orchestra®

Key Features

- Low actuator height for a low-profile and compact design
- Highly versatile design with attractive solutions for many packaging requirements
- Available in a variety of sizes and options, from crimped to screw pump versions to metal, plastic and customized colors

Plastic Heads	ERLP 13, ERLP 15
Metal Heads	ERLP 13R, ERLP 15R, ERLP H13R
Inserts	NN standard nebulization, HN high nebulization
Crimp-on Ferrules	13 mm, 15 mm, 17 mm, 18 mm, 20 mm
Threaded Ferrules	LFV 180 (18-400), LFV EU4 (Europa 4)
Outputs	70 µl, 100 µl, 130 µl
Overcaps	Long Tri-cap 15-25



SLPP

- Discrete and compact design
- Robustness proven over more than 15 years of performance
- High spray quality and smooth actuation
- Gasket-free fastening technology for maximum compatibility with fragrance

13 mm, 15 mm
12 mm, 13 mm, 15 mm
13 mm (FEA, GPI), 15 mm (FEA, GPI), 17 mm (FEA)
13 mm (FEA, GPI), 15 mm (FEA, GPI), 17 mm (FEA)
Europa 4, 20-400 (GPI), 24-400 (GPI)
70 µl, 120 µl

Give consumers the opportunity to try your fragrance and take it on the go

Consumers appreciate the opportunity to try products before they purchase. Our broad portfolio of samplers, minis and travel-sized solutions allows you to build awareness and increase market penetration, while delivering an exceptional spray experience.

Samplers



Mini-Mist®

The cost-effective sampler

Key Features

- A simplified composition
- A lighter sampler
- Optimized cost per contact to reach a wider audience
- Same gesture as retail product featuring the highest quality of spray

Heads

XD10 Snap'In

Bottles

Plastic bottle 1 ml

Output

40 µl

Customization

- Standard colors: black, white and natural
- Any specific colors available on request
- Bottle standard decoration: silk screening, hot stamping



Sofix®

The sampler market reference

Key Features

- Only mini pump on the market designed to work with both plastic and glass bottles
- Same gesture as retail product featuring the highest quality of spray
- Crystalline and neutral pump

Heads

SP5K Snap'In with a universal collar and a Maxi-Mist® insert

Sofix® Bottles

Plastic bottle 1.2 ml

Glass bottle 1.5 ml

Sofix+ Bottles

Glass bottle 2 ml

Output

50 µl

Customization

- Standard colors: black, white and natural
- Any specific colors available on request
- Bottle standard decoration:
 - Plastic bottle: silk screening, hot stamping
 - Glass bottle: enamel, gold and platinum



Sofilux®

The versatile sampler

Key Features

- Chic and convenient
- Same gesture as retail product featuring the highest quality of spray
- Crystalline and neutral pump
- The beauty of glass with two different designs

Heads

SP5K Snap'In

Bottles

Glass bottle 1.5 ml Slim design = Ø 9.25 mm

Glass bottle 1.5 ml and 2 ml = Ø 11.25 mm

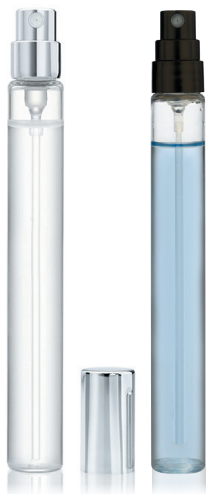
Output

50 µl

Customization

- Standard colors: black, white and natural
- Any specific colors available on request
- Bottle standard decoration: enamel, gold and platinum

Minis & Travel Size



Sofilux® Minis

The travel and discovery retail offer

Key Features

- For travel-sized product, discovery set offer or gift with purchase
- Sofilux Minis Plastic and Sofilux Minis Metal available
- The highest quality of spray for a luxury experience
- Crystalline and neutral pump

Sofilux Minis Plastic

SP5K Snap'In + added dip tube
Threaded plastic ferrule EU3 + plastic head

- Standard colors: black, white or natural
- Customization: available on request

Sofilux Minis Metal

SP5K Snap'In + added dip tube

- Standard colors: gold or silver
- Customization: anodization available on request

Output

50 µl

Bottles

Glass bottle 5 ml = Ø 14.25 mm Glass bottle 7.5 ml = Ø 14.25 mm
Glass bottle 10 ml = Ø 14.25 mm

- Bottle standard decoration: enamel, gold or platinum



Sofilux® Minis TCS

The mini pump & mini retail product

Key Features

- Same performance as a retail product in a miniature design
- Discrete, crystalline pump
- Excellent compatibility via our SP5K neutral engine

Metal Crimpless*

SP5K TCS = Ø 11 mm + Metal Head

Output

50 µl



XD 11® Pirouette™ & Melodie Pirouette®

Refillable on-the-go pack for vials

Key Features

- Eco-conscious product in a travel size
- Refillable solution with reusable packaging elements
- Guaranteed manufacturing quality
- Same high end spray experience and performance as on the retail pack
- Discreet luxury aesthetics — a low profile design with no visible engine
- Same external diameter as FEA 15 mm

Metal Heads

12 mm, 13 mm

Plastic Threaded Ferrule with Collar

SNI 15, SNI 13 (Melodie Pirouette only)

Outputs

30 µl (Melodie Touch Pirouette), 70 µl, 100 µl



Global Product Portfolio

Home & Garden Dispensing Solutions



Home & Garden Dispensing Solutions At a Glance

		VersaPlast®	SP05™	SP05™ PC/PC USD	TS-800®	Mixor® HP	Mixor® MP	Mixor® HP Remote	Mini-Trigger™ Curve	Vela™
Output		1.25 ml	1.25 ml	1.20 ml 1.25 ml	0.65ml 0.90 ml 1.30 ml	1.3 ml 1.6 ml	1.0 ml 1.3 ml	1.3 ml 1.6 ml	0.16 ml to 0.30 ml	1.30 ml
Closure	18-415									
	20-400									
	20-410								●	
	GL 20									
	22-415									
	24-410								●	
	GS 26									
	28-400	●	●	●	●	●	●			●
	28-400 non-removable	●	●	●	●	●	●			●
	28-400 RIC				●					
	28-410 US, 28-410 EU	●	●	●	●		●			●
	28x3 non-removable				●					
	28-414				●					
	PCO/BPF				●					
	28-415 ratchet									
	38-400							●		
	38-400 non-removable							●		
	38-415 ratchet									
Spray Pattern	Stream	●			●	●	●	●		●
	Spray	●	●	●	●	●	●	●	●	●
	Barrel Foamer	●	●	●	●	●	●	●		●
	Mesh Foamer/Door Foamer	●	●	●	●		●			
	Adjustable Nozzle									●
	Custom									
Options	Child Safety		●	●		●	●	●		●
	Bent Dip Tube	●	●	●	●	●	●			
	Security Clip				●					
	Upside-down			●				●		
	Labeling/Engraving				●	●	●	●		
	Hot Stamp				●					
	Tube Filter									●
Production Facility	Europe	●	●	●	●					●
	North America	●		●	●	●				
	Asia-Pacific				●		●	●	●	
	South America									

ErgoShield™	Maxi™ T/N	Aerohead® Plus	Mark VI®	Mark VII® Max	Sprayette™ IV	Hayes™ HP-2	Hayes™ HP-3	Mini-Turret™	SoloDex™	BOS® Enhanced
	2.5 ml 3.2 ml		0.14 ml 0.16 ml	0.16 ml 0.21 ml 0.30 ml	0.35 ml 0.50 ml 0.70 ml	9.5 l/min @ 3.4 bar	5.3 l/min @ 3.4 bar	5.3 l/min @ 3.4 bar	2.5 gallons/ min @ 50 psi	2-3 ml/sec
			•							
				•						
			•	•						
				•						
			•	•						
			•	•	•					
					•					
	•				•					
	•				•					
						•	•	•	•	
										•
										•
•	•	•	•	•	•	•	•	•		•
	•									
•	•	•								
								•		
									•	
				•						•
										•
	•									
•	•		•	•	•	•	•	•	•	
		•								•

Trigger Sprayers



VersaPlast®

Key Attributes

- 100% polyolefin design, certified recyclable*
- High chemical compatibility
- Ergonomic, easy-to-use design
- High-output trigger sprayer in a compact, medium profile
- Easy to fit into limited shelf height
- Unique aesthetic for shelf differentiation

**RecyClass Certified B Grade on PET bottles using Recyclability Design Compatibility criteria*

Applications

Home, garden, auto, laundry, air

Shrouds

Standard

Closure Sizes

28-400,
28-400 non-removable,
28-410

Nozzles

On/off spray, barrel foamer, mesh foamer, door foamer

Triggers

Ergo®

Output

1.20 ml



SP05™

Key Attributes

- All-plastic construction
- Ergonomic, easy-to-use design
- High-output trigger sprayer in a compact, medium profile
- Unique aesthetic for shelf differentiation
- Child-resistant (CR) feature available
- High chemical compatibility
- Easy to fit into limited shelf height
- European production allows for speed to market

Applications

Home, garden, auto, laundry, air, professional

Closure Sizes

28-400,
28-400 non-removable,
28-410

Nozzles

On/off spray, barrel foamer, mesh foamer, door foamer

Output

1.25 ml



SP05™ PC/PC USD

Key Attributes

- Pre-compression engine with fine mist spray pattern for even coverage
- Integrated upside-down option for 360° coverage of hard-to-reach surfaces
- Multiple foamer options for diverse applications
- Ergonomic, easy-to-use design
- High-output trigger sprayer in a compact, medium profile
- Child-resistant (CR) feature available
- High chemical compatibility
- European production for increased speed to market

Applications

Home, garden, auto, laundry, air

Closure Sizes

28-400,
28-400 non-removable,
28-410

Nozzles

On/off sprayer, barrel foamer, welded mesh foamer, barrel foamer

Output

1.25 ml (SP05 PC),
1.20 ml (SP05 PC USD)

Trigger Sprayers (continued)



TS-800®

- Trusted by major global brands
- Proven reliability and performance
- Customizable nozzles, shrouds, closures and triggers
- Reliable venting system

Home, garden, auto, laundry, air
Standard, Ergo®, Ergo® 1.3, Ergo® Plus,
TS-800® Arc, TS-800® Contorno

28-400, 28-400 ABO (anti back off),
28-400 non-removable, 28-400 RIC,
28-410 US, 28-410 EU, 28x3 non-removable,
28-414, PCO/BPF

Spray, spray/stream, barrel foamer, mesh
foamer, door foamer (spray/foam), fine mist

Standard, bi-colored actuator (EU),
bi-colored soft touch, 3-finger actuator (US)

0.65, 0.90, 1.30 ml



Mixor® HP & Mixor® MP

Key Attributes

- High-output performance
- High chemical compatibility
- Easy to actuate
- Reliable venting system
- Ergonomic, easy-to-use design
- Child-resistant (CR) feature available

Applications

Home, garden, auto, laundry, air, professional

Shrouds

Closure Sizes

Nozzles

Output

Mixor® HP

28-400, 28-400 non-removable

Spray, spray/stream, barrel foamer, foamer attachment

1.3, 1.6 ml

Mixor® MP

28-400, 28-400 ABO, 28-410 ABO, 28-400 non-removable

Spray, spray/stream, barrel foamer, foamer attachment

1.0, 1.3 ml



Mixor® HP Remote

Key Attributes

- High-output performance
- High chemical compatibility
- Ergonomic, easy-to-use design
- Remote trigger allows for more comfortable dispensing with larger containers and for longer distances
- 360° functionality
- Child-resistant (CR) feature available

Applications

Garden, auto, laundry, professional

Shrouds

Mixor® Remote, Mixor® Nested Remote

Closure Sizes

Snap adapt closure (38-400 or 38-400 non-removable) + connector, 38-400 closure + weighted tube end

Nozzles

Spray, spray/stream, barrel foamer

Output

1.3, 1.6 ml

Trigger Sprayers (continued)



Mini-Trigger™ Curve

Key Attributes

- Enhanced shelf presence
- Integrated button lock
- Ergonomic, easy-to-use design
- Suitable for medium- to high-viscosity gels and creams

Applications

Home, garden, auto, laundry, air

Closure Sizes

20-410 or 24-410

Output

0.16 to 0.30 ml

Professional Trigger Sprayers



Vela™

Key Attributes

- Versatile applications—consumer to industrial
- High chemical compatibility
- Ergonomic, easy-to-use design
- Wide, textured, easy-to-grip trigger
- Shipper sprayer
- Adjustable nozzle
- Fitted dip tube filter comes standard
- Child-resistant (CR) feature available

Applications

Home, garden, auto, laundry, air, professional, industrial

Shrouds

Standard

Closure Sizes

28-400,
28-400 non-removable,
28-410

Nozzles

Adjustable, foamer

Output

1.30 ml

Regular Sprayers



Mark VI® & Mark VII® Max

Key Attributes

Mark VI®

- Outstanding atomization and priming capabilities
- Highly cost-effective
- Easy-actuation head
- Built for 55% VOC formulations
- Wide range of spray pattern options

Mark VII® Max

- Primes high-viscosity products
- Outstanding atomization and priming capabilities
- Contemporary aesthetics
- Rounded or flat hood available
- 360° spraying option available
- Wide range of spray pattern options

Applications

Home, garden, auto, laundry, air

Closure Sizes

Mark VI®

18-415*
20-410**
22-415**
24-410**

Mark VII® Max

20-400*
20-410**
GL 20*
22-415**
24-410**

Output

0.14, 0.16 ml

0.16, 0.18***,
0.21, 0.30 ml

Spray Patterns

Narrow, medium,
wide

Narrow, medium,
wide, extra wide

Options

Inverted spraying,
metal overshell

**Ribbed version available*

***Smooth or ribbed version available*

****Inverted and GS only*



Sprayette™ IV

Key Attributes

- Higher-output coarse mist sprayer
- Exceptional performance with aggressive formulas
- Wide range of spray pattern options
- Pure Path™ technology for a metal-free fluid pathway

Applications

Home, garden, auto, laundry, professional

Closure Sizes

24-410, GS 26, 28-400

Spray Patterns

Extra narrow, narrow, wide

Output

0.35, 0.50, 0.70 ml

Aerosols



Aerohead® Plus

Key Attributes

- Produced in Europe for faster lead times
- Available in PCR
- Ergonomic, easy-to-use design
- Unique aesthetic for shelf differentiation
- Low force to actuate that may help reduce finger fatigue
- Directional spray enhances user control

Applications

Auto, home, laundry, garden, professional, paint

Technical Requirements

Can size: 207.51/211
Valve stem: male

Spray Patterns

Narrow, medium, wide, stream, custom

Trigger Design

Track, customizable

Not available for air care applications



ErgoShield™

Key Attributes

- Modern design that differentiates and blends with can packaging
- Optimized ergonomics that yields a natural index finger deviation
- Compatible with both DSC 205 and 211 can sizes
- High spray capabilities
- E-Commerce ISTA-6A compliant

Applications

Surface care, air care, insect repellent, automotive, personal care, professional, paint, laundry

Technical Requirements

Can sizes: 205 (58 mm), 211 (66 mm)
Valve stem: male

Spray Patterns

Multiple spray pattern options

Hose End Sprayers



Hayes™ HP-2 & Hayes™ HP-3

Key Attributes

- Proven quality and performance
- Designed for large-scale applications
- Ready-to-use, single-valve operation
- Variety of preset mix ratios available
- Quick connect unit available

Applications

Garden, auto, professional

Closure Sizes

HP-2
28-415
ratchet

Output Options

Flat fan
spray

Output Rates

9.5 liter/min
@ 3.4 bar

Mix Ratios

20:1 to 200:1

HP-3
28-415
ratchet

Stream or
fan spray
(water-only
feature)

5.3 liter/min
@ 3.4 bar

6:1 to 50:1



Mini-Turret™

Key Attributes

- Proven quality and performance
- Designed for large-scale applications
- Ready-to-use, single-valve operation
- Variety of preset mix ratios available
- Child-resistant (CR) feature available
- Quick connect unit available (EU standard)

Applications

Garden, auto, professional, outdoor

Closure Sizes

28-415 ratchet

Spray Patterns

stream or fan spray
(optional water-only feature)

Output Rate

5.3 liter/min @ 3.4 bar

Mix Ratio

15:1 to 200:1



SoloDex™

Key Attributes

- One-handed use
- Optimized ergonomics
- Proven air gap technology
- Dispersed via a fan pattern for maximum coverage
- Minimal part count
- Seamless connection to maximize grip area
- Finger indentations for secure grip

Applications

Lawn, garden

Closure Sizes

28-415 ratchet

Spray Patterns

fan spray

Output Rate

2.5 gallons/min @ 50 PSI

Mix Ratio

20:1 to 280:1

Sustained Duration Sprayers



BOS® Enhanced

Key Features

- Narrow-aiming nozzle for better line of sight and accuracy
- Four unique spray patterns to meet a variety of applications
- Proprietary holster design that allows storage in two different orientations
- Weighted handle, back-textured hand guide and two-finger trigger for easy ergonomics
- Powerful spray performance with a four-battery gear pump
- Foaming nozzle option available

Applications

Auto, professional

Closure Sizes

Snap adapt closure 1.0
(38-400 removable
or 38-415 non-removable)

Nozzles

Spray/stream, foaming

Output

2 to 3 ml per second

Options

Holder

Not currently available for garden applications in North America



Healthcare Dispensing Systems



Solutions for High Regulated Markets



Gemini™ BE Nasal Pump

Key Features

- Re-engineered spray adapter with control parameters and reliable engine
- High speed to the market
- Clean room, pharma-grade and ISO production
- High dosing accuracy
- Low strokes to prime
- Capability to match existing RLD devices across a range of formulations
- More than 40 different orifice configurations for Rx line of pumps
- Ability to modify spray characteristics like DSD, plume geometry and spray pattern

Closure Sizes

Screw (GL 18, GL 18 short, 18-410, 18-415, 20-400, GL 20—grooved & smooth, 22-415, pp 18S)
Ferrule (20 mm), Snap (S 20, GS 20)

Color Options

Color options available for Nasal hoods and Finger pads

Outputs

0.050ml to 0.180ml



Iridya® (Preservative-free)

Key Features

- Preservative-free, multidose eye dropper
- Familiar squeeze-bottle dropper design
- Consumer-preferred design validated by qualitative testing
- Elongated tip for ease of use and precision
- Laser welded safety seal for security
- Tamper-evident tear-off strip
- Overcap for prolonged use and on-the-go lifestyles
- Low squeeze force
- Controlled application for exact dosing
- Compatible with most market formulations, from low to high viscosities
- Delivery system for both over-the-counter and prescription drugs
- Designed and challenge-tested for preservative-free formulations
- Drug Master File (DMF #34286)

Bottle Sizes and Makes

5 ml, 10 ml

White and transparent bottles available

Senior-friendly material for low bottle squeeze force

Color Options

Isle Hood, AT Hood

Diverse colors on request

Outputs

25 to 45 µl, depending on formulation

Custom outputs available



Mark II™

Key Features

- Excellent atomization capabilities with great performance and quality
- All pharma-grade materials comply with European and U.S. regulations
- Standard white color; other colors available upon request
- Available with shipping clip for various sizes and outputs
- Available with protective hood for nasal adapters in custom colors
- Drug Master File (DMF #12223)

Closure Sizes

Many standard closure sizes

Output Range

0.100 to 0.200 ml



MK™

Key Features

- Outstanding performance and dose accuracy
- Accurate priming for OTC or Rx formulations
- All pharma-grade materials comply with European and U.S. regulations
- Compliant with the U.S. FDA nasal guidelines
- Standard white color; other colors available upon request
- Available with shipping clip for various sizes and outputs
- Available with protective hood for nasal adapters in custom colors
- Drug Master File (DMF #12223)

Closure Sizes

Many standard closure sizes

Output Range

0.050 to 0.180 ml



Monodose

Key Features

- Improved ergonomics compared to competitors' devices
- Optimized one-handed actuation
- 360° use for delivery in any position
- Ready-to-use primeless activation
- Ease of use for nonmedically trained individuals
- Microbiological integrity of the primary container

Color Options

Color options available for adapter and vial holder

Outputs

~100µl Depending on the vial and fill volume



PFP N™ (Preservative-free)

Key Features

- Full protection from microbiological contamination
- No silver spring, no oligodynamic components
- Shut-off valve to avoid contamination
- Sterile air filter system for bottle venting; non-venting version also available
- Entire pump can be sterilized via gamma irradiation
- Finger flange and hood can be easily customized
- Standard white color, with clear and custom colors available
- All pharma-grade materials comply with European and U.S. regulations
- Extensive reference list
- Drug Master File (DMF #23054)

Closure Sizes

Snap-on closure S20

Output Range

0.050 to 0.140 ml with customized intermediary outputs

High-output Dispensers



SD200®

Key Features

- Intermediate output
- Advanced lock-down design
- Outstanding top-load support
- Wide variety of head designs
- Range of options for packaging convenience and flexibility

Closure Sizes

Ribbed: 24-400

Smooth or ribbed: 24-410, 24-415, 28-410, 28-415

Outputs

2.0 ml



Sprayette™ IV

Key Features

- Pure Path™ technology for a metal-free fluid pathway
- Highly customizable with variety of output sizes and protective hoods
- Higher-output large mist sprayer
- Exceptional performance with aggressive formulas
- Wide range of spray pattern options
- High discharge volume for oral and topical applications

Closure Sizes

24-410, 28-400, Snap-on S26

Output Range

0.350 to 0.700 ml

Other Spray Solutions



HiMark®

Key Features

- Versatile product range with many options for outputs, closures and adapters
- Easily customized with numerous aesthetic options
- Topical, oral and nasal options available
- Dose counter and safety clip options available
- Suitable for non-drip nasal sprays and other viscous formulations
- Wide output range with many options
- For aggressive products, alternative materials can be provided for critical pump components
- Child-resistant option available
- Drug Master File (DMF #28564)

Closure Sizes

Many standard closure sizes

Output Range

0.050 to 0.190 ml



Mark VII® Max

Key Features

- Compatible with most high-viscosity formulations
- Spray and cream versions with excellent priming and smooth actuation
- Natural gasket for invisibility in translucent closures
- Variety of closures, heads, hoods and orifice cups for maximum flexibility and compatibility across platforms and product lines
- Inverted version available for upside-down spraying
- Drug Master File (DMF #22653)

Closure Sizes

- Ribbed: GL 20, 20-400
- Smooth or ribbed: 20-410, 22-415, 24-410
- Snap-on: GS 30, GS 31
- Ferrule: 20 mm

Outputs

- 0.160, 0.210, 0.300 ml, 0.180 ml for inverted version

Foamers



Silgan Foamer Range

Key Features

- Propellant-free foamers
- Handheld, table-top or squeeze gesture
- Easy to actuate
- Broad customization options
- Complementary bottles with decoration options

Closure Sizes

30 mm, 40 mm, 43 mm

Output Range

0.4 to 1.5 ml

Triggers



TS800®

Key Features

- Proven reliability and performance
- More than 30 spray-stream-foam nozzle configurations
- Multiple shrouds, closures and actuators
- Reliable venting system
- High chemical compatibility

Closure Sizes

Many standard closure sizes

Outputs

0.65 ml, 0.90 ml, 1.30 ml

Airless Systems



Silgan Airless Range

Key Features

- Full range of airless packaging to dispense semi-solid formulas
- Protection against formula oxidation
- High restitution rate
- 360° dispensing
- Broad range of pump engines and complementary airless bottles or tubes

Bottle Volume

5 to 200 ml

Output Range

0.080 ml to 2.5 ml

Adapters

Nasal Applications



Round



Square



Oval



Mini



Ear Adapter



Shroud



Hexagon



Elegant

Oral Applications



Throat Adapter Short



Throat Adapter Medium



Throat Adapter
Medium + Protection



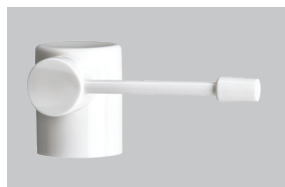
MTA5¹



Spray Extender²



Throat Adapter Long



Throat Adapter Articulated³



ATA 19



SATA Narrow

Topical Applications



Dispensing Head



Spray Head 16 mm



Spray Head with Capillary Tube⁴



Spray Head 16 mm

Ophthalmic Applications

All adapters fit on Mark II and MK with the below exceptions:

¹ MTA5 fits on HiMark

² Spray extender fits on Mark VII Max

³ Throat adapter articulated-F on ferrule only

⁴ Spray head on capillary tube on special request only

[Additional nasal, oral, topical and ear adapters available through partners](#)



Dispensing Closures





A better fit, a better experience

At Silgan Dispensing, we pride ourselves on creating state-of-the-art packaging solutions for the world's most admired brands. Together, our insight, expertise, ingenuity and agility provide our customers and theirs with a better dispensing experience.

Whether you are in the market for a standard or fully customized closure, we will collaborate closely with you on a solution that delivers superior performance, outstanding differentiation and seamless production. And, because we offer many customization capabilities in-house, we're able to create sophisticated closures that fit your needs without compromising speed-to-market.

If you're looking to deepen your understanding of consumer preference, improve product performance and serve up a fresher, safer and more convenient dispensing experience—we're here to help.



Standard Dispensing Closures

Spouts

Spouted and Applicator

- Pinpoint directional dispensing
- Dual color capability
- Orifice sizes from dropper to large rectangle
- Lining capability
- Child-resistant options available
- Friction fit and threaded
- Custom and stock
- Popular sizes for bottles, tubes and cans
- Ideal for chemical, automotive, household products and more



Polycam

Snap-Action and One-Piece Closures

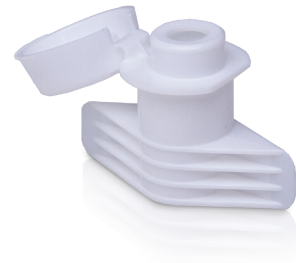
- Innovative designs for bottles, tubes and tittles
- Attractive smooth wall and serrated style
- Custom and stock
- Logo insert capability
- Lining capability
- Ergonomic thumb lifts
- Easy open/easy close
- Non-protruding hinges
- Clog-resistant orifices
- Friction fit and threaded
- Orifice sizes 1.5 mm (0.060") to 18.5 mm (0.728")



FlexFit™

One-Piece, Flip-Top Pouch Fitment

- Convenient, single-piece closure
- Quick and easy-to-use flip top
- Latch back feature allows for mess-free dispensing
- Less material than similar closures on the market
- Orifice sizes: 8.6 mm round, 6 mm round and 4x8.6 mm ribbon
- Suitable for food and non-food applications

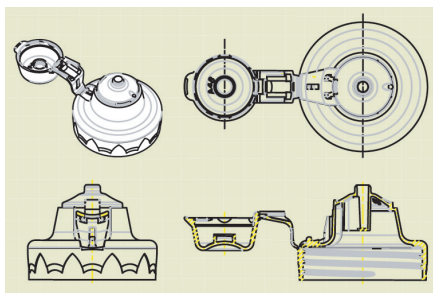


Custom Dispensing Closures

Silgan Dispensing will assist you in bringing your ideas from concept to completion.

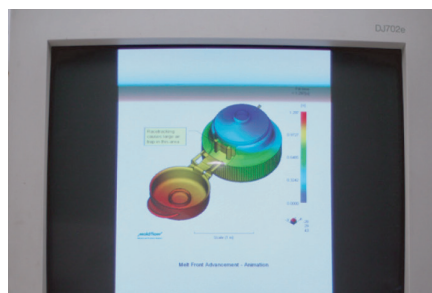
Design phase

- Industrial design
- 3D concept renderings
- SLA presentation models



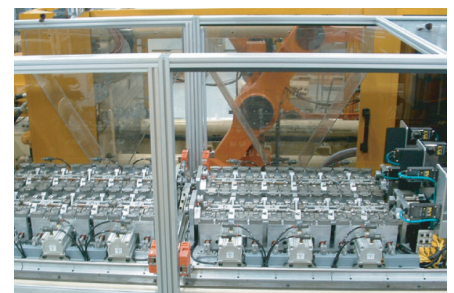
Engineering phase

- Mold filling analysis
- Finite element analysis
- Prototype molded samples



Production phase

- High-volume turnkey systems
- Robotic automation
- 100% vision inspection



Spouted 28 mm



PS254

Size/Finish
28/400

Emboss
No

Seal Type
Land

Orifice Sizes
3 mm x 6 mm,
3 mm, 2.5 mm,
2 mm, 1 mm

Lining
Yes



PS255

Size/Finish
28/400

Emboss
No

Seal Type
Combination

Orifice Sizes
3 mm, 1.5 mm

Lining
No



PS256

Size/Finish
28/400

Emboss
No

Seal Type
Land

Orifice Sizes
3 mm, 1.5 mm

Lining
Yes



PS121

Size/Finish
28/410

Emboss
No

Seal Type
Land

Orifice Sizes
3 mm, 2.5 mm,
2 mm, 1 mm

Lining
No



PS134

Size/Finish
28/410

Emboss
No

Seal Type
Land

Orifice Sizes
3 mm x 6 mm,
3 mm x 4.5 mm,
3 mm,
2.5 mm, 2 mm,
1 mm

Lining
No



PS168

Size/Finish
28/410

Emboss
No

Seal Type
Valve

Orifice Sizes
3 mm, 2.5 mm,
2 mm, 1 mm

Lining
No



PS218

Size/Finish
28/410

Emboss
No

Seal Type
Combination

Orifice Sizes
3 mm, 2.5 mm,
2 mm, 1 mm

Lining
No



PS187

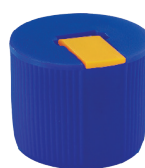
Size/Finish
28/410

Emboss
No

Seal Type
Valve

Orifice Sizes
3 mm x 6 mm,
3 mm x 4.5 mm,
3 mm, 2.5 mm,
2 mm, 1 mm

Lining
No



PS259

Size/Finish
28/410

Emboss
No

Seal Type
Liner

Orifice Sizes
3 mm x 6 mm,
3 mm x 4.5 mm,
3 mm, 2.5 mm,
2 mm, 1 mm

Lining
Yes



PS326

Size/Finish
28/410

Emboss
No

Seal Type
Land

Orifice Sizes
3 mm x 6 mm,
3 mm x 4.5 mm,
3 mm, 2.5 mm,
2 mm, 1 mm

Lining
Yes



PS352

Size/Finish
28/410

Emboss
No

Seal Type
Arc

Orifice Sizes
3 mm x 6 mm,
3 mm x 4.5 mm,
3 mm, 2.5 mm,
2 mm, 1 mm

Lining
Yes



PS398

Size/Finish
28/410

Emboss
No

Seal Type
Plug

Orifice Sizes
3 mm x 6 mm,
3 mm x 4.5 mm,
3 mm, 2.5 mm,
2 mm, 1 mm

Lining
No

Spouted 24 mm



PS110

Size/Finish	Emboss
24/410	No
Seal Type	Orifice Sizes
Combination	3 mm, 2.5 mm, 1 mm
Lining	
No	



PS146

Size/Finish	Emboss
24/410	No
Seal Type	Orifice Sizes
Land	3 mm, 2.5 mm, 1 mm
Lining	
No	



PS147

Size/Finish	Emboss
24/410	No
Seal Type	Orifice Sizes
Valve	3 mm, 2.5 mm, 1 mm
Lining	
No	



PS258

Size/Finish	Emboss
24/410	No
Seal Type	Orifice Sizes
Land	3 mm x 6 mm, 3 mm x 4.5 mm, 3 mm, 2.5 mm, 2 mm, 1 mm
Lining	
Yes	



PS202

Size/Finish	Emboss
24/410	No
Seal Type	Orifice Sizes
Land	4 mm, 3 mm, 2.5 mm, 2 mm, 1 mm, 4 Hole Spray
Lining	
Yes	

Spouted 20 mm



PS115

Size/Finish	Emboss
20/410	No
Seal Type	Orifice Sizes
Land	3 mm, 2.5 mm, 2 mm, 1 mm
Lining	
No	



PS149

Size/Finish	Emboss
20/410	No
Seal Type	Orifice Sizes
Valve	3 mm, 2.5 mm, 2 mm, 1 mm
Lining	
No	



PS249

Size/Finish	Emboss
20/410	No
Seal Type	Orifice Sizes
Valve	3 mm, 2.5 mm, 2 mm, 1 mm
Lining	
No	

Polycam Smooth Walled



PS356

Size/Finish	Emboss
24/410	No
Seal Type	Orifice Sizes
Arc	6 mm, 4.75 mm, 3 mm, 1.5 mm
Lining	
Yes	



PS357

Size/Finish	Emboss
24/415	No
Seal Type	Orifice Sizes
Arc	6 mm, 4.75 mm, 3 mm, 1.5 mm
Lining	
No	



PS370

Size/Finish	Emboss
28/410	Yes
Seal Type	Orifice Sizes
Arc	6 mm, 4.75 mm, 3 mm, 1.5 mm
Lining	
Yes	



PS371

Size/Finish	Emboss
28/415	Yes
Seal Type	Orifice Sizes
Arc	6 mm, 4.75 mm, 3 mm, 1.5 mm
Lining	
No	



PS433

Size/Finish	Emboss
28/410	Yes
Seal Type	Orifice Sizes
Arc	6 mm, 4.75 mm, 3 mm, 1.5 mm
Lining	
Yes	

Polycam Inverted



PS408

Size/Finish	Emboss
33/400	No
Seal Type	Orifice Sizes
Arc	4 mm Enhanced Flow Dispense
Lining	
Yes	



PS412

Size/Finish	Emboss
33/400	No
Seal Type	Orifice Sizes
Liner	6 mm Baffled Flow Dispense
Lining	
Yes	



PS413

Size/Finish	Emboss
33/400	No
Seal Type	Orifice Sizes
Liner	4.75 mm x 19 mm Ribbon
Lining	
Yes	



PS407

Size/Finish	Emboss
38/400	No
Seal Type	Orifice Sizes
Arc	4 mm Enhanced Flow Dispense
Lining	
Yes	



PS409

Size/Finish	Emboss
38/400	No
Seal Type	Orifice Sizes
Arc	9.5 mm Flow Through Dispense
Lining	
Yes	



PS410

Size/Finish	Emboss
38/400	No
Seal Type	Orifice Sizes
Arc	6 mm Baffled Flow Dispense
Lining	
Yes	



PS414

Size/Finish	Emboss
38/400	No
Seal Type	Orifice Sizes
Liner	4.75 mm x 19 mm Ribbon
Lining	
Yes	



PS420

Size/Finish	Emboss
38/400	No
Seal Type	Orifice Sizes
Liner	18.5 mm Flow Through Dispense
Lining	
Yes	

Polycam Serrated/Food Closures



PS416

Size/Finish
38/400

Seal Type
Arc

Lining
Yes

Emboss
Yes

Orifice Sizes
7.6 mm Baffled
Flow Dispense



PS423

Size/Finish
38/400

Seal Type
Liner

Lining
Yes

Emboss
Yes

Orifice Sizes
Teardrop
w/ Pour Lip



PS368

Size/Finish
38/400

Seal Type
Liner

Lining
Yes

Emboss
Yes

Orifice Sizes
12.7 mm, 9.5 mm,
6 mm, 4 mm



PS381

Size/Finish
38/400

Seal Type
Arc

Lining
Yes

Emboss
Yes

Orifice Sizes
5 mm x 24.5 mm
Ribbon



PS385

Size/Finish
38/400

Seal Type
Liner

Lining
Yes

Emboss
Yes

Orifice Sizes
5 mm x 24.5 mm
Ribbon



PS386

Size/Finish
38/400

Seal Type
Arc

Lining
Yes

Emboss
Yes

Orifice Sizes
9.5 mm, 6 mm



PS354

Size/Finish
33/400

Seal Type
Liner

Lining
Yes

Emboss
No

Orifice Sizes
6 mm, 3 mm



PS439

Size/Finish
38/400

Seal Type
Liner

Lining
Yes

Emboss
Yes

Orifice Sizes
7.6 mm Baffled
Flow Dispense



PS405

Size/Finish
33/400

Seal Type
Flexible Arc

Lining
Yes

Emboss
No

Orifice Sizes
6 mm Keyhole



PS446

Size/Finish
38/400

Seal Type
Liner

Lining
Yes

Emboss
Yes

Orifice Sizes
Silicone Valve

Tube Closures



PS391

Size/Finish 1.375" M8	Emboss Yes
Seal Type "V"	Orifice Sizes 6 mm, 4.75 mm, 3 mm, 1.5 mm
Lining Yes	



PS441

Size/Finish 1.375" M8 Matte	Emboss Yes
Seal Type "V"	Orifice Sizes 6 mm, 4.75 mm, 3 mm, 1.5 mm
Lining Yes	



PS369

Size/Finish 2" Oval Snap On	Emboss No
Seal Type Plug	Orifice Sizes 5 mm
Lining No	



PS418

Size/Finish 1.5" 22/400	Emboss Yes
Seal Type "V"	Orifice Sizes 9.5 mm, 6 mm, 4.75 mm, 3 mm
Lining Yes	



PS442

Size/Finish 1.5" 22/400 Matte	Emboss No
Seal Type "V"	Orifice Sizes 9.5 mm, 6 mm, 4.75 mm, 3 mm
Lining Yes	



PS392

Size/Finish 2" 22/400 Snap On	Emboss Yes
Seal Type Plug	Orifice Sizes 6 mm, 4.75 mm, 3 mm
Lining No	



PS419

Size/Finish 2" 22/400	Emboss Yes
Seal Type "V"	Orifice Sizes 9.5 mm, 6 mm, 4.75 mm, 3 mm, 1.5 mm
Lining Yes	



PS406

Size/Finish 2" 22/400	Emboss No
Seal Type "V"	Orifice Sizes 9.5 mm, 6 mm, 4.75 mm, 3 mm
Lining Yes	



PS415

Size/Finish 2" 22/400	Emboss Yes
Seal Type "V"	Orifice Sizes 9.5 mm, 6 mm, 4.75 mm, 3 mm
Lining Yes	



PS425

Size/Finish 2" 22/400 Matte	Emboss Yes
Seal Type "V"	Orifice Sizes 9.5 mm, 6 mm, 4.75 mm, 3 mm
Lining Yes	



PS444

Size/Finish 1.5" 22/400 Matte	Emboss Yes
Seal Type "V"	Orifice Sizes 9.5 mm, 6 mm, 4.75 mm, 3 mm
Lining Yes	



PS445

Size/Finish 1.5" 22/400	Emboss Yes
Seal Type "V"	Orifice Sizes 9.5 mm, 6 mm, 4.75 mm, 3 mm
Lining Yes	

Unique/Double Walled



PS424

Size/Finish	Emboss
Pouch Fitment	No
Seal Type	Orifice Sizes
N/A	6 mm
Lining	
Yes	



PS429

Size/Finish	Emboss
Pouch Fitment	No
Seal Type	Orifice Sizes
N/A	8.6 mm
Lining	
Yes	



PS430

Size/Finish	Emboss
Pouch Fitment	No
Seal Type	Orifice Sizes
N/A	4 mm x 8.6 mm Ribbon
Lining	
Yes	



PS436

Size/Finish	Emboss
43 mm SpH	Yes
Seal Type	Orifice Sizes
Plug	19.5 mm
Lining	
No	



PS426

Size/Finish	Lining
38 mm SpH CR (Ratchet)	Yes
Seal Type	Emboss
Liner	No



PS428

Size/Finish	Lining
38 mm SpH CR (Non-Ratchet)	Yes
Seal Type	Emboss
Liner	No



PS443

Size/Finish	Emboss
28/410	No
Seal Type	Orifice Sizes
Modified "V"	4.75 mm
Lining	
No	

Friction Fit & Child-Resistant/ Applicator Caps



PS417

Size/Finish	Emboss
33/400	No
Seal Type	Orifice Sizes
Valve	3.8 mm
Lining	
No	



PS211

Size/Finish	Emboss
28/410 CR	No
Seal Type	Orifice Sizes
Valve	2 mm x 2 mm, 4 mm, 3 mm, 2 mm
Lining	
No	

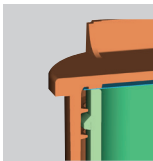


PS186

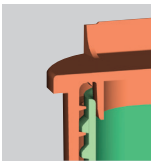
Size/Finish	Emboss
5/8" FF, CR	No
Seal Type	Orifice Sizes
Valve	0.8 mm
Lining	
No	

CR caps may be included in child-resistant applications when appropriately tested and certified using your completed package.

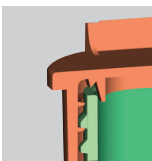
Seal Types



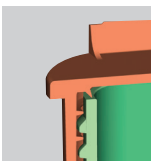
Flat/Liner Seal



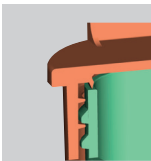
Plug Seal



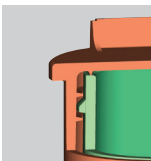
Combination Land and Valve Seal



Arc Seal

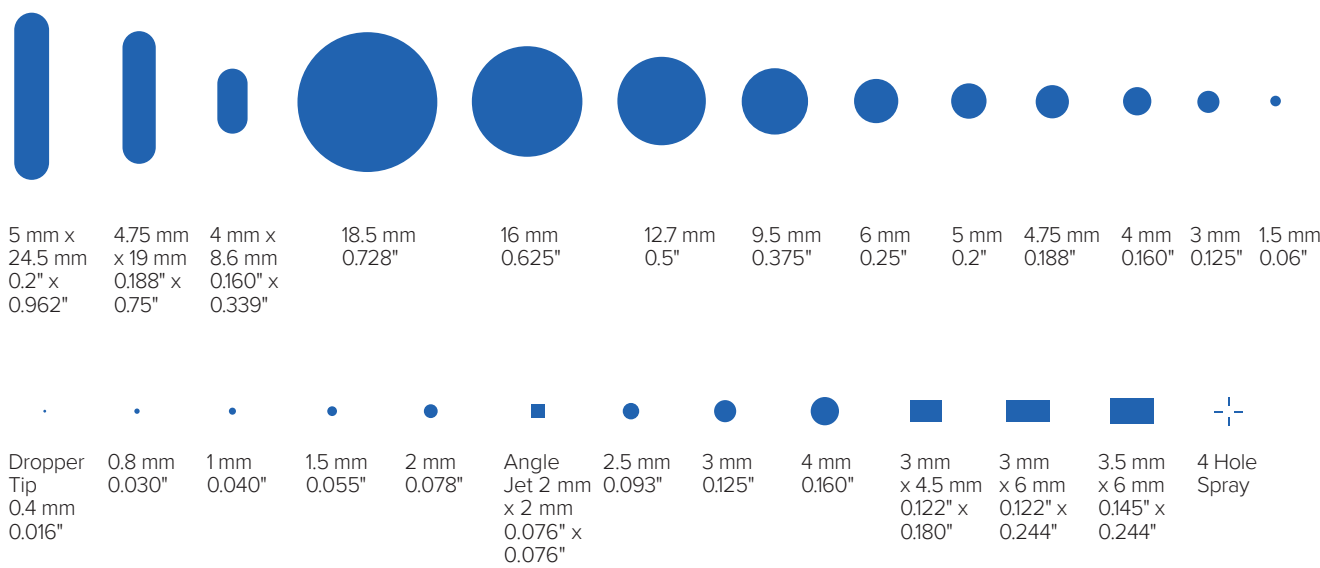


Valve Seal



"V" Seal

Orifice Sizes



Grow your sustainability story with our PCR portfolio

Silgan Dispensing is your partner in solving sustainability challenges through a broad portfolio of products featuring post-consumer recycled (PCR) plastic.

For more information, including the latest offerings from our color expansion, please contact your Silgan Dispensing sales representative.





Elevating the experience worldwide

With our responsive global network and team, you get a partner that's committed to delivering better experiences that move your brand and business forward.

silgandispensing.com/our-locations