



Global Product Portfolio

Healthcare Dispensing Systems



Adapters

Nasal Applications



Round



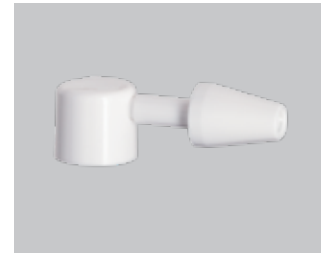
Square



Oval



Mini



Ear Adapter



Shroud



Hexagon



Elegant

Oral Applications



Throat Adapter Short



Throat Adapter Medium



Throat Adapter
Medium + Protection



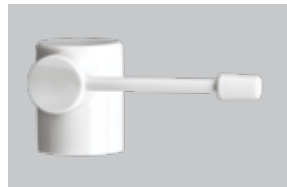
MTA5¹



Spray Extender²



Throat Adapter Long



Throat Adapter Articulated³



ATA 19



SATA Narrow

Topical Applications



Dispensing Head



Spray Head 16 mm



Spray Head with Capillary Tube⁴



Spray Head 16 mm

Ophthalmic Applications

All adapters fit on Mark II and MK with the below exceptions:

¹ MTA5 fits on HiMark

² Spray extender fits on Mark VII Max

³ Throat adapter articulated-F on ferrule only

⁴ Spray head on capillary tube on special request only

Additional nasal, oral, topical and ear adapters available through partners

Solutions for High Regulated Markets



Gemini™ BE Nasal Pump

Key Features

- Re-engineered spray adapter with control parameters and reliable engine
- High speed to the market
- Clean room, pharma-grade and ISO production
- High dosing accuracy
- Low strokes to prime
- Capability to match existing RLD devices across a range of formulations
- More than 40 different orifice configurations for Rx line of pumps
- Ability to modify spray characteristics like DSD, plume geometry and spray pattern

Closure Sizes

Screw (GL 18, GL 18 short, 18-410, 18-415, 20-400, GL 20—grooved & smooth, 22-415, pp 18S)
Ferrule (20 mm), Snap (S 20, GS 20)

Color Options

Color options available for Nasal hoods and Finger pads

Outputs

0.050ml to 0.180ml



Iridya® (Preservative-free)

Key Features

- Preservative-free, multidose eye dropper
- Familiar squeeze-bottle dropper design
- Consumer-preferred design validated by qualitative testing
- Elongated tip for ease of use and precision
- Laser welded safety seal for security
- Tamper-evident tear-off strip
- Overcap for prolonged use and on-the-go lifestyles
- Low squeeze force
- Controlled application for exact dosing
- Compatible with most market formulations, from low to high viscosities
- Delivery system for both over-the-counter and prescription drugs
- Designed and challenge-tested for preservative-free formulations
- Drug Master File (DMF #34286)

Bottle Sizes and Makes

5 ml, 10 ml

White and transparent bottles available

Senior-friendly material for low bottle squeeze force

Color Options

Isle Hood, AT Hood

Diverse colors on request

Outputs

25 to 45 µl, depending on formulation

Custom outputs available



Mark II™

Key Features

- Excellent atomization capabilities with great performance and quality
- All pharma-grade materials comply with European and U.S. regulations
- Standard white color; other colors available upon request
- Available with shipping clip for various sizes and outputs
- Available with protective hood for nasal adapters in custom colors
- Drug Master File (DMF #12223)

Closure Sizes

Many standard closure sizes

Output Range

0.100 to 0.200 ml



MK™

Key Features

- Outstanding performance and dose accuracy
- Accurate priming for OTC or Rx formulations
- All pharma-grade materials comply with European and U.S. regulations
- Compliant with the U.S. FDA nasal guidelines
- Standard white color; other colors available upon request
- Available with shipping clip for various sizes and outputs
- Available with protective hood for nasal adapters in custom colors
- Drug Master File (DMF #12223)

Closure Sizes

Many standard closure sizes

Output Range

0.050 to 0.180 ml



Monodose

Key Features

- Improved ergonomics compared to competitors' devices
- Optimized one-handed actuation
- 360° use for delivery in any position
- Ready-to-use primeless activation
- Ease of use for nonmedically trained individuals
- Microbiological integrity of the primary container

Color Options

Color options available for adapter and vial holder

Outputs

~100µl Depending on the vial and fill volume



PFP N™ (Preservative-free)

Key Features

- Full protection from microbiological contamination
- No silver spring, no oligodynamic components
- Shut-off valve to avoid contamination
- Sterile air filter system for bottle venting; non-venting version also available
- Entire pump can be sterilized via gamma irradiation
- Finger flange and hood can be easily customized
- Standard white color, with clear and custom colors available
- All pharma-grade materials comply with European and U.S. regulations
- Extensive reference list
- Drug Master File (DMF #23054)

Closure Sizes

Snap-on closure S20

Output Range

0.050 to 0.140 ml with customized intermediary outputs

High-output Dispensers



SD200®

Key Features

- Intermediate output
- Advanced lock-down design
- Outstanding top-load support
- Wide variety of head designs
- Range of options for packaging convenience and flexibility

Closure Sizes

Ribbed: 24-400

Smooth or ribbed: 24-410, 24-415, 28-410, 28-415

Outputs

2.0 ml



Sprayette™ IV

Key Features

- Pure Path™ technology for a metal-free fluid pathway
- Highly customizable with variety of output sizes and protective hoods
- Higher-output large mist sprayer
- Exceptional performance with aggressive formulas
- Wide range of spray pattern options
- High discharge volume for oral and topical applications

Closure Sizes

24-410, 28-400, Snap-on S26

Output Range

0.350 to 0.700 ml

Other Spray Solutions



HiMark®

Key Features

- Versatile product range with many options for outputs, closures and adapters
- Easily customized with numerous aesthetic options
- Topical, oral and nasal options available
- Dose counter and safety clip options available
- Suitable for non-drip nasal sprays and other viscous formulations
- Wide output range with many options
- For aggressive products, alternative materials can be provided for critical pump components
- Child-resistant option available
- Drug Master File (DMF #28564)

Closure Sizes

Many standard closure sizes

Output Range

0.050 to 0.190 ml



Mark VII® Max

Key Features

- Compatible with most high-viscosity formulations
- Spray and cream versions with excellent priming and smooth actuation
- Natural gasket for invisibility in translucent closures
- Variety of closures, heads, hoods and orifice cups for maximum flexibility and compatibility across platforms and product lines
- Inverted version available for upside-down spraying
- Drug Master File (DMF #22653)
-

Closure Sizes

- Ribbed: GL 20, 20-400
- Smooth or ribbed: 20-410, 22-415, 24-410
- Snap-on: GS 30, GS 31
- Ferrule: 20 mm
-

Outputs

- 0.160, 0.210, 0.300 ml, 0.180 ml for inverted version

Foamers



Silgan Foamer Range

Key Features

- Propellant-free foamers
- Handheld, table-top or squeeze gesture
- Easy to actuate
- Broad customization options
- Complementary bottles with decoration options

Closure Sizes

30 mm, 40 mm, 43 mm

Output Range

0.4 to 1.5 ml

Triggers



TS800®

Key Features

- Proven reliability and performance
- More than 30 spray-stream-foam nozzle configurations
- Multiple shrouds, closures and actuators
- Reliable venting system
- High chemical compatibility

Closure Sizes

Many standard closure sizes

Outputs

0.65 ml, 0.90 ml, 1.30 ml

Airless Systems



Silgan Airless Range

Key Features

- Full range of airless packaging to dispense semi-solid formulas
- Protection against formula oxidation
- High restitution rate
- 360° dispensing
- Broad range of pump engines and complementary airless bottles or tubes

Bottle Volume

5 to 200 ml

Output Range

0.080 ml to 2.5 ml



Elevating the experience worldwide

With our responsive global network and team, you get a partner that's committed to delivering better experiences that move your brand and business forward.

silgandispensing.com/our-locations