



Global Product Portfolio
Cross-Market
Catalog



Elevate the Dispensing Experience

Silgan Dispensing is your packaging partner for the new marketplace, delivering the insight, expertise, ingenuity and agility you need to create a better experience. Our broad portfolio and tailored approach allow us to offer solutions that solve your specific challenges while still meeting the high expectations of your customers.

Table of Contents

- 1** Beauty Dispensing Systems
- 9** Personal Care Dispensing Systems
- 20** Foam Dispensing Systems
- 24** Fragrance Dispensing Systems
- 37** Home & Garden Dispensing Systems
- 45** Healthcare Dispensing Systems
- 51** Dispensing Closures



Beauty Dispensing Systems



Airless Systems



DNA 32

Key Features

- Protection of the most sensitive formulas with NEA®, a neutral engine using our Pure Path™ technology
- Extra-smooth actuation even with the most viscous formulas
- Convenient and comfortable to use with a 360° application
- Flexible integration into your industrial process
- Highly customizable

Closure Sizes

Snap-on 32 mm

Output

0.25 ml

Bottle Sizes

15, 20, 30, 40, 50 ml

Applications

Skincare, makeup



DNA 35

Key Features

- Protection of the most sensitive formulas with NEA®, a neutral engine using our Pure Path™ technology
- Extra-smooth actuation even with the most viscous formulas
- Convenient and comfortable to use with a 360° application
- Flexible integration into your industrial process
- Highly customizable

Closure Sizes

Snap-on 35 mm

Output

0.25 ml

Bottle Sizes

30, 40, 50 ml

Applications

Skincare, makeup



Lyric® Airless

Key Features

- Ideal for high-viscosity formulation thanks to disk valve engine
- Excellent strokes-to-prime
- Soft force-to-actuate for greater consumer experience
- Slim bottle OD, easy to customize to double-wall structure
- Metal-free Pure Path™ engine for better formula protection

Closure Sizes

Straight snap-on closure

Output

0.15, 0.20 ml

Applications

Skincare, makeup, high-viscosity formulas



* ISTA-6A
Third Party Amazon
Testing Lab Certified

Pearl® 2

Key Features

- Enhanced sustainability with elimination of non-recyclable materials
- High single material concentration: 92% PP and 8% PE
- Superior protection against oxidation, enabling preservative-free, natural ingredients
- ~ 95% evacuation rate
- High compatibility across formulations and viscosities
- Broad decoration and color options
- E-commerce certified*
- Vacuum tested for leak-free, on-the-go travel

Closure Sizes

48 mm

Output

1 ml

Bottle Sizes

50, 75, 100 ml

Applications

Creams, gels, lotions



Pearl® Airless

Key Features

- Extremely low force-to-actuate
- All-plastic system for clean, metal-free dispensing
- Excellent evacuation rate
- Fewer strokes-to-prime and less re-priming issues during use
- Low part count and light weight for additional supply chain benefits
- Rolling Bellow Technology™ provides comfortable, consistent dispensing
- Wide-mouth, top-fill design offers optimal filling parameters
- Fully customizable
- Pearl Baby Bear head available

Closure Sizes

48 mm

Heads

Standard, Baby Bear

Output

1 ml

Bottle Sizes

50, 100, 150, 200 ml

Applications

Skincare, body care, hair care, personal care, lotions, medium- to high-viscosity formulas



Pearl® Mini Airless

Key Features

- Extremely low force-to-actuate
- All-plastic system for clean, metal-free dispensing
- Excellent evacuation rate
- Fewer strokes-to-prime and less re-priming issues during use
- Low part count and light weight for additional supply chain benefits
- Rolling Bellow Technology™ provides comfortable, consistent dispensing
- Wide-mouth, top-fill design offers optimal filling parameters
- Fully customizable

Closure Sizes

32 mm

Heads

Standard, Elegance

Output

0.45 ml

Bottle Sizes

15, 30, 50 ml

Applications

Skincare, makeup, lotions, creams, medium- to high-viscosity formulas



Sof'Airless®

Key Features

- SP343A airless engine
- Smooth actuation even the most viscous formulas
- Convenient and comfortable to use with a 360° application
- Flexible integration into your industrial process for atmospheric filling thanks to Purge ring.
- Possibility to snap on under vacuum condition
- Highly customizable

Closure Sizes

Snap on, M17-32

Output

0.13, 0.23 ml

Bottle Size

15, 20, 30, 40, 50 ml

Applications

Skincare, makeup

Airless Dispensing Tubes



Amplify™

Key Features

- A cleaner, more hygienic experience through controlled dispensing
- Convenient, on-the-go use
- All-plastic, Pure Path™ airless pump for superior product protection
- High levels of evacuation (>96%)¹ for greater consumer value perception
- Soft force-to-actuate for greater consumer comfort and control

Diameters

25 mm (Europe), 30 mm (North America)

Output

0.45 ml

Applications

Skincare, hair care, makeup, lotions, creams, metal-sensitive and medium- to high-viscosity formulas



ERA™

Key Features

- Enhanced sustainability
- 100% polyolefin pump – 95% PE/5% PP
- Minimum 95% Evacuation rate, superior protection against oxidation, enabling preservative-free, natural ingredients
- High performance dispensing
- Outstanding soft actuation
- Compact & versatile engine
- Designed for E-commerce

Closure Sizes

M17-32

Output

0.25 ml

Diameters

Ø35 et 40mm

Applications

Skincare, suncare, makeup, haircare



LX

Key Features

- Reliable pumps, widely tested & approved for all type of viscosity,
- POM-free pump
- Convenient: 360° application
- A solution easily customized

Closure Sizes

Snap on, M19-39

Output

0.50 ml

Diameters

Ø40 et 50 mm

Applications

Skincare, makeup, hair care



NEA®

Key Features

- Outputs: 150 & 250µL
- Smoothest actuation even on the most viscous formulas
- Strong compatibility thanks to Pure Path technology & PBT body option
- Convenient: 360° application
- A solution easily customized

Closure Sizes

Snap on, M17-24, M17-32

Output

0.15, 0.25 ml

Diameters

Ø25 et 30mm (M17-24), Ø35 et 40mm (M17-32)

Applications

Skincare, makeup



SP3

Key Features

- Soft actuation and robust engine for a pleasant delivery
- Suited to dispense a wide variety of product viscosities
- Convenient: 360° application
- PBT body to enhance compatibility
- A solution easily customized

Closure Sizes

Snap on, M17-32, M19-21

Output

0.13, 0.23 ml

Diameters

Ø35 et 40mm (M17-32), Ø25 et 30mm (M19-21)

Applications

Skincare, makeup

Lotion Atmospheric



Aria® & Prelude®

Key Features

- Low force-to-actuate and robust pump engine for smooth delivery
- Hygienic, wipe-away head design (Aria) for a cleaner experience
- Locking feature for portability and security
- Metal-free Pure Path™ engine for better formula protection
- High compatibility with complex formulas including SPF, silicone, retinol, salicylic acid and others
- Hot stamping, metallization and other decoration or customization available
- Global supply chain allows for greater flexibility and speed to market

Closure Sizes

Tapered: 18-400, 18-410², 18-415², 20-410

Straight: 18-400, 18-410², 20-400, 20-410

Stepped: 24-410³

Output

0.15, 0.23 ml

Applications

Skincare, makeup, metal-sensitive and high-viscosity formulas



LX

Key Features

- Widely tested and approved
- POM-free pump
- Different design and finish possibilities

Closure Sizes

Straight: 22-400, 22-410, 22-415, 24-400, 24-410, 24-415

Output

0.35, 0.5 ml

Applications

Skincare, hair care, personal care



Lyric®

Key Features

- Highly customizable engine design
- Three available head styles (Platinum, Whisper, Serenity)
- Fully metallic pump (Platinum) or metalized finishes (Whisper and Serenity)
- Metal-free Pure Path™ engine for better formula protection
- Special suck-back feature that keeps the orifice clean
- Soft force-to-actuate for greater consumer comfort and control

Closure Sizes

Straight: 18-400, 20-410

Output

0.15, 0.20 ml

Applications

Skincare, makeup, metal-sensitive and high-viscosity formulas



MD150™

Key Features

- Soft actuation
- Low force-to-actuate
- High compatibility with aggressive formulations
- Perfect performance even with high viscosity
- Versatile in colors and shrouds

Closure Sizes

Smooth and ribbed: 18-415, 20-410, 22-415, 24-410

Output

0.15 ml

Applications

Body care, facial care, hair care, sun care, makeup



NEA®

Key Features

- Pure Path™ engine for better formula protection
- Suitable with liquid and viscous formulas
- Ultra-smooth actuation for full range of viscosities
- PBT body option to enhance formula compatibility
- Extra formula protection available via self-sealing actuator
- Wide range of designs and finishes from plastic to metal
- Global supply chain for greater flexibility and speed to market

Closure Sizes

Straight: 18-400, 20-400, 20-410, 22-410

Stepped: 18-400, 20-410, 22-410, M17-24

Output

0.15, 0.25 ml

Applications

Skincare, makeup, hair care



PurePress®

Key Features

- Easy, one-hand, one-touch dispensing
- Integral cap with living hinge to ensure cleanliness
- Pure Path™ technology for metal-free fluid path to protect formulations

Closure Sizes

24-410

Output

0.50 ml

Applications

Facial cleansers, astringents, antiseptics, hair care, polish removers

Lotion Atmospheric (continued)



Rhapsody®

Key Features

- Affordable and reliable
- Able to prime high-viscosity product
- Full Flow option for very high viscosities
- Large selection of smooth and ribbed closures
- Generous outputs, ideal for hair care and skincare
- Optional PP or Crystal cap

Closure Sizes

GL 20, 20-400, 20-410, 22-415, 24-410

Output

0.16, 0.21, 0.25, 0.30 ml

Applications

Skincare, low-dose hair care



SD® 50

Key Features

- Metal variant suitable for sensitive formulas, from low to high viscosity
- Compatible with a wide range of viscosities
- Hygienic “clean wipe-away” actuator design
- Decoration options available: smooth, ribbed or metal finish

Closure Sizes

20-410, 20-415, 22-400, 22-410, 22-415, 24-400, 24-410, 24-415, 28-400, 28-410, 28-415

Output

0.50 ml

Applications

Oils, creams, hair care, face wash, hand wash



Sinfonia® Crème

Key Features

- Available in a wide array of closure sizes, actuators and overcaps
- Wide range of finishes and aesthetics
- Different dimensions and outputs
- Sinfonia® SR: Superior Resistance engine for complex formulas (foundation, oil, biphasic)
- Fast response to customer requirements
- Soft version available

Closure Sizes

Ferrules, plastic closures, threaded ferrules, closures with overshell

Output

0.05, 0.07, 0.10, 0.13, 0.19 ml

Applications

Sun care, skincare, hair care, makeup



Sof Atmo

Key Features

- SP34D engine
- Smooth actuation even the most viscous formulas
- Highly customizable

Closure Sizes

Snap on, M17-32

Output

0.13, 0.23 ml

Bottle Sizes

25, 30, 40, 50, 60 ml

Applications

Skincare, makeup



Sonnet® & Sonata®

Key Features

- Comfortable force-to-actuate offers controlled feel during use
- Hygienic, wipe-away head design for a cleaner experience
- Lock-up actuator easily relocks for on-the-go convenience, eliminating need for overcap
- Able to handle highly viscous formulas
- Pure Path™ technology offers metal-free fluid path for better product protection
- Family look available with Aria® and Prelude® for brand consistency

Closure Sizes

Tapered: 22-400, 22-410, 24-410

Straight: 22-410, 24-410

Output

0.50 ml

Applications

Skincare, hair care, facial cleansers, metal-sensitive and high-viscosity formulas



SP3

Key Features

- Soft actuation and robust engine for refined delivery
- Suitable with liquid and viscous formulas
- PBT body option to enhance formula compatibility
- Widest choice of neck finishings and designs
- Widely tested and approved
- Global supply chain for greater flexibility and speed to market
- POM free
- Available in airless format

Closure Sizes

Straight: Europa 5, 18-400, 20-400, 20-410, 24-410

M17-21, M19-21, FEA15, FEA17, FEA18, FEA20

Stepped: 20-410, 22-410, 24-410

Output

0.13, 0.23 ml

0.08, 0.18 ml available upon request

Applications

Skincare, makeup, hair care

¹ When tested in Silgan Dispensing labs with basic moisturizer.

² Closure sizes produced in Europe only; available for ordering globally.

³ Closure size produced in North America only; available for ordering globally.

Samplers & Minis



Mini NEA®

Key Features

- Based on the NEA engine with Pure Path™ technology for better formula protection
- Ultra-smooth actuation even on the most viscous formulas
- Excellent evacuation rate
- High-end comfort
- Contemporary design that's fully customizable and part of a family look
- Atmospheric available

Closure Sizes

17 mm

Output

0.15 ml

Bottle Sizes

5, 7.5, 10 ml

Applications

Skincare, makeup, personal care



Sofistic's®

Key Features

- Travel-sized mini sprayer
- Same exceptional performance as a retail product
- Available in Lotion (SP24) and in Spray (SP22)

Closure Sizes

Snap-on

Output

0.08, 0.13 ml

Bottle Sizes

10, 15 ml

Applications

Skincare, makeup, sun care





Personal Care Dispensing Systems



The Art of Spray Collection

Elevate the consumer experience with Silgan Dispensing's portfolio of micro-droplet spray technologies—designed to deliver an ultra-fine, enveloping mist that enhances every beauty ritual. Our unique range of customizable solutions allows brands to tailor the spray performance to their product needs, offering a dry-touch, delicate application ideal for skincare and beauty formulas. The micro-droplet spray reveals the full sensorial qualities of your product while ensuring a long-lasting, gentle application that leaves skin feeling refreshed and pampered.



Panache Pulse

Key Features

- Delicate mist
- Ultimate mist experience for direct application on face
- Optional luxury metal finish

| | |
|----------------------|--|
| Orifice | Narrow, Medium, Wide |
| Engine | SP22 |
| Closure Sizes | Crimp: 13, 15, 17, 18, 20 mm Screw: Europa 5, 18-400, 20-400, 20-410, 22-410, 24-410 Ferrule: 1" |
| Output | 0.08, 0.13 ml |
| Applications | Face mist, makeup, premium deodorant |

Romantica

Key Features

- Enveloping mist
- Soft actuation
- Matte finish for elevated experience

| | |
|----------------------|--|
| Orifice | Medium, Extra Wide |
| Engine | Mark VI |
| Closure Sizes | Screw: 20-410, 24-410 |
| Output | 0.10 ml - 0.13 ml |
| Applications | Face mist, body mist, deodorant, hair mist |



Infinite

Key Features

- Long-lasting spray experience
- Versatile mist for multiple applications
- Customized sprayer: multiple output, closures and finishes

| | |
|----------------------|--|
| Orifice | Medium |
| Engine | Sinfonia, Sinfonia Elegance |
| Closure Sizes | Crimp: 13, 15, 18, 20 mm Screw: Europa 5 / 15-415, 18-400, 20-410, 20-415, 22-410, 22-415, 24-410, 24-415, DIN18, CETIE 18 Snap: 20 mm |
| Output | 0.05, 0.07, 0.10, 0.13, 0.19 ml |
| Applications | Body mist, deodorant, face mist, hair mist, air freshener |

Blossom

Key Features

- Propellant-free large output
- Very long-lasting spray experience
- Optional inverted feature: spray upside-down

| | |
|----------------------|--|
| Orifice | Medium, Extra Wide |
| Engine | Mark VII Max |
| Closure Sizes | Screw Ribbed: GL20, 18-415, 20-400 Screw Smooth or Ribbed: 20-410, 22-415, 24-410 Snap: GS30, GS31 |
| Output | Standard: 0.16, 0.21, 0.30 ml Inverted: 0.18 ml |
| Applications | Deodorant, body mist, hair mist, face mist, air freshener |

Fine Mist Sprayers



Mark IV®

Key Features

- Excellent atomization with several spray options
- Soft and consistent actuation
- Compatibility with challenging formulations
- Efficient in different viscosities
- Precise dosing

Closure Sizes

Smooth and ribbed: 18-415, 20-410, 22-415, 24-410

Output

0.15 ml

Applications

Hair care, facial care, body care, body mist



Mark VI®

Key Features

- Outstanding atomization and priming capabilities
- Easy-actuation head
- Wide range of spray pattern options
- Spray extender option for targeted application

Closure Sizes

18-415, 20-410, 22-415, 24-410

Output

0.14 and 0.16 ml

Applications

Hair care, personal care, body mist, body care requiring fine mist or spray atomization; also suitable for food and car care products



Mark VII® Max & Mark VII® Max Blossom

Key Features

- Primes high-viscosity products
- Outstanding atomization and priming capabilities
- Contemporary aesthetics
- Inverted spraying option available
- Wide range of spray pattern options
- Spray extender option for targeted application
- Blossom: propellant-free, ultra-fine mist sprayer

Closure Sizes

Ribbed: GL20, 18-415, 20-400

Smooth or ribbed: 20-410, 22-415, 24-410

Snap: GS30, GS31

Ferrule: 20 mm

Output

0.16, 0.21, 0.30 ml; 0.18 ml for inverted

Applications

Hair mist, body mist, body care, sun care, skin care, insect repellent, disinfectant, high viscosity formulas



Mark VII® Max Style

Key Features

- Contemporary aesthetics
- Large actuator for better ergonomics
- Comfortable actuation with grip
- Optional PP cap
- Mark VII® Max technology inside

Closure Sizes

Screw: 24-410

Output

0.21 ml

Applications

Sun care, hair care, deodorant, baby care, body care



Mini-Trigger™ Curve

Key Features

- Secure, on-the-go portability via an integrated button lock
- Targeted spray
- Ideal for hairsprays, gels, sunscreens and body sprays
- Expanded range of outputs from 0.16 through 0.30 ml

Closure Sizes

20-410 or 24-410, smooth wall

Output

0.16 to 0.30 ml

Applications

Hair care, skincare, sun care, high-viscosity formulas



Romantica

Key Features

- Based upon Silgan Fine Mist Engine Technology
- A more premium experience with an extended, voluminous spray
- Soft actuation with Blossom mist
- Matte finish for an elevated experience

Closure Sizes

Screw: 20-410, 24-410 smooth

Output

0.10 ml - 0.13 ml

Applications

Make-up setting spray, body mist, hair mist, eye glass cleaner



Sinfonia® & Sinfonia® Elegance

Key Features

- Distinct and versatile
- Available in a wide array of configurations
- Low minimum order quantities
- Sinfonia® SR: Superior Resistance engine for complex formulas (oil, biphase)
- Sinfonia® Elegance: noise-free and softer actuation
- Sinfonia® Infinite: long-lasting and voluminous mist

Closure Sizes

Crimp: 13, 15, 18, 20 mm

Screw: Europa 5 / 15-415, 18-400, 18-415, 20-410, 20-415, 22-410, 22-415, 24-410, 24-415, DIN18, CETIE 18

Snap: 20 mm

Output

0.05, 0.07, 0.10, 0.13, 0.19 ml

Applications

Body mist, deodorant, face mist, make up, hair mist, sun care, skin care, insect repellent, air freshener



Sprayette™ IV

Key Features

- Higher-output coarse mist sprayer
- Exceptional performance with aggressive formulas
- Wide range of spray pattern options
- Pure Path™ technology for a metal-free fluid pathway

Closure Sizes

24-410, 28-400, GS26

Output

0.35, 0.50, 0.70 ml

Applications

Hair care, air freshener, surface cleaning, surface disinfection, food



SP22 & SP22 Panache Pulse

Key Features

- Luxurious and versatile
- Available in a wide array of configurations
- Low minimum order quantities
- SP22 SR: Superior Resistance engine for complex formulas (oil, biphase)
- SP22 Panache Pulse: luxurious spray ideal for face mist, with an ultra-airy and enveloping mist

Closure Sizes

Crimp: 13, 15, 17, 18, 20 mm

Screw: Europa 5 / 18-400, 20-400, 20-410, 22-410, 24-410

Ferrule: 1"

Output

0.08, 0.13 ml

Applications

Face mist, makeup, shimmer body mist, hair oil, sun care, body mist, deodorant



SP32

Key Features

- Luxurious and versatile
- Available in wide array of configurations
- Low minimum order quantities
- SP32 SR: Superior Resistance engine for complex formulas (oils, biphase)

Closure Sizes

Crimp: 13, 15, 17, 18, 20 mm

Screw: Europa 5 / 18-400, 20-400, 20-410, 22-410, 24-410

Ferrule: 1"

Output

0.13, 0.23 ml

Applications

Sun care, body mist, body oil, hair oil, deodorant

Dispensers



D1™

Key Features

- Designed for high-output applications like shampoos, conditioners and body washes
- Water-shielding design stops water ingress and prevents bacteria growth
- High-output, high-profile
- Simple one-hand operation
- Special configurations allow lock-down (closed) shipping position
- Internal and external restrictor clips available to meet your desired output

Closure Sizes

33-400, 38-400, 43-400, 110-400, 63-400, 63-485, 70-400, 89-400

Output

7 to 30 ml

Applications

High-output soaps and lotions, food, hair products, complex or aggressive formulas



Harmony®

Key Features

- Different looks available with standard head and closure options
- Ideal for liquid soaps and lotions, metal-sensitive and high-viscosity formulas
- Lock-up or lock-down design
- Pure Path™ technology for a metal-free fluid path
- Extra protection for sensitive formulas

Closure Sizes

24-400 (ribbed only), 24-410, 24-415, 28-410, 28-415

Output

2 ml

Applications

Soaps, lotions, metal-sensitive and high-viscosity formulas



P2000™

Key Features

- Different looks available with standard head and closure options
- Ideal for liquid soaps and lotions, metal-sensitive and high-viscosity formulas
- Lock-up design
- Pure Path™ technology for a metal-free fluid path
- Extra protection for sensitive formulas

Closure Sizes

24-410, 24-415, 28-410

Output

2 ml

Applications

Everything from creams and tonics to hair care products and liquid soaps



ReVive™ 2cc

Key Features

- 100% polyolefin
- Fully recyclable on PET and HDPE bottles
- ISTA 6A e-commerce certified on 28 oz / 828 ml bottles without shipping clip
- Three tailored spring options and two tube types
- Complimentary lab services to help select optimal spring

Closure Sizes

Glossy or Smooth Matter: 28-410

Fine Ribbed: 28-410

Output

2 ml

Applications

Lotions, shampoo, conditioner, body wash, face wash, hand soap, sanitizer



SD® 20C

Key Features

- Intermediate output
- Advanced lock-down design
- Outstanding top-load support
- Wide variety of head designs
- Custom metal overshell available
- Range of options for packaging convenience and flexibility

Closure Sizes

24-410, 24-415, 28-400, 28-410, 28-415

Output

1.50, 2 ml

Applications

Body care, sun care, hair care, hand care, hand soap/sanitizer



SD200®

Key Features

- Intermediate output
- Advanced lock-down design
- Outstanding top-load support
- Wide variety of head designs
- Custom metal overshell available
- Range of options for packaging convenience and flexibility

Closure Sizes

24-400 (ribbed only), 24-410, 24-415, 28-410, 28-415

Output

2 ml

Applications

Soaps, lotions, shampoos, conditioners



SD® 400 & 800

Key Features

- Compatible with highly aggressive formulations
- Extremely low profiles require no special shelf heights when stacking
- All head styles and most configurations are available in lock-up (open) or lock-down (closed) positions
- Completely leak-proof dispensing system
- Restrictor clips available to meet your desired output
- Closures greater than 70mm available with off-center punch

Closure Sizes

28-400, 28-410, 33-400, 38-400, 89-400

Output

2 to 8 ml

Applications

High-output soaps and lotions, food, hair products, complex or aggressive formulas



ShowerGuard®

Key Features

- Easy, one-hand operation
- Designed for high-output applications like shampoos, conditioners and body washes
- Water-shielding design stops water ingress and prevents bacteria growth
- Modern, attractive profile

Closure Sizes

28-410, 28-415, 33-415, 38-400

Output

4 ml

Applications

High-output lotions and soaps, shampoos, conditioners, water-sensitive formulas

Deo Packaging



PET Roll-on

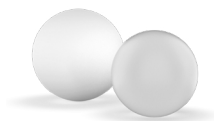
Key Features

- Smart 4-piece design: bottle, fitment, ball and cap
- Lightweight and optimized PET bottle
- Recycled materials for the complete pack optional
- Saving over 35% in carbon footprint and enhanced recyclability
- Advanced sealing and excellent pack tightness
- Cost-effective and easy bottle customization in stretch blown area

Technical Requirements

Standard 1.14" PE fitment and PP ball

Optional: Laser texture surface in mold on custom demand possible



Roll-on Balls

Key Features

- Available in PP and PE
- Can be supplied with or without fitment
- Fitment available for both plastic and glass bottle necks
- Customizable options available for your perfect fit
- PET Roll-on: 1.14" PE fitment and PP ball
- SealPack: 1.4" PP ball

Technical Requirements

Standard diameters of 1", 1.14", 1.3", 1.4", and 1.488"
Nominal dimensions can be adjusted to suit specific fitments/housing



SealPack

Key Features

- Lightweight 3-piece design: bottle, ball and screw cap
- Two standard designs, yet perfectly suitable for customization; cylindrical and cutaway
- Patented sealing feature improving pack tightness
- PP mono-material solution, PCR possible
- Lowering carbon footprint and enhanced circularity
- Convenient opening and closing
- All parts from one supplier for guaranteed compatibility and performance
- E-commerce proof

Technical Requirements

Standard 1.14" PP ball

Additional ball sizes available upon request



Sticks

Key Features

- 6-piece standard Deo Stick
- PP mono-material; PIR or mass balance to be discussed
- Bottom filling
- Colours and colour combinations on request

Technical Requirements

Max volume 50 ml

Aerosol Actuators



Jill

Key Features

- One-piece and POM-free, making it sustainable and 100% recyclable
- Fits necked-in tinplate cans and aluminium transfer cans
- Standard design, yet perfectly suitable for customization
- Consistent horizontal spray without clogging
- Various spray patterns tailored for your formula
- Matte surface finish

Technical Requirements

Diameter: 52 mm

Height: 43 mm

Applications

Hairspray, deodorant



Oscar

Key Features

- One-piece and POM-free, making it sustainable and 100% recyclable
- Fits necked-in tinplate cans and aluminium transfer cans
- Standard design, yet perfectly suitable for customization
- Consistent horizontal spray without clogging
- Various spray patterns tailored for your formula
- Matte surface finish

Technical Requirements

Diameter: 52 mm

Height: 45 mm

Applications

Hairspray, deodorant

Caps & Closures



CosmoTop

Key Features

- Lightweight, mono-material flip-top closures for tube ranges
- Standard and short height options available
- Lid design available for straight or rounded
- Active hinge system offering convenient usage
- Meets functional testing requirements
- Available in solid colours, transparent, translucent and opaque

Technical Requirements

Diameters: 35 mm, 40 mm, 50 mm; various orifices
Various orifices

Applications

Skincare, personal care, sun care, hair care, kids care



Lid-on-Pouch

Key Features

- Suitable for flexible pouches
- One-piece PP mono-material, ensuring easy recyclability, PCR option available
- Robust hinge for easy opening and closing
- Standard designs, yet suitable for customization
- In-mold label
- Standard colour white, alternative colours on request
- Surface finish available in matte or gloss

Applications

Wet wipe to be mounted on a flowpack by customer



Nube Jars

Key Features

- Ideal to complement a complete packaging range
- Efficient handling and processability on high-speed filling lines
- PP material allows easy recyclability
- The screw lids ensure a secure and reliable seal on the jars
- Gloss surface finish
- Large colour range; also translucent and metallic options

Technical Requirements

Fill volume: 200 ml, 300 ml

Diameter: 81 mm

Applications

Hair care, body care

Foam



EZ'R

Key Features

- Designed for one-step filling process
- Patented squeeze technology on the market
- Unique one-handed upside down use
- Easier gesture: Ready to use, no priming
- Recyclable product: 100% plastic product including 97% of PP material, POM-free
- Assembled with flip-top cap

Closure Sizes

Snap-on 26 mm

Volume Filling

EU: 100, 160 ml

US: 160, 200 ml

Output

1.0, 1.3, 1.5, 1.8

Decoration

Silk screening, labeling

Applications

Skincare, bath and shower, kids care, hair care, home care



F2

Key Features

- Most popular foamer design
- Simple gesture for a propellant-free foam
- Intuitive and smooth actuation, fits perfectly in hands
- Stable foam quality and precise dosages
- Pre-assembled with plastic cap
- Various nozzle designs: classic, fancy, satiny
- Premiumization with Velvet formula enhancement

Closure Sizes

Screw-on 43 mm

Output

Liquid: 0.75 ml (L11), 1.2 ml (L9), 1.5 ml (L7)

Foam: 9 ml (L11), 12 ml (L9), 12 ml (L7)

Decoration

Silk screening, hot-stamping

Applications

Skincare, personal care, sun care, hair care, kids care



F3

Key Features

- Rounded shape design
- Simple gesture for a propellant-free foam
- Intuitive and smooth actuation, fits perfectly in hands
- Stable foam quality and precise dosages
- Pre-assembled with plastic cap
- Various nozzle designs: classic, fancy, satiny
- Premiumization with Velvet formula enhancement

Closure Sizes

Screw-on 43 mm

Output

Liquid: 0.75 ml (L11), 1.2 ml (L9), 1.5 ml (L7)

Foam: 9 ml (L11), 12 ml (L9), 12 ml (L7)

Decoration

Silk screening, hot-stamping

Applications

Skincare, personal care, sun care, hair care, kids care



G3

Key Features

- The design
- Simple gesture for a propellant-free foam
- Intuitive and smooth actuation, fits perfectly in hands
- Stable foam quality and precise dosages
- Pre-assembled with plastic cap
- Various nozzle designs: classic, fancy, satiny
- Premiumization with Velvet formula enhancement

Closure Size

Screw-on 40 mm

Output

Liquid: 0.75 ml (L11), 1.2 ml (L9), 1.5 ml (L7)

Foam: 9 ml (L11), 12 ml (L9), 12 ml (L7)

Decoration

Silk screening, hot-stamping

Applications

Skincare, personal care, sun care, hair care, kids care



M3

Key Features

- The classic travel-size
- Intuitive and smooth actuation, fits perfectly in hands
- Stable foam quality and precise dosages
- Pre-assembled with plastic cap
- Nozzle design options: classic, mini satiny
- Premiumization with Velvet formula enhancement

Closure Sizes

Screw-on 30 mm

Output

Liquid: 0.6 ml (S6), 0.4 ml (S10)

Foam: 4.4 ml (S6, S10)

Decoration

Silk screening, hot-stamping

Applications

Skincare, personal care, sun care, hair care, kids care



WRD4

Key Features

- Compact and kid-friendly
- Ideal for travelling, easy to transport
- Intuitive and smooth actuation, fits perfectly in hands
- Stable foam quality and precise dosages
- Water-resistant: perfect for bathroom applications
- Premiumization with Velvet formula enhancement

Closure Sizes

Screw-on 30 mm

Output

Liquid: 0.6 ml (S6), 0.4 ml (S10)

Foam: 4.4 ml (S6, S10)

Decoration

Silk screening, hot-stamping

Applications

Personal care, hand soap, shower



WRM3

Key Features

- Lockable travel-size
- Water-resistant: perfect for bathroom applications
- Intuitive and smooth actuation, fits perfectly in hands
- Stable foam quality and precise dosages
- Premiumization with Velvet formula enhancement

Closure Sizes

Screw-on 30 mm

Output

Liquid: 0.6 ml (S6), 0.4 ml (S10)

Foam: 4.4 ml (S6, S10)

Decoration

Silk screening, hot-stamping

Applications

Personal Care



WRT4

Key Features

- Water-resistant table-top foamer
- Locking system
- Shelf differentiation
- Water-resistant: perfect for bathroom applications
- Intuitive and smooth actuation, fits perfectly in hands
- Stable foam quality and precise dosages
- Premiumization with Velvet formula enhancement

Closure Sizes

Screw-on 40 mm

Output

Liquid: 0.75 ml (L11), 1.2 ml (L9), 1.5 ml (L7)

Foam: 9 ml (L11), 12 ml (L9), 12 ml (L7)

Decoration

Silk screening, hot-stamping

Applications

Personal Care, hand soap, kids care



WRT6

Key Features

- Water-resistant table-top foamer
- Locking system
- Shelf differentiation, ideal for hand soap
- Water-resistant: perfect for bathroom applications
- Intuitive and smooth actuation, fits perfectly in hands
- Stable foam quality and precise dosages
- Premiumization with Velvet formula enhancement

Closure Sizes

Screw-on 40 mm

Output

Liquid: 0.75 ml (L11), 1.2 ml (L9), 1.5 ml (L7)

Foam: 9 ml (L11), 12 ml (L9), 12 ml (L7)

Decoration

Silk screening, hot-stamping

Applications

Personal Care, hand soap, kids care



Foam Dispensing Systems



Advanced dispensing solutions for the full spectrum of foam products

Our pumps and bottles are designed to deliver superior performance at home and on the go.

Pumps & Options

F2 (neck Ø43 mm) **F3** **G3** (neck Ø40 mm)



HANDHELDS RANGE

Engine L11 / Output 0.75 ml
 Engine L9 / Output 1.2 ml
 Engine L7 / Output 1.5 ml

Sleeving service on the pump, available in Europe. Transparent, with tear strip, 50 µm.¹

Available with Velvet

M3 **WRM3** **WRD4** (neck Ø30 mm)



TRAVEL SIZE RANGE

Engine S10 / Output 0.4 ml
 Engine S6 / Output 0.6 ml

Sleeving service available on the M3 pump, in Europe. Transparent, with tear strip, 50 µm.¹

Available with Velvet

WRT4 **WRT6** (neck Ø40 mm)



TABLETOPS RANGE

Engine L11 / Output 0.75 ml
 Engine L9 / Output 1.2 ml
 Engine L7 / Output 1.5 ml

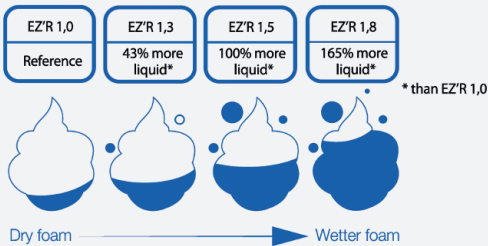
Available with Velvet

EZ'R (neck Ø26 mm)



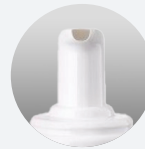
THE UNIQUE UPSIDE-DOWN SQUEEZE FOAMER

1 EZ'R foamer, 4 liquid outputs, a range of foam styles



NOZZLES

Available for F2, F3 and G3 (EU production only)



SATINY

- The must-have elegant design
- Soft surface for a delicate gesture
- New, higher overcap
- Mini version available for M3



FANCY

- The stylish design for on-shelf stand out
- New finger indent for intuitive gesture
- Suitable with all handheld overcaps

INTRODUCING VELVET

Velvet is an innovative new foam texture that delivers exceptional volume, density and smoothness through proprietary engine technology.



WITH VELVET














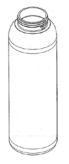
WITHOUT VELVET

¹ Sleeving service integrated during foam pump assembly on a single location: Silgan Dispensing (The Netherlands - Europe)

² Available in US & Asia only

Explore a world-class portfolio of foam pumps and bottles

There are many reasons consumers prefer foam dispensing in their beauty and personal care products. It clings well, is easy to spread, rinses completely and feels pleasant to touch. Not only that, foam is a more sustainable option, requiring 22%-100% less water than other solutions.¹

| Bottles | F2 F3 | | G3 | | | | | M3 | WRM3 | WRD4 | | | |
|------------------------------------|---|---|---|---|---|---|--|---|---|---|---|---|------|
| |  |  |  | | | | |  |  |  | | | |
| |  |  |  |  |  |  |  |  |  |  |  |  | |
| BOTTLE NAME | 43C1 | | 43D1 | 40O2 | 40O1 | 40C2 | 40O4 | 40T2 | 30C2 | 30C4 | 30C1 | 30C7 | 30C8 |
| Available volumes in EU (ml) | 100 / 125 / 150 / 200 / 250 | - | 150 | - | 250 | 150 | - | - | 50 | - | - | - | - |
| Available volumes in US (ml) | 100 / 125 / 150 / 210 | 210 / 250 | - | 150 | - | 180 | 210 | 250 | 50 | 125 / 150 | 50 / 75 | 250 | 200 |
| Material | HDPE | PET | HDPE | HDPE | | | | | HDPE | PET | | HDPE | |
| Production method | EBM | IBM | EBM | EBM | | | | | EBM | IBM | | EBM | |
| Standard bottle color ² | White or Natural | Clear | White or Natural | White or Natural | | | | | White or Natural | | Clear | White or Natural | |
| Fixation system | Screw-on | | | Screw-on | | | | | Screw-on | | | | |

Overcap Options

| PUMP | F2 | F3 | G3 | M3 |
|---|-----|-----|-----|-----|
| Standard transparent | Yes | Yes | Yes | Yes |
| Standard colored (translucent or opaque) | Yes | Yes | Yes | Yes |
| Standard frosted* | Yes | Yes | Yes | Yes |
| Standard frosted colored* (translucent or opaque) | Yes | Yes | Yes | Yes |
| Straight frosted* | Yes | No | No | No |
| Straight frosted colored* (translucent or opaque) | Yes | No | No | No |

*EU production only for the frosted overcaps

Our broad portfolio of foam dispensers for facial care, hair care, body care and beyond gives you the flexibility to create a solution that delivers the elegant experience consumers desire while distinguishing your brand on the shelf.

| WRT4 WRT6 | | | | | | EZ'R | | |
|---|---|---|---|---|---|---|--------|---------------------|
| | | | | | | 100 ml | 160 ml | 200 ml ³ |
|  | | | | | |  | | |
|  |  |  |  |  |  |  | | |
| 4001 | 40T2 | 40T3 | 40T4 | 40T5 | 40O3 | O2 | | |
| 250 | - | - | 550 | 250 | - | 100 / 160 | | |
| - | 250 | 550 | 550 | - | 250 | 100 / 200 | | |
| HDPE | | | | | PET | PP | | |
| EBM | | | | | IBM | EBM | | |
| White or Natural | | | | | Clear | White | | |
| Screw-on | | | | | | Snap-on | | |

Decoration Options

| | BOTTLE | | BASE CAP | | NOZZLE | |
|----------------------------------|--------|-----|----------|-----|--------|-----|
| | EU | US | EU | US | EU | US |
| Custom color matching | Yes | Yes | Yes | Yes | Yes | Yes |
| Hot stamping⁴ | Yes | No | Yes | Yes | No | Yes |
| Silkscreening⁴ | Yes | No | No | No | No | No |

¹ Source: 2011 internal research

² Custom color matching available

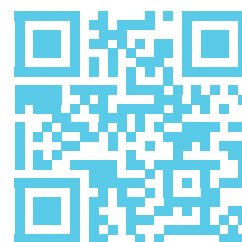
³ Available in US & Asia only

⁴ On demand: hot stamping and silkscreen possibilities depend on the bottle shape and the base cap type

⁵ All North American produced bottles are available in PCR and Bio-Based materials

Scan to Perfect Your Foam

Get expert guidance to achieve the ideal foam texture, enhance user satisfaction, and streamline formulation. Tap into our expertise and explore world-class foam dispensing solutions today!





Fragrance Dispensing Systems



Delight consumers with an enhanced fragrance dispensing experience

In a world of savvier consumers with higher expectations, Silgan Dispensing provides a variety of ways to reinforce brand cues, premiumize products, and create new occasions for consumers to indulge in your brand.

Our wide range of products deepens brand engagement across the consumer journey—from attracting consumers with samplers and minis to creating a luxurious experience with our fragrance pumps, and introducing new gestures and usage occasions through our refill solutions for at-home and on-the-go fragrance.



Create a personalized & sustainable dispensing experience with our broad portfolio

- **Extensive portfolio** answering to a wide variety of brand positioning needs
- **The Emotions of Spray Collection**, a wide array of sprays to support your product positioning while meeting consumer preferences—creating an emotional connection to your brand
- **Easy, accessible and swift solutions** for spray cap extensions, with versionable molds and automated assembly to allow for greater creative freedom in design
- **Integrated decoration solutions** that give you more options for personalized design, including engraving and embossing, in-house laser marking and silk screening
- **Refill options** that support a more sustainable product lifecycle while offering a premium, intuitive and easy refilling experience—at home or on-the-go

Prestige Pumps



Melodie®

Key Features

- Discrete, low-profile design for prestige fragrance packaging
- Soft actuation
- Pre-compression spray technology for optimal performance
- Wide range of customization, including the spray through the Emotions of Spray Collection
- Click-on pump available and delivered preassembled

| | |
|--------------------------------------|---|
| Plastic Heads | 13 PP, 14.5 PP |
| Metal Heads | 11.8 E/11.8 EM/11.8 EH, 13E/13EM/13EH, 15 E/15 EH |
| Inserts | Narrow, medium (STD 30 M), wide (4050-30 M) |
| Crimp-on Ferrules | 13 mm (FEA, GPI), 15 mm (FEA, GPI), 17 mm (FEA), 18 mm (FEA, GPI), 20 mm (FEA) |
| Ferrule Heights | 5 (FEA), 6.15 (GPI) |
| Clikit® Metal Collars | 13 mm, 15 mm, 17 mm, 18 mm, bead option |
| Threaded Ferrules with Collar | GPI 18/410, Europa 4 |
| Outputs | 70 µl, 100 µl 30 µl (Melodie Touch®) |
| Customization | Customized extensions upon request |



Melodie Pirouette®

Key Features

- Luxury for Eco-conscious consumers
- Refillable solution with reusable packaging elements
- Guaranteed manufacturing quality
- Cost-effective solution versus metal
- Compatible with several bottleneck sizes

| | |
|---|---|
| Plastic Heads | 13 PP, 14.5 PP |
| Metal Heads | 11.8 E/11.8 EM/11.8 EH, 13E/13EM/13EH, 15 E/15 EH |
| Plastic Threaded Ferrule with Collar | Europa 4, SNI 13, SNI 15, SNI 17 |
| Outputs | 70 µl, 100 µl 30 µl (Melodie Touch®) |



XD 11®

Key Features

- Discrete and ultra-compact sprayer
- Ideal for premiumization and differentiation
- Neutral engine for better compatibility and formula preservation
- Wide range of customization options, including the Panache® spray

| | |
|--------------------------|--|
| Plastic Heads | 13 mm, 15 mm |
| Metal Heads | 12 mm, 13 mm, 15 mm |
| Inserts | Standard, Maxi-Mist®, Panache® |
| Crimp-on Ferrules | 13 mm (FEA), 15 mm (FEA, GPI), 17 mm (FEA), 18 mm (FEA), 20 mm (FEA) |
| Crimplless® | 13 mm (FEA), 15 mm (FEA, GPI), 17 mm (FEA) |
| Threaded Ferrules | CV13, CV15, Europa 4 |
| Outputs | 70 µl, 100 µl |
| Customization | Customized extensions upon request |



XD 11® Pirouette™

Key Features

- Sustainable solution for premium fragrance
- Allowing for refilling and recycling of the bottle
- Guaranteed manufacturing quality
- Cost-effective alternative versus metal
- Same external diameter as FEA 15 mm
- Available in travel size

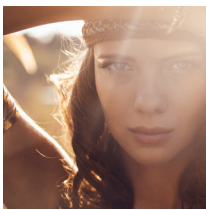
| | |
|---|---------------|
| Metal Heads | 12 mm, 13 mm |
| Plastic Threaded Ferrule with Collar | SNI 15 |
| Outputs | 70 µl, 100 µl |

The Emotions of Spray Collection



Melodie Forever®

- Prolonged, fine atomization
- Controllable actuation
- Discrete, soft and constant
- Unique sound
- Airy, wrapping and voluminous



Melodie Mystery®

- Long and enveloping spray
- More refined, elegant and intimate feeling
- Precision and sensuality



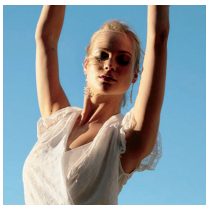
Melodie Agile®

- Solid and precise actuation
- Homogenous, focused, efficient
- Discrete sound
- Fine, powerful dispersion



Melodie Pure®

- Fine atomization
- Ideal for water-based formulations
- Small output to avoid excessive wet feeling
- Prolonged, soft spray
- Controllable actuation



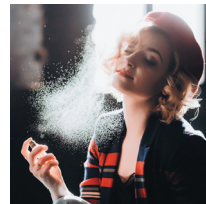
Melodie Delicate®

- Ultra-feminine
- Infinitely discrete and elegant
- Small and focused spray
- Soft and quiet



Maestro Extravagant®

- Exceptionally voluminous spray mist
- Long and sustained in the air
- Refreshing and airy
- Exuberant and indulging



XD 11® Panache®

- Very long and voluminous spray
- Sustained spray duration
- Extremely fine droplets for a dry and airy mist
- A world of purity, opulence and sensuality

Lifestyle Pumps



Aspire®

Key Features

- Premium economy
- Low-profile, modern aesthetics
- Cost-effective solution
- Superior performance for target market
- Standard configuration for faster lead times

| | |
|----------------------|-------------------------------|
| Plastic Heads | 13 mm, 15 mm |
| Metal Heads | 13 mm, 15 mm |
| Inserts | NN standard nebulization |
| Crimp-on | 15 mm (FEA, GPI), 20 mm (FEA) |
| Clikit® | 15 mm (FEA, GPI) |
| Outputs | 100 µl, 130 µl |



Aspire® Pirouette™

Key Features

- For Eco-conscious consumers
- Allowing for refilling and recycling of the bottle
- Guaranteed manufacturing quality
- Cost-effective solution

| | |
|---|----------------|
| Plastic Head | 13mm |
| Metal Head | 13mm |
| Plastic Threaded Ferrule with Collar | SNI 15 |
| Outputs | 100 µl, 130 µl |



LPP

Key Features

- Based on a solid and proven design
- Robust and reliable
- Superior spray quality through pre-compression technology
- High profile for massive packaging
- Gasket-free fastening technology for maximum compatibility with fragrance

| | |
|--------------------------|--|
| Plastic Heads | 12 mm, 13 mm, 15 mm |
| Metal Heads | 12 mm, 13 mm, 15 mm |
| Crimp-on Ferrules | 13 mm (FEA, GPI), 15 mm (FEA, GPI), 17 mm (FEA), 18 mm (FEA), 20 mm (FEA, GPI) |
| Crimpless® | 13 mm (FEA, GPI), 15 mm (FEA, GPI), 17 mm (FEA), 18 mm (FEA), 20 mm (FEA, GPI) |
| Outputs | 70 µl, 100 µl, 140 µl |



Maestro®

Key Features

- Exceptionally smooth actuation
- Adaptable to most bottle designs
- Excellent compatibility for a wide range of formulas
- Features a pre-compression spray, ideal for spraycaps
- Additional voluminous spray options available with Maestro Extravagant*

| | |
|--------------------------|---|
| Plastic Heads | 13.2 PP, 15.15 PP, 15.15H PP, 18.35 PP |
| Metal Heads | 11.8-E/11.8-EH, 13-E/13-EH, 15-E/15-EH, 19E |
| Inserts | Narrow, medium (STD 30 M), wide (4050-30 M) |
| Crimp-on Ferrules | 13 mm, 15 mm, 17 mm, 18 mm, 20 mm |
| Threaded Ferrules | 20-400 (GPI) |
| Tower Heights | 5, 5.8 |
| Outputs | 70 µl, 100 µl 140 µl (Maestro® and Maestro Extravagant*) |
| Customization | Customized extensions upon request |



Orchestra®

Key Features

- Low actuator height for a low-profile and compact design
- Highly versatile design with attractive solutions for many packaging requirements
- Available in a variety of sizes and options, from crimped to screw pump versions to metal, plastic and customized colors

| | |
|--------------------------|--|
| Plastic Heads | ERLP 13, ERLP 15 |
| Metal Heads | ERLP 13R, ERLP 15R, ERLP H13R |
| Inserts | NN standard nebulization, HN high nebulization |
| Crimp-on Ferrules | 13 mm, 15 mm, 17 mm, 18 mm, 20 mm |
| Threaded Ferrules | LFV 180 (18-400), LFV EU4 (Europa 4) |
| Outputs | 70 µl, 100 µl, 130 µl |
| Overcaps | Long Tri-cap 15-25 |



SLPP

Key Features

- Discrete and compact design
- Robustness proven over more than 25 years of experience
- High spray quality and smooth actuation
- Gasket-free fastening technology for maximum compatibility with fragrance

| | |
|--------------------------|---|
| Plastic Heads | 13 mm, 15 mm |
| Metal Heads | 12 mm, 13 mm, 15 mm |
| Crimp-on Ferrules | 13 mm (FEA, GPI), 15 mm (FEA, GPI), 17 mm (FEA) |
| Crimless® | 13 mm (FEA, GPI), 15 mm (FEA, GPI), 17 mm (FEA) |
| Threaded Ferrules | Europa 4, 20-400 (GPI), 24-400 (GPI) |
| Outputs | 70 µl, 120 µl |

Give consumers the opportunity to try your fragrance and take it on-the-go

Consumers appreciate the opportunity to try products before they purchase. Our broad portfolio of samplers, minis and travel-sized solutions supports every stage of the fragrance journey. Samplers start the consumer journey in the discovery phase, turning curiosity into engagement. Minis and travel sizes allow consumers to take their favorite fragrances with them—reinforcing brand loyalty through convenience and continued use.

Samplers



Mini-Mist®

The cost-effective sampler

Key Features

- A simplified composition
- A lighter sampler
- Optimized cost per contact to reach a wider audience

Head

Snap'In

Bottles

Plastic bottle 1 ml

Output

40 µl

Customization

- Standard colors: black, white and natural
- Any specific colors available on request
- Bottle standard decoration: silk screening



Sofilux®

The versatile sampler

Key Features

- Chic and convenient
- Same gesture as retail product featuring the highest quality of spray
- Crystalline and neutral pump

Pump

Snap'In

Bottles

Glass bottle 1.5 ml and 2 ml = Ø 11.25 mm

Output

50 µl

Customization

- Standard colors: black, white and natural
- Any specific colors available on request
- Bottle standard decoration: enamel, gold and platinum



Sofix®

The best first impression for a lasting connection

Key Features

- Retail-quality spray performance
- Proven engine with over 20 years in the market
- Pure-path system for broad compatibility
- Simple, integrated production for bottle molding and silkscreening with a single pump for all formats

Pump

Sofix® Plastic Bottle

Snap-on with a universal collar and a Maxi-Mist® insert

- 1.2 ml
- Standard colors: black, white and natural (70% PCR for natural color)
- Customization: custom color upon request
- Decoration: silk-screening

Sofix® Glass Vials

- 1.5 ml, 2 ml
- Decoration: silk-screening

Output

50 µl

Minis & Travel Size



Sofilux® Minis

The travel and discovery retail offer

Key Features

- For travel-sized product, discovery set offer or gift with purchase
- Sofilux Minis Plastic and Sofilux Minis Metal available
- The highest quality of spray for a luxury experience
- Crystalline and neutral pump

Sofilux Minis Plastic

Snap-in (11.23 mm external \varnothing) + assembled dip tube
Threaded plastic ferrule EU3 + plastic head

- Standard colors: black, white or natural
- Customization: available on request
- Plastic cap available

Sofilux Minis Metal

Snap-in (12.45 mm external \varnothing) + assembled dip tube

- Standard colors: gold or silver
- Customization: anodization available on request
- Metal cap available

Output

50 μ l

Bottles

- Glass bottle 5 ml = \varnothing 14.25 mm
- Glass bottle 7.5 ml = \varnothing 14.25 mm
- Glass bottle 10 ml = \varnothing 14.25 mm
- Bottle standard decoration: enamel, gold or platinum



Sofilux® Minis TCS

The mini pump & mini retail product

Key Features

- Same performance as a retail product in a miniature design
- Discrete, crystalline pump
- Excellent compatibility via our neutral engine

Metal Crimpless®

TCS = \varnothing 11 mm + Metal Head

Output

50 μ l



XD 11® Pirouette™ & Melodie Pirouette®

Refillable on-the-go pack for vials

Key Features

- Eco-conscious product in a travel size
- Refillable solution with reusable packaging elements
- Guaranteed manufacturing quality
- Same high end spray experience and performance as on the retail pack
- Discreet luxury aesthetics — a low profile design with no visible engine
- Same external diameter as FEA 15 mm

Metal Heads

11.8 mm, 12 mm, 13 mm

Plastic Threaded Ferrule with Collar

SNI 15
EU4, SNI 13 (Melodie Pirouette only)

Outputs

30 μ l (Melodie Touch Pirouette), 70 μ l, 100 μ l

Elegant, sustainable solutions for fragrance

The Replay™ system—a fully recyclable, all-plastic refill solution—pairs with our Pirouette™ Technology. Designed to elevate the user experience, whether at home or on-the-go, our refill portfolio brings sustainability and sophistication into perfect harmony.

Refill Solutions



Replay™ Refilling Made Easy

Key Features

- Secure, no mess, no spilling
- Fast refilling—20 seconds for a 50 ml bottle
- Automatic stop when bottle is full
- No waste of fragrance left in the spout
- No need to turn on and off while filling
- Easy and intuitive. Just apply and push down
- Adaptable to a variety of bottle necks

| | |
|---|---|
| Material | 100% Plastic |
| Overcap | PET Plastic |
| Closure | 24-410 glass bottle, 24-410 aluminium bottle |
| Customization | Engraving, embossing, decoration |
| Can/Possible to refill bottles with a variety of necks | SNI 13, SNI 15, SNI 17, EU 4, GCMI 15, CV 13, CV 15 |



Replay™ Connector Ideal refilling solution for on-the-go travel packs

Key Features

- Effortless and secure
- Easy and intuitive. Just apply and push down
- Clean. No mess or spilling
- Automatic stop when vial is full
- Adaptable on to SNI 15 bottle neck to refill a variety of small fragrance bottles
- Sustainable all plastic using Silgan's LifeCycle™ Technology

| | |
|---|---|
| Material | 100% Plastic |
| Closure | SNI 15 glass bottle |
| Customization | Engraving, embossing, decoration |
| Can/Possible to refill bottles with a variety of necks | SNI 13, SNI 15, SNI 17, EU 4, GCMI 15, CV 13, CV 15 |



SILGAN
DISPENSING
Replay™
Refill System

Melodie
Prouette
SILGAN
DISPENSING

SILGAN
DISPENSING
Replay™
Connector





Home & Garden Dispensing Systems



Home & Garden Dispensing Solutions At a Glance

| | | VersaPlast® | SP05™ | SP05™ PC/PC USD | TS-800® | Mixor® HP | Mixor® MP | Mixor® HP Remote | Mini-Trigger™ Curve | Vela™ |
|----------------------------|-------------------------|-------------|---------|--------------------|------------------------------|------------------|------------------|---------------------|------------------------|---------|
| Output | | 1.25 ml | 1.25 ml | 1.20 ml 1.25 ml | 0.65ml 0.90 ml 1.30 ml | 1.3 ml 1.6 ml | 1.0 ml 1.3 ml | 1.3 ml 1.6 ml | 0.16 ml to 0.30 ml | 1.30 ml |
| Closure | 18-415 | | | | | | | | | |
| | 20-400 | | | | | | | | | |
| | 20-410 | | | | | | | | ● | |
| | GL 20 | | | | | | | | | |
| | 22-415 | | | | | | | | | |
| | 24-410 | | | | | | | | ● | |
| | GS 26 | | | | | | | | | |
| | 28-400 | | ● | ● | ● | ● | ● | ● | | ● |
| | 28-400 non-removable | ● | ● | ● | ● | ● | ● | ● | | ● |
| | 28-400 RIC | | | | ● | | | | | |
| | 28-410 US, 28-410 EU | ● | ● | ● | ● | | ● | | | ● |
| | 28x3 non-removable | | | | ● | | | | | |
| | 28-414 | | | | ● | | | | | |
| | PCO/BPF | | | | ● | | | | | |
| | 28-415 ratchet | | | | | | | | | |
| | 38-400 | | | | | | | ● | | |
| | 38-400 non-removable | | | | | | | ● | | |
| 38-415 ratchet | | | | | | | | | | |
| Spray Pattern | Stream | ● | | | ● | ● | ● | ● | | ● |
| | Spray | ● | ● | ● | ● | ● | ● | ● | ● | ● |
| | Barrel Foamer | ● | ● | ● | ● | ● | ● | ● | | ● |
| | Mesh Foamer/Door Foamer | ● | ● | ● | ● | | ● | | | |
| | Adjustable Nozzle | | | | | | | | | ● |
| | Custom | | | | | | | | | |
| Options | Child Safety | | ● | ● | | ● | ● | ● | | ● |
| | Bent Dip Tube | ● | ● | ● | ● | ● | ● | | | |
| | Security Clip | | | | ● | | | | | |
| | Upside-down | | | ● | | | | ● | | |
| | Labeling/Engraving | | | | ● | ● | ● | ● | | |
| | Hot Stamp | | | | ● | | | | | |
| | Tube Filter | | | | | | | | | ● |
| Production Facility | Europe | ● | ● | ● | ● | | | | | ● |
| | North America | ● | | ● | ● | ● | | | | |
| | Asia-Pacific | | | | ● | | ● | ● | ● | |
| | South America | | | | | | | | | |

Trigger Sprayers



Mini-Trigger™ Curve

Key Attributes

- Enhanced shelf presence
- Integrated button lock
- Ergonomic, easy-to-use design
- Suitable for medium- to high-viscosity gels and creams

Applications

Home, garden, auto, laundry, air

Closure Sizes

20-410 or 24-410

Output

0.16 to 0.30 ml



Mixor® HP & Mixor® MP

Key Attributes

- High-output performance
- High chemical compatibility
- Easy to actuate
- Reliable venting system
- Ergonomic, easy-to-use design
- Child-resistant (CR) feature available

Applications

Home, garden, auto, laundry, air, professional

Shrouds

Mixor® HP

Mixor® MP

Closure Sizes

28-400, 28-400 non-removable

28-400, 28-400 ABO, 28-410 ABO, 28-400 non-removable

Nozzles

Spray, spray/stream, barrel foamer, foamer attachment

Spray, spray/stream, barrel foamer, foamer attachment

Output

1.3, 1.6 ml

1.0, 1.3 ml



Mixor® HP Remote

Key Attributes

- High-output performance
- High chemical compatibility
- Ergonomic, easy-to-use design
- Remote trigger allows for more comfortable dispensing with larger containers and for longer distances
- 360° functionality
- Child-resistant (CR) feature available

Applications

Garden, auto, laundry, professional

Shrouds

Mixor® Remote, Mixor® Nested Remote

Closure Sizes

Snap adapt closure (38-400 or 38-400 non-removable) + connector, 38-400 closure + weighted tube end

Nozzles

Spray, spray/stream, barrel foamer

Output

1.3, 1.6 ml

Trigger Sprayers (continued)



SP05™

Key Attributes

- All-plastic construction
- Ergonomic, easy-to-use design
- High-output trigger sprayer in a compact, medium profile
- Unique aesthetic for shelf differentiation
- Child-resistant (CR) feature available
- High chemical compatibility
- Easy to fit into limited shelf height
- European production allows for speed to market
- SP05™R integrates LifeCycle™ Technology with a recyclable C-spring design

Applications

Home, garden, auto, laundry, air, professional

Closure Sizes

28-400, 28-400 non-removable, 28-410

Nozzles

On/off spray, barrel foamer, mesh foamer, door foamer

Output

1.25 ml



SP05™ PC/PC USD

Key Attributes

- Pre-compression engine with fine mist spray pattern for even coverage
- Integrated upside-down option for 360° coverage of hard-to-reach surfaces
- Multiple foamer options for diverse applications
- Ergonomic, easy-to-use design
- High-output trigger sprayer in a compact, medium profile
- Child-resistant (CR) feature available
- High chemical compatibility
- European production for increased speed to market

Applications

Home, garden, auto, laundry, air

Closure Sizes

28-400, 28-400 non-removable, 28-410

Nozzles

On/off sprayer, barrel foamer, welded mesh foamer, barrel foamer

Output

1.25 ml (SP05 PC),
1.20 ml (SP05 PC USD)



TS-800®

Key Attributes

- Trusted by major global brands
- Proven reliability and performance
- Customizable nozzles, shrouds, closures and triggers
- Reliable venting system

Applications

Home, garden, auto, laundry, air

Shrouds

Standard, Ergo®, Ergo® 1.3, Ergo® Plus, TS-800® Arc, TS-800® Contorno

Closure Sizes

28-400, 28-400 ABO (anti back off), 28-400 non-removable, 28-400 RIC, 28-410 US, 28-410 EU, 28x3 non-removable, 28-414, PCO/BPF

Nozzles

Spray, spray/stream, barrel foamer, mesh foamer, door foamer (spray/foam), fine mist

Triggers

Standard, bi-colored actuator (EU), bi-colored soft touch, 3-finger actuator (US)

Output

0.65, 0.90, 1.30 ml

Trigger Sprayers (continued)



VersaPlast®

Key Attributes

- 100% polyolefin design, certified recyclable*
- High chemical compatibility
- Ergonomic, easy-to-use design
- High-output trigger sprayer in a compact, medium profile
- Easy to fit into limited shelf height
- Unique aesthetic for shelf differentiation

Applications

Home, garden, auto, laundry, air

**RecyClass Certified B Grade on PET bottles using Recyclability Design Compatibility criteria*

Shrouds

Standard

Closure Sizes

28-400, 28-400 non-removable, 28-410

Nozzles

On/off spray, barrel foamer, mesh foamer, door foamer

Triggers

Ergo®

Output

1.20 ml

Professional Trigger Sprayers



Vela™

Key Attributes

- Versatile applications— consumer to industrial
- High chemical compatibility
- Ergonomic, easy-to-use design
- Wide, textured, easy-to-grip trigger
- Shipper sprayer
- Adjustable nozzle
- Fitted dip tube filter comes standard
- Child-resistant (CR) feature available

Applications

Home, garden, auto, laundry, air, professional, industrial

Shrouds

Standard

Closure Sizes

28-400, 28-400 non-removable, 28-410

Nozzles

Adjustable, foamer

Output

1.30 ml

Regular Sprayers



Mark VI® & Mark VII® Max

Key Attributes

Mark VI®

- Outstanding atomization and priming capabilities
- Highly cost-effective
- Easy-actuation head
- Built for 55% VOC formulations
- Wide range of spray pattern options

Mark VII® Max

- Primes high-viscosity products
- Outstanding atomization and priming capabilities
- Contemporary aesthetics
- Rounded or flat hood available
- 360° spraying option available
- Wide range of spray pattern options

Applications

Home, garden, auto, laundry, air

| | Mark VI® | Mark VII® Max |
|-----------------------|---|---|
| Closure Sizes | 18-415* 20-410** 22-415** 24-410** | 20-400* 20-410** GL 20* 22-415** 24-410** |
| Output | 0.14, 0.16 ml | 0.16, 0.18***, 0.21, 0.30 ml |
| Spray Patterns | Narrow, medium, wide | Narrow, medium, wide, extra wide |
| Options | | Inverted spraying, metal overshell |

*Ribbed version available

**Smooth or ribbed version available

***Inverted and GS only



Sprayette™ IV

Key Attributes

- Higher-output coarse mist sprayer
- Exceptional performance with aggressive formulas
- Wide range of spray pattern options
- Pure Path™ technology for a metal-free fluid pathway

Applications

Home, garden, auto, laundry, professional

Closure Sizes

24-410, GS 26, 28-400

Spray Patterns

Extra narrow, narrow, wide

Output

0.35, 0.50, 0.70 ml

Hose End Sprayers



Hayes™ HP-2 & Hayes™ HP-3

Key Attributes

- Proven quality and performance
- Designed for large-scale applications
- Ready-to-use, single-valve operation
- Variety of preset mix ratios available
- Quick connect unit available

Applications

Garden, auto, professional

Closure Sizes

HP-2
28-415
ratchet

HP-3
28-415
ratchet

Output Options

Flat fan
spray

Stream or
fan spray
(water-only
feature)

Output Rates

9.5 liter/min
@ 3.4 bar

5.3 liter/min
@ 3.4 bar

Mix Ratios

20:1 to 200:1

6:1 to 50:1



Mini-Turret™

Key Attributes

- Proven quality and performance
- Designed for large-scale applications
- Ready-to-use, single-valve operation
- Variety of preset mix ratios available
- Child-resistant (CR) feature available
- Quick connect unit available (EU standard)

Applications

Garden, auto, professional, outdoor

Closure Sizes

28-415 ratchet

Spray Patterns

stream or fan spray
(optional water-only feature)

Output Rate

5.3 liter/min @ 3:4 bar

Mix Ratio

15:1 to 200:1



SoloDex™

Key Attributes

- One-handed use
- Optimized ergonomics
- Proven air gap technology
- Dispersed via a fan pattern for maximum coverage
- Minimal part count
- Seamless connection to maximize grip area
- Finger indentations for secure grip

Applications

Lawn, Garden

Closure Sizes

28-415 ratchet

Spray Patterns

fan spray

Output Rate

2.5 gallons/min @ 50 PSI

Mix Ratio

20:1 to 280:1

Sustained Duration Sprayers



BOS® Enhanced

Key Features

- Narrow-aiming nozzle for better line of sight and accuracy
- Four unique spray patterns to meet a variety of applications
- Proprietary holster design that allows storage in two different orientations
- Weighted handle, back-textured hand guide and two-finger trigger for easy ergonomics
- Powerful spray performance with a four-battery gear pump
- Foaming nozzle option available

Applications

Auto, professional

Closure Sizes

Snap adapt closure 1.0 (38-400 removable or 38-415 non-removable)

Nozzles

Spray/stream, foaming

Output

2 to 3 ml per second

Options

Holder



Healthcare Dispensing Systems



Solutions for High Regulated Markets



Gemini™ BE Nasal Pump

Key Features

- Re-engineered spray adapter with control parameters and reliable engine
- High speed to the market
- Clean room, pharma-grade and ISO production
- High dosing accuracy
- Low strokes to prime
- Capability to match existing RLD devices across a range of formulations
- More than 40 different orifice configurations for Rx line of pumps
- Ability to modify spray characteristics like DSD, plume geometry and spray pattern

Closure Sizes

Screw (GL 18, GL 18 short, 18-410, 18-415, 20-400, GL 20—grooved & smooth, 22-415, pp 18S)
 Ferrule (20 mm), Snap (S 20, GS 20)

Color Options

Color options available for Nasal hoods and Finger pads

Outputs

0.050ml to 0.180ml



HiMark® CR

Key Features

- Integrated child-resistant locking feature that remains securely attached, eliminating the risk of accidental disposal
- Pinch-and-turn design relied on a simple action, not force, to open
- Audible click lets users know they've locked the bottle securely
- Ratcheted closure provides added security
- Excellent spray performance, even with viscous or no-drip formulations
- Incorporates standard closure design for easy integration with existing filling lines

Closure Sizes

GL 18, GP118-415

Output Range

0.050 ml to 0.190 ml



Iridya® (Preservative-free)

Key Features

- Preservative-free, multidose eye dropper
- Familiar squeeze-bottle dropper design
- Consumer-preferred design validated by qualitative testing
- Elongated tip for ease of use and precision
- Laser welded safety seal for security
- Tamper-evident tear-off strip
- Overcap for prolonged use and on-the-go lifestyles
- Low squeeze force
- Controlled application for exact dosing
- Compatible with most market formulations, from low to high viscosities
- Delivery system for both over-the-counter and prescription drugs
- Designed and challenge-tested for preservative-free formulations
- Entire device can be sterilized via gamma irradiation
- Drug Master File (DMF #34286)

Bottle Sizes and Makes

5 ml, 10 ml

White and transparent bottles available

Senior-friendly material for low bottle squeeze force

Options

Standard Hood, Isle Hood

Diverse colors on request

Outputs

25 to 45 µl, depending on formulation

Custom outputs available



Mark II™

Key Features

- Excellent atomization capabilities with great performance and quality
- All pharma-grade materials comply with European and U.S. regulations
- Standard white color; other colors available upon request
- Available with shipping clip for various sizes and outputs
- Available with protective hood for nasal adapters in custom colors
- Drug Master File (DMF #12223)

Closure Sizes

Many standard closure sizes

Output Range

0.100 to 0.200 ml



MK™

Key Features

- Outstanding performance and dose accuracy
- Accurate priming for OTC or Rx formulations
- All pharma-grade materials comply with European and U.S. regulations
- Compliant with the U.S. FDA nasal guidelines
- Standard white color; other colors available upon request
- Available with shipping clip for various sizes and outputs
- Available with protective hood for nasal adapters in custom colors
- Drug Master File (DMF #12223)

Closure Sizes

Many standard closure sizes

Output Range

0.050 to 0.180 ml



Monodose Nasal System

Key Features

- Improved ergonomic design for improved handling and usability
- Optimized one-handed actuation
- 360° use for delivery in any position
- Ready-to-use primeless activation
- Ease of use for non-medically trained individuals
- Microbiological integrity of the primary container
- Drug Master File (DMF #36731)

Color Options

Color options available for adapter and vial holder

Outputs

~100µl Depending on the vial and fill volume



PFP N™ (Preservative-free)

Key Features

- Full protection from microbiological contamination
- No silver spring, no oligodynamic components
- Shut-off valve to avoid contamination
- Sterile air filter system for bottle venting; non-venting version also available
- Entire pump can be sterilized via gamma irradiation
- Finger flange and hood can be easily customized
- Standard white color, with clear and custom colors available
- All pharma-grade materials comply with European and U.S. regulations
- Extensive reference list
- Drug Master File (DMF #23045)

Closure Sizes

Snap-on closure S20

Output Range

0.050 to 0.140 ml with customized intermediary outputs

Consumer Healthcare



Airless Range

Key Features

- Full range of airless packaging to dispense semi-solid formulas
- Protection against formula oxidation
- High restitution rate
- 360° dispensing
- Broad range of pump engines and complementary airless bottles or tubes

Bottle Volume

5 to 200 ml

Output Range

0.080 ml to 2.5 ml



Dispenser Range

Key Features

- Lock-up or lock-down designs available
- Wide variety of head designs
- Range of options for packaging convenience and flexibility

Closure Sizes

Ribbed: 24-400

Smooth or ribbed: 24-410, 24-415, 28-410, 28-415

Output Range

0.5 ml to 4 ml



Foamer Range

Key Features

- Propellant-free foamers
- Handheld, table-top or squeeze gesture
- Easy to actuate
- Broad customization options
- Complementary bottles with decoration options

Closure Sizes

30 mm, 40 mm, 43 mm

Output Range

0.4 to 1.5 ml



Sprayette™ IV

Key Features

- Pure Path™ technology for a metal-free fluid pathway
- Highly customizable with variety of output sizes and protective hoods
- Higher-output large mist sprayer
- Exceptional performance with aggressive formulas
- Wide range of spray pattern options
- High discharge volume for oral and topical applications

Closure Sizes

24-410, 28-400, Snap-on S26

Output Range

0.350 to 0.700 ml



Sinfonia®

Key Features

- Versatile product range with many options for outputs, closures and adapters
- Easily customized with numerous aesthetic options
- Topical, oral and nasal options available
- Dose counter and safety clip options available
- Suitable for non-drip nasal sprays and other viscous formulations
- Wide output range with many options
- For aggressive products, alternative materials can be provided for critical pump components
- Child-resistant option available
- Drug Master File (DMF #28564)

Closure Sizes

Many standard closure sizes

Output Range

0.050 to 0.190 ml



Mark VII® Max

Key Features

- Compatible with most high-viscosity formulations
- Spray and cream versions with excellent priming and smooth actuation
- Natural gasket for invisibility in translucent closures
- Variety of closures, heads, hoods and orifice cups for maximum flexibility and compatibility across platforms and product lines
- Inverted version available for upside-down spraying
- Drug Master File (DMF #22653)

Closure Sizes

Ribbed: GL 20, 20-400

Smooth or ribbed: 20-410, 22-415, 24-410

Snap-on: GS 30, GS 31

Ferrule: 20 mm

Outputs

0.160, 0.210, 0.300 ml, 0.180 ml for inverted version



Trigger Range

Key Features

- Full range of triggers from heavy-duty high-output models for professional applications to smaller, economical sprayers for ready-to-use products
- Proven reliability and performance
- Many spray, stream and foam configurations
- Multiple shrouds, closures and actuators
- High chemical compatibility
- Child-resistant option available
- Certified recyclable options available

Closure Sizes

28/400, 28/410 and non-removable closures available

Output Range

0.90 ml to 1.60 ml

Adapters

Nasal Applications



Round



Square



Oval



Mini



Ear Adapter



Shroud



Hexagon



Elegant

Oral Applications



Throat Adapter Short



Throat Adapter Medium



Throat Adapter
Medium + Protection



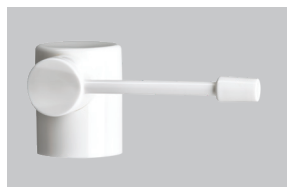
MTA5¹



Spray Extender²



Throat Adapter Long



Throat Adapter Articulated³



ATA 19



SATA Narrow

Topical Applications



Dispensing Head



Spray Head 16 mm



Spray Head with Capillary Tube⁴

Ophthalmic Applications



Spray Head 16 mm

All adapters fit on Mark II and MK with the below exceptions:

¹ MTA5 fits on Sinfonia

² Spray extender fits on Mark VII Max

³ Throat adapter articulated-F on ferrule only

⁴ Spray head on capillary tube on special request only

[Additional nasal, oral, topical and ear adapters available through partners](#)



Dispensing Closures





A better fit, a better experience

At Silgan Dispensing, we pride ourselves on creating state-of-the-art packaging solutions for the world's most admired brands. Together, our insight, expertise, ingenuity and agility provide our customers and theirs with a better dispensing experience.

Whether you are in the market for a standard or fully customized closure, we will collaborate closely with you on a solution that delivers superior performance, outstanding differentiation and seamless production. And, because we offer many customization capabilities in-house, we're able to create sophisticated closures that fit your needs without compromising speed-to-market.

If you're looking to deepen your understanding of consumer preference, improve product performance and serve up a fresher, safer and more convenient dispensing experience—we're here to help.



Standard Dispensing Closures

Spouts

Spouted and Applicator

- Pinpoint directional dispensing
- Dual color capability
- Orifice sizes from dropper to large rectangle
- Lining capability
- Child-resistant options available
- Friction fit and threaded
- Custom and stock
- Popular sizes for bottles, tubes and cans
- Ideal for chemical, automotive, household products and more



Polycam

Snap-Action and One-Piece Closures

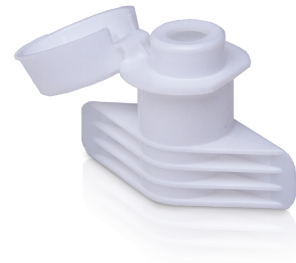
- Innovative designs for bottles, tubes and tottles
- Attractive smooth wall and serrated style
- Custom and stock
- Logo insert capability
- Lining capability
- Ergonomic thumb lifts
- Easy open/easy close
- Non-protruding hinges
- Clog-resistant orifices
- Friction fit and threaded
- Orifice sizes 1.5 mm (0.060") to 18.5 mm (0.728")



FlexFit™

One-Piece, Flip-Top Pouch Fitment

- Convenient, single-piece closure
- Quick and easy-to-use flip top
- Latch back feature allows for mess-free dispensing
- Less material than similar closures on the market
- Orifice sizes: 8.6 mm round, 6 mm round and 4x8.6 mm ribbon
- Suitable for food and non-food applications



Custom Dispensing Closures

Silgan Dispensing will assist you in bringing your ideas from concept to completion.

Design phase

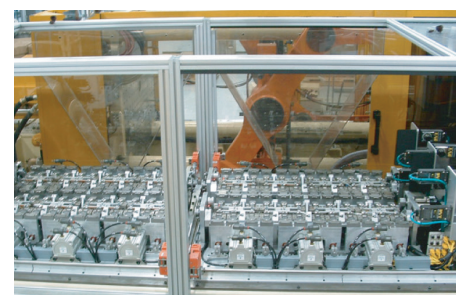
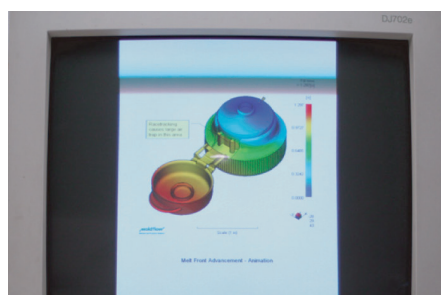
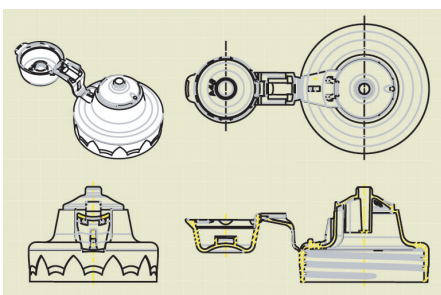
- Industrial design
- 3D concept renderings
- SLA presentation models

Engineering phase

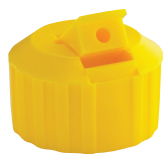
- Mold filling analysis
- Finite element analysis
- Prototype molded samples

Production phase

- High-volume turnkey systems
- Robotic automation
- 100% vision inspection



Spouted 28 mm



PS254

Size/Finish
28/400
Seal Type
Land
Lining
Yes

Emboss
No
Orifice Sizes
3 mm x 6 mm,
3 mm, 2.5 mm,
2 mm, 1 mm



PS255

Size/Finish
28/400
Seal Type
Combination
Lining
No

Emboss
No
Orifice Sizes
3 mm, 1.5 mm



PS256

Size/Finish
28/400
Seal Type
Land
Lining
Yes

Emboss
No
Orifice Sizes
3 mm, 1.5 mm



PS121

Size/Finish
28/410
Seal Type
Land
Lining
No

Emboss
No
Orifice Sizes
3 mm, 2.5 mm,
2 mm, 1 mm



PS134

Size/Finish
28/410
Seal Type
Land
Lining
No

Emboss
No
Orifice Sizes
3 mm x 6 mm,
3 mm x 4.5
mm, 3 mm,
2.5 mm, 2 mm,
1 mm



PS168

Size/Finish
28/410
Seal Type
Valve
Lining
No

Emboss
No
Orifice Sizes
3 mm, 2.5 mm,
2 mm, 1 mm



PS218

Size/Finish
28/410
Seal Type
Combination
Lining
No

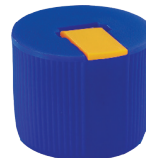
Emboss
No
Orifice Sizes
3 mm, 2.5 mm,
2 mm, 1 mm



PS187

Size/Finish
28/410
Seal Type
Valve
Lining
No

Emboss
No
Orifice Sizes
3 mm x 6 mm,
3 mm x 4.5 mm,
3 mm, 2.5 mm,
2 mm, 1 mm



PS259

Size/Finish
28/410
Seal Type
Liner
Lining
Yes

Emboss
No
Orifice Sizes
3 mm x 6 mm,
3 mm x 4.5 mm,
3 mm, 2.5 mm,
2 mm, 1 mm



PS326

Size/Finish
28/410
Seal Type
Land
Lining
Yes

Emboss
No
Orifice Sizes
3 mm x 6 mm,
3 mm x 4.5 mm,
3 mm, 2.5 mm,
2 mm, 1 mm



PS352

Size/Finish
28/410
Seal Type
Arc
Lining
Yes

Emboss
No
Orifice Sizes
3 mm x 6 mm,
3 mm x 4.5 mm,
3 mm, 2.5 mm,
2 mm, 1 mm

Spouted 24 mm



PS110

Size/Finish
24/410
Seal Type
Combination
Lining
No

Emboss
No
Orifice Sizes
3 mm, 2.5 mm,
1 mm



PS146

Size/Finish
24/410
Seal Type
Land
Lining
No

Emboss
No
Orifice Sizes
3 mm, 2.5 mm,
1 mm



PS147

Size/Finish
24/410
Seal Type
Valve
Lining
No

Emboss
No
Orifice Sizes
3 mm, 2.5 mm,
1 mm



PS258

Size/Finish
24/410
Seal Type
Land
Lining
Yes

Emboss
No
Orifice Sizes
3 mm x 6 mm,
3 mm x 4.5 mm,
3 mm, 2.5 mm,
2 mm, 1 mm



PS202

Size/Finish
24/410
Seal Type
Land
Lining
Yes

Emboss
No
Orifice Sizes
4 mm, 3 mm,
2.5 mm,
2 mm, 1 mm

Spouted 20 mm



PS115

Size/Finish
20/410
Seal Type
Land
Lining
No

Emboss
No
Orifice Sizes
3 mm, 2.5 mm,
2 mm, 1 mm



PS149

Size/Finish
20/410
Seal Type
Valve
Lining
No

Emboss
No
Orifice Sizes
3 mm, 2.5 mm,
2 mm, 1 mm



PS249

Size/Finish
20/410
Seal Type
Valve
Lining
No

Emboss
No
Orifice Sizes
3 mm, 2.5 mm,
2 mm, 1 mm

Polycam Smooth Walled



PS356

Size/Finish
24/410
Seal Type
Arc
Lining
Yes

Emboss
No
Orifice Sizes
6 mm,
4.75 mm,
3 mm, 1.5 mm



PS357

Size/Finish
24/415
Seal Type
Arc
Lining
No

Emboss
No
Orifice Sizes
6 mm,
4.75 mm,
3 mm, 1.5 mm



PS370

Size/Finish
28/410
Seal Type
Arc
Lining
Yes

Emboss
Yes
Orifice Sizes
6 mm,
4.75 mm,
3 mm, 1.5 mm



PS371

Size/Finish
28/415
Seal Type
Arc
Lining
No

Emboss
Yes
Orifice Sizes
6 mm,
4.75 mm,
3 mm, 1.5 mm



PS433

Size/Finish
28/410
Seal Type
Arc
Lining
Yes

Emboss
Yes
Orifice Sizes
6 mm,
4.75 mm,
3 mm, 1.5 mm

Polycam Inverted



PS408

Size/Finish
33/400
Seal Type
Arc
Lining
Yes

Emboss
No
Orifice Sizes
4 mm
Enhanced
Flow
Dispense



PS412

Size/Finish
33/400
Seal Type
Liner
Lining
Yes

Emboss
No
Orifice Sizes
6 mm
Baffled Flow
Dispense



PS413

Size/Finish
33/400
Seal Type
Liner
Lining
Yes

Emboss
No
Orifice Sizes
4.75 mm
x 19 mm
Ribbon



PS407

Size/Finish
38/400
Seal Type
Arc
Lining
Yes

Emboss
No
Orifice Sizes
4 mm
Enhanced
Flow
Dispense



PS409

Size/Finish
38/400
Seal Type
Arc
Lining
Yes

Emboss
No
Orifice Sizes
9.5 mm
Flow Through
Dispense



PS410

Size/Finish
38/400
Seal Type
Arc
Lining
Yes

Emboss
No
Orifice Sizes
6 mm
Baffled Flow
Dispense



PS414

Size/Finish
38/400
Seal Type
Liner
Lining
Yes

Emboss
No
Orifice Sizes
4.75 mm
x 19 mm
Ribbon



PS420

Size/Finish
38/400
Seal Type
Liner
Lining
Yes

Emboss
No
Orifice Sizes
18.5 mm
Flow Through
Dispense

Polycam Serrated/Food Closures



PS416

Size/Finish
38/400
Seal Type
Arc
Lining
Yes

Emboss
Yes
Orifice Sizes
7.6 mm
Baffled
Flow
Dispense



PS423

Size/Finish
38/400
Seal Type
Liner
Lining
Yes

Emboss
Yes
Orifice Sizes
Teardrop
w/ Pour Lip



PS368

Size/Finish
38/400
Seal Type
Liner
Lining
Yes

Emboss
Yes
Orifice Sizes
12.7 mm,
9.5 mm, 6 mm,
4 mm



PS381

Size/Finish
38/400
Seal Type
Arc
Lining
Yes

Emboss
Yes
Orifice Sizes
5 mm
x 24.5 mm
Ribbon



PS385

Size/Finish
38/400
Seal Type
Liner
Lining
Yes

Emboss
Yes
Orifice Sizes
5 mm
x 24.5 mm
Ribbon



PS386

Size/Finish
38/400
Seal Type
Arc
Lining
Yes

Emboss
Yes
Orifice Sizes
9.5 mm, 6 mm



PS354

Size/Finish
33/400
Seal Type
Liner
Lining
Yes

Emboss
No
Orifice Sizes
6 mm, 3 mm



PS439

Size/Finish
38/400
Seal Type
Liner
Lining
Yes

Emboss
Yes
Orifice Sizes
7.6 mm
Baffled Flow
Dispense



PS405

Size/Finish
33/400
Seal Type
Flexible Arc
Lining
Yes

Emboss
No
Orifice Sizes
6 mm Keyhole



PS446

Size/Finish
38/400
Seal Type
Liner
Lining
Yes

Emboss
Yes
Orifice Sizes
Silicone Valve

Tube Closures



PS391

Size/Finish 1.375" M8
Seal Type "V"
Lining Yes

Emboss Yes
Orifice Sizes 6 mm, 4.75 mm, 3 mm, 1.5 mm



PS441

Size/Finish 1.375" M8
Seal Type "V"
Lining Yes

Emboss Yes
Orifice Sizes 6 mm, 4.75 mm, 3 mm, 1.5 mm



PS418

Size/Finish 1.5" 22/400
Seal Type "V"
Lining Yes

Emboss Yes
Orifice Sizes 9.5 mm, 6 mm, 4.75 mm, 3 mm



PS442

Size/Finish 1.5" 22/400
Seal Type "V"
Lining Yes

Emboss No
Orifice Sizes 9.5 mm, 6 mm, 4.75 mm, 3 mm



PS392

Size/Finish 2" 22/400
Seal Type Plug
Lining No

Emboss Yes
Orifice Sizes 6 mm, 4.75 mm, 3 mm



PS419

Size/Finish 2" 22/400
Seal Type "V"
Lining Yes

Emboss Yes
Orifice Sizes 9.5 mm, 6 mm, 4.75 mm, 3 mm, 1.5 mm



PS406

Size/Finish 2" 22/400
Seal Type "V"
Lining Yes

Emboss No
Orifice Sizes 9.5 mm, 6 mm, 4.75 mm, 3 mm



PS415

Size/Finish 2" 22/400
Seal Type "V"
Lining Yes

Emboss Yes
Orifice Sizes 9.5 mm, 6 mm, 4.75 mm, 3 mm



PS425

Size/Finish 2" 22/400
Seal Type "V"
Lining Yes

Emboss Yes
Orifice Sizes 9.5 mm, 6 mm, 4.75 mm, 3 mm



PS444

Size/Finish 1.5" 22/400
Seal Type "V"
Lining Yes

Emboss Yes
Orifice Sizes 9.5 mm, 6 mm, 4.75 mm, 3 mm



PS445

Size/Finish 1.5" 22/400
Seal Type "V"
Lining Yes

Emboss Yes
Orifice Sizes 9.5 mm, 6 mm, 4.75 mm, 3 mm



PS448 (HDPE)

Size/Finish 2" 22/400
Seal Type "V"
Lining Yes

Emboss Yes
Orifice Sizes 9.5 mm, 6 mm, 4.75 mm, 3 mm, 1.5 mm



PS450 (HDPE)

Size/Finish 1.5" 22/400
Seal Type "V"
Lining Yes

Emboss Yes
Orifice Sizes 9.5 mm, 6 mm, 4.75 mm, 3 mm

Unique/Double Walled



PS424

Size/Finish
Pouch Fitment
Seal Type
N/A
Lining
Yes

Emboss
No
Orifice Sizes
6 mm



PS429

Size/Finish
Pouch Fitment
Seal Type
N/A
Lining
Yes

Emboss
No
Orifice Sizes
8.6 mm



PS430

Size/Finish
Pouch Fitment
Seal Type
N/A
Lining
Yes

Emboss
No
Orifice Sizes
4 mm x 8.6 mm
Ribbon



PS436

Size/Finish
43 mm SpH
Seal Type
Plug
Lining
No

Emboss
Yes
Orifice Sizes
19.5 mm



PS426

Size/Finish
38 mm SpH CR
(Ratchet)
Seal Type
Liner
Lining
Yes

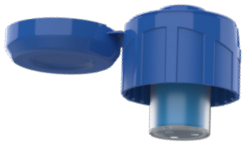
Emboss
No



PS428

Size/Finish
38 mm SpH
CR (Non-
Ratchet)
Seal Type

Liner
Lining
Yes
Emboss
No



MeaSURE™ 2

Size/Finish
28/410
Seal Type
Modified "V"
Lining
No

Emboss
No
Orifice Sizes
Silicoo Valve
or 5.0 mm

Friction Fit & Child-Resistant/ Applicator Caps



PS417

Size/Finish
33/400
Seal Type
Valve
Lining
No

Emboss
No
Orifice Sizes
3.8 mm



PS211

Size/Finish
28/410 CR
Seal Type
Valve
Lining
No

Emboss
No
Orifice Sizes
2 mm x 2 mm,
4 mm, 3 mm,
2 mm



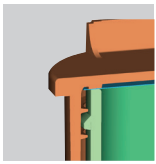
PS186

Size/Finish
5/8" FF, CR
Seal Type
Valve
Lining
No

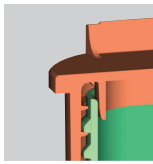
Emboss
No
Orifice Sizes
0.8 mm

CR caps may be included in child-resistant applications when appropriately tested and certified using your completed package.

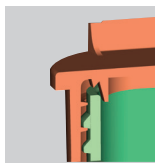
Seal Types



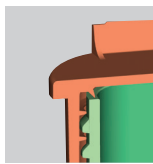
Flat/Liner Seal



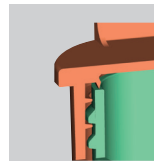
Plug Seal



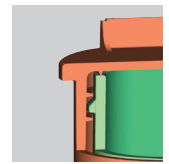
Combination Land
and Valve Seal



Arc Seal

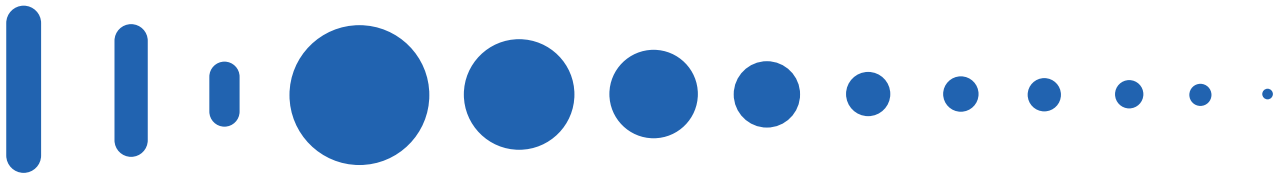


Valve Seal



"V" Seal

Orifice Sizes



5 mm x
24.5 mm
0.2" x
0.962"

4.75 mm
x 19 mm
0.188" x
0.75"

4 mm x
8.6 mm
0.160" x
0.339"

18.5 mm
0.728"

16 mm
0.625"

12.7 mm
0.5"

9.5 mm
0.375"

6 mm
0.25"

5 mm
0.2"

4.75 mm
0.188"

4 mm
0.160"

3 mm
0.125"

1.5 mm
0.06"

Dropper
Tip
0.4 mm
0.016"

0.8 mm
0.030"

1 mm
0.040"

1.5 mm
0.055"

2 mm
0.078"

Angle
Jet 2 mm
x 2 mm
0.076" x
0.076"

2.5 mm
0.093"

3 mm
0.125"

4 mm
0.160"

3 mm
x 4.5 mm
0.122" x
0.180"

3 mm
x 6 mm
0.122" x
0.244"

3.5 mm
x 6 mm
0.145" x
0.244"

4 Hole
Spray

Grow your sustainability story with our PCR portfolio

Silgan Dispensing is your partner in solving sustainability challenges through a broad portfolio of products featuring post-consumer recycled (PCR) plastic.

For more information, including the latest offerings from our color expansion, please contact your Silgan Dispensing sales representative.





Elevating the experience worldwide

With our responsive global network and team, you get a partner that's committed to delivering better experiences that move your brand and business forward.

silgandispensing.com/our-locations