



## Global Product Portfolio

# Fragrance



# Delight consumers with an enhanced fragrance dispensing experience

In a world of savvier consumers with higher expectations, Silgan Dispensing provides a variety of ways to reinforce brand cues, premiumize products and set your brand apart.

Our wide range of products deepens brand engagement across the consumer journey—from attracting consumers with samplers and minis to creating a luxurious experience with our fragrance pumps.

Trial



Market Penetration



Loyalty



## Create a personalized dispensing experience with our broad portfolio

- **Extensive portfolio** answering to a wide variety of brand positioning needs
- **The Emotions of Spray Collection**, a wide array of sprays to support your product positioning while meeting consumer preferences—creating an emotional connection to your brand
- **Easy, accessible and swift solutions** for spray cap extensions, with versionable molds and automated assembly to allow for greater creative freedom in design
- **A comprehensive range of dip tubes**, ranging from the patented NoC® invisible dip tube to colored options
- **Integrated decoration solutions** that give you more options for personalized design, including engraving and embossing, in-house laser marking, hot stamping and silk screening

# Melodie®



## Key Features

- Discrete, low-profile design for prestige fragrance packaging
- Soft actuation
- Pre-compression spray technology for optimal performance
- Wide range of customization, including the spray through the Emotions of Spray Collection

|                                      |  |
|--------------------------------------|--|
| <b>IP Heads</b>                      | 11.8 E IP/11.8 EH IP, 13 EH IP   |
| <b>Plastic Heads</b>                 | 13 PP, 14.5 PP   |
| <b>Metal Heads</b>                   | 11.8 E/11.8 EH, 13 E/13 EH, 15 E/15 EH   |
| <b>Inserts</b>                       | Narrow, medium (STD 30 M), wide (4050-30 M)                                    |
| <b>Crimp-on Ferrules</b>             | 13 mm (FEA, GPI), 15 mm (FEA, GPI), 17 mm (FEA), 18 mm (FEA, GPI), 20 mm (FEA) |
| <b>Threaded Ferrules with Collar</b> | GPI 18/410, Europa 4   |
| <b>Ferrule Heights</b>               | 5 (FEA), 6.15 (GPI)  |
| <b>Outputs</b>                       | 70 µl, 100 µl<br>30 µl (Melodie Touch®)  |
| <b>Customization</b>                 | Customized extensions upon request   |

# Melodie® Clikit® & Clikit® IP



## Melodie® Clikit® Key Features

- Click-on Melodie® pump delivered preassembled
- Reduced purchasing complexity
- Simplified process on filling lines for increased productivity and cost savings

|                      |  |
|----------------------|--|
| <b>Plastic Heads</b> | 13 PP, 14.5 PP   |
| <b>Metal Heads</b>   | 11.8 E/11.8 EH, 13 E/13 EH, 15 E/15 EH                                     |
| <b>Metal Collars</b> | 13 mm, 15 mm, 17 mm, 18 mm, bead option<br>(female bead in the upper area) |

## Melodie® Clikit® IP Key Features

- Resin-injected Melodie® Clikit® IP
- Precision-engineered components replicate traditional metal collars and actuator sheaths
- Highly customizable for the prestige market

|                   |                                       |
|-------------------|---------------------------------------|
| <b>IP Heads</b>   | 11.8 E IP/11.8 EH IP, 13 EH IP        |
| <b>IP Collars</b> | 13 mm (FEA), 15 mm (FEA), bead option |

# Melodie Pirouette®



## Key Features

- Eco-conscious
- Refillable solution with reusable packaging elements
- Guaranteed manufacturing quality
- Cost-effective solution
- Same external diameter as FEA 15 mm

|   |   |
|---|---|
| <b>IP Heads</b>                             | 13EH IP                                 |
| <b>Plastic Heads</b>                        | 13PP                                    |
| <b>Metal Heads</b>                          | 13E/EH                                  |
| <b>Plastic Threaded Ferrule with Collar</b> | Europa 4, GCMI 15, SNI 15, SNI 17       |
| <b>Outputs</b>                              | 70 µl, 100 µl<br>30 µl (Melodie Touch®) |

# XD 11®



## Key Features

- Discrete and ultra-compact sprayer
- Ideal for premiumization and differentiation
- Neutral engine for better compatibility and formula preservation
- POM-free option
- Wide range of customization options, including the Panache® spray

|                          |  |
|--------------------------|--|
| <b>Plastic Heads</b>     | 13 mm, 15 mm   |
| <b>Metal Heads</b>       | 12 mm, 13 mm, 15 mm  |
| <b>Inserts</b>           | Standard, Maxi-Mist®, Panache®                                       |
| <b>Crimp-on Ferrules</b> | 13 mm (FEA), 15 mm (FEA, GPI), 17 mm (FEA), 18 mm (FEA), 20 mm (FEA) |
| <b>Crimpless®</b>        | 13 mm (FEA), 15 mm (FEA, GPI), 17 mm (FEA)                           |
| <b>Threaded Ferrules</b> | CV13, CV15, Europa 4, GCMI 20  |
| <b>Outputs</b>           | 70 µl, 100 µl, 120 µl  |
| <b>Customization</b>     | Customized extensions upon request                                   |

# XD 11 Pirouette™



## Key Features

- Eco-conscious
- Refillable solution with reusable packaging elements
- Guaranteed manufacturing quality
- Cost-effective alternative
- Same external diameter as FEA 15 mm
- Available in travel size

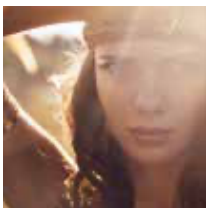
|   |                       |
|---|-----------------------|
| <b>Metal Heads</b>                          | 12 mm, 13 mm          |
| <b>Plastic Threaded Ferrule with Collar</b> | GCMI 15, SNI 15       |
| <b>Outputs</b>                              | 70 µl, 100 µl, 120 µl |

# The Emotions of Spray Collection



## Melodie Forever®

- Prolonged, fine atomization
- Controllable actuation
- Discrete, soft and constant
- Unique sound
- Airy, wrapping and voluminous



## Melodie Mystery®

- Long and enveloping spray
- More refined, elegant and intimate feeling
- Precision and sensuality



## Melodie Agile®

- Solid and precise actuation
- Homogenous, focused, efficient
- Discrete sound
- Fine, powerful dispersion



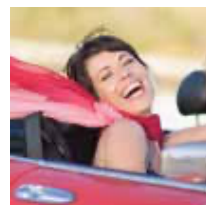
## Melodie Pure®

- Fine atomization
- Ideal for water-based formulations
- Small output to avoid excessive wet feeling
- Prolonged, soft spray
- Controllable actuation



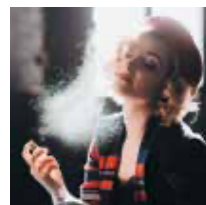
## Melodie Delicate®

- Ultra-feminine
- Infinitely discrete and elegant
- Small and focused spray
- Soft and quiet



## Maestro Extravagant®

- Exceptionally voluminous spray mist
- Long and sustained in the air
- Refreshing and airy
- Exuberant and indulging



## XD 11® Panache®

- Very long and voluminous spray
- Sustained spray duration
- Extremely fine droplets for a dry and airy mist
- A world of purity, opulence and sensuality



# SLPP



## Key Features

- Discrete and compact design
- Robustness proven over more than 15 years of performance
- High spray quality and smooth actuation
- Gasket-free fastening technology for maximum compatibility with fragrance

|                          |   |
|--------------------------|---|
| <b>Plastic Heads</b>     | 13 mm, 15 mm                                    |
| <b>Metal Heads</b>       | 12 mm, 13 mm, 15 mm                             |
| <b>Crimp-on Ferrules</b> | 13 mm (FEA, GPI), 15 mm (FEA, GPI), 17 mm (FEA) |
| <b>Crimless®</b>         | 13 mm (FEA, GPI), 15 mm (FEA, GPI), 17 mm (FEA) |
| <b>Threaded Ferrules</b> | Europa 4, 20-400 (GPI), 24-400 (GPI)            |
| <b>Outputs</b>           | 70 µl, 120 µl                                   |

# Orchestra®



## Key Features

- Low actuator height for a low-profile and compact design
- Highly versatile design with attractive solutions for many packaging requirements
- Available in a variety of sizes and options, from crimped to screw pump versions to metal, plastic and customized colors

|                          |  |
|--------------------------|--|
| <b>Plastic Heads</b>     | ERLP 13, ERLP 15                               |
| <b>Metal Heads</b>       | ERLP 13R, ERLP 15R, ERLP H13R                  |
| <b>Inserts</b>           | NN standard nebulization, HN high nebulization |
| <b>Crimp-on Ferrules</b> | 13 mm, 15 mm, 17 mm, 18 mm, 20 mm              |
| <b>Threaded Ferrules</b> | LFV 180 (18-400), LFV EU4 (Europa 4)           |
| <b>Outputs</b>           | 70 µl, 100 µl, 130 µl                          |
| <b>Overcaps</b>          | Long Tri-cap 15-25                             |

# Maestro®



## Key Features

- Exceptionally smooth actuation
- Adaptable to most bottle designs
- Excellent compatibility for a wide range of formulas
- Features a pre-compression spray, ideal for spraycaps
- Additional voluminous spray options available with Maestro Extravagant®

|                          |   |
|--------------------------|---|
| <b>Plastic Heads</b>     | 13.2 PP, 15.15 PP, 15.15H PP, 18.35 PP                              |
| <b>Metal Heads</b>       | 11.8-E/11.8-EH, 13-E/13-EH, 15-E/15-EH, 19E                         |
| <b>Inserts</b>           | Narrow, medium (STD 30 M), wide (4050-30 M)                         |
| <b>Crimp-on Ferrules</b> | 13 mm, 15 mm, 17 mm, 18 mm, 20 mm                                   |
| <b>Threaded Ferrules</b> | 20-400 (GPI)  |
| <b>Tower Heights</b>     | 5, 5.8  |
| <b>Outputs</b>           | 70 µl, 100 µl, 125 µl<br>140 µl (Maestro® and Maestro Extravagant®) |
| <b>Customization</b>     | Customized extensions upon request                                  |



# LPP



## Key Features

- Based on a solid and proven design
- Robust and reliable
- Superior spray quality through pre-compression technology
- High profile for massive packaging
- Gasket-free fastening technology for maximum compatibility with fragrance

**Plastic Heads** 12 mm, 13 mm, 15 mm

**Metal Heads** 12 mm, 13 mm, 15 mm

**Crimp-on Ferrules** 13 mm (FEA, GPI), 15 mm (FEA, GPI), 17 mm (FEA), 18 mm (FEA), 20 mm (FEA, GPI)

**Crimpless®** 13 mm (FEA, GPI), 15 mm (FEA, GPI), 17 mm (FEA), 18 mm (FEA), 20 mm (FEA, GPI)

**Outputs** 70 µl, 100 µl, 140 µl

# Aspire®



## Key Features

- Premium economy
- Low-profile, modern aesthetics
- Cost-effective solution
- Superior performance for target market
- Standard configuration for faster lead times

**Plastic Heads** 13 mm

**Metal Heads** 13 mm

**Inserts** NN standard nebulization

**Crimp-on** 15 mm (FEA, GPI), 20 mm (FEA)\*

**Clikit®** 15 mm (FEA, GPI)

**Output** 100 µl, 130 µl\*

\* under consultation

# Give consumers the opportunity to try your fragrance and take it on the go

Consumers appreciate the opportunity to try products before they purchase. Our broad portfolio of samplers, minis and travel-sized solutions allows you to build awareness and increase market penetration, while delivering an exceptional spray experience.

## Samplers

### Mini-Mist®

The cost-effective sampler



#### Key Features

- A simplified composition
- A lighter sampler
- Optimized cost per contact to reach a wider audience
- Same gesture as retail product featuring the highest quality of spray

#### Heads

XD10 Snap'In

#### Bottles

Plastic bottle 1 ml

#### Output

40 µl

#### Customization

- Standard colors: black, white and natural
- Any specific colors available on request
- Bottle standard decoration: silk screening, hot stamping

### Sofix®

The universal sampler



#### Key Features

- Only mini pump on the market designed to work with both plastic and glass bottles
- Same gesture as retail product featuring the highest quality of spray
- Crystalline and neutral pump

#### Heads

SP5K Snap'In with a universal collar and a Maxi-Mist® insert

#### Sofix® Bottles

Plastic bottle 1.2 ml

Glass bottle 1.5 ml

#### Sofix+ Bottles

Glass bottle 2 ml

#### Output

50 µl

#### Customization

- Standard colors: black, white and natural
- Any specific colors available on request
- Bottle standard decoration:
  - Plastic bottle: silk screening, hot stamping
  - Glass bottle: enamel, gold and platinum



# Sofilux®

The market sampler reference



## Key Features

- Chic and convenient
- Same gesture as retail product featuring the highest quality of spray
- Crystalline and neutral pump
- The beauty of glass with two different designs

## Heads

SP5K Snap'In F0 & F31

## Bottles

Glass bottle 1.5 ml F0 Slim design = Ø 9.25 mm

Glass bottle 1.5 ml and 2 ml F31 = Ø 11.25 mm

## Output

50 µl

## Customization

- Standard colors: black, white and natural
- Any specific colors available on request
- Bottle standard decoration: enamel, gold and platinum

## Range

Also available in 5 ml, 7.5 ml and 10 ml for gift with purchases and travel solutions

## Minis & Travel Size

# Sofilux®

The travel retail offer



## Key Features

- For travel-sized product, cross sampling offer or gift with purchase
- Two designs (plastic or metal pump + cap)
- The highest quality of spray for a luxury experience
- Crystalline and neutral pump

## Plastic Heads

SP5K Snap'In F31 + added dip tube

## Metal Heads

SP5K Snap'In FC11 + added dip tube

## Bottles

Glass bottle 5 ml = Ø 14.25 mm

Glass bottle 7.5 ml = Ø 14.25 mm

Glass bottle 10 ml = Ø 14.25 mm

## Output

50 µl

## Customization

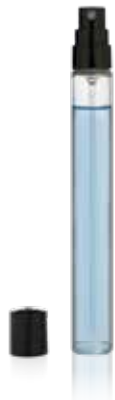
- Standard colors: black, white and natural
- Standard anodization: gold or silver
- Any specific colors or anodization available on request
- Bottle standard decoration: enamel, gold and platinum

## Range

Also available in smaller 1.5 ml and 2 ml sizes for your free sampler campaigns

# SP5K

The mini pump & mini retail product



### Key Features

- Same performance as a retail product in a miniature design
- Discrete, crystalline pump
- Excellent compatibility via our SP5K neutral engine

### Plastic Heads

F11

### Metal Heads

FC11

### Crimpless®

SP5K TCS = Ø 11 mm

### Threaded Ferrules

Europa 3

### Output

50 µl

# XD 11 Pirouette™

Refillable mini size



### Key Features

- Eco-conscious product in a travel size
- Refillable solution with reusable packaging elements
- Guaranteed manufacturing quality
- Cost-effective alternative
- Same external diameter as FEA 15 mm

### Metal Heads

12 mm, 13 mm

### Plastic Threaded Ferrule with Collar

GCM1 15

### Outputs

70 µl, 100 µl, 120 µl



# Helping Brands Achieve Greater Success

We are committed to supporting our customers' needs and helping them solve their challenges. Here are just a few of the brands we are proud to have partnered with.



## OFFICES

### North America

**Silgan Dispensing Headquarters**  
1001 Haxall Point, Suite 701  
Richmond, VA 23219 USA  
Phone: +1 (804) 444-1000

**Silgan Dispensing Office**  
845 3rd Avenue, Suite 623  
New York, NY 10022 USA  
Phone: +1 (646) 290-5205

**Silgan Dispensing Systems Canada Ltd.**  
7381 Bramalea Road  
Mississauga, ON Canada L5S 1S4  
Phone: +1 (905) 364-2675  
Fax: +1 (905) 364-2679

### Europe

**Silgan Dispensing Systems France S.A.S**  
**(not a selling entity)**  
10, rue de Chevreul  
92150 Suresnes  
France

**Silgan Dispensing Systems Netherlands**  
**B.V. (not a selling entity)**  
16 Professor Asserweg  
Waalwijk, NB 5144 NC  
North Brabant, Netherlands

### Asia

**Shanghai Office**  
Room 802, Nan Yang 1931 Building,  
No. 165 Yu De Road  
Shanghai 200030  
Phone: +86 21 6029 3681

**Silgan Dispensing Systems**  
**India Private Limited**  
Office #434, Regus, 4th Floor,  
Gumidelli Towers  
Old Airport Road, Begumpet  
Hyderabad 500016 Telangana India  
Phone: +91 7675803666 or  
+91 9619884663

## PLANTS

### North America

**Silgan Dispensing Systems Thomaston**  
**Corporation**  
60 Electric Avenue  
Thomaston, CT 06787 USA  
Phone: +1 (860) 283-2000

**Silgan Dispensing Systems**  
**Mexico S.A. de C.V.**  
Circuito Exportaciones 371  
Parque Industrial Tres Naciones  
San Luis Potosí, S.L.P. 78395 Mexico  
Phone: +011 52 444 870 1100

### South America

**Silgan Dispensing Systems Brazil**  
**Packaging Industry Ltda.**  
Estrada Municipal Governador Mário  
Covas, 600  
Valinhos, S.P., 13279-411, Brazil  
Phone: +55 19 3881 8803

**Silgan Dispensing Systems and**  
**Packaging do Brasil Industria de**  
**Embalagens Ltda**  
Rod. Dom Gabriel Paulino Bueno Couto,  
S/N KM 3,5 – Distrito Industrial  
Jundiaí, S.P., 13212-240, Brazil  
Phone: +55 11 2152 9800

### Europe

**Silgan Dispensing Systems Barcelona SL**  
Via Trajana, 25  
Barcelona, 08020 Spain  
Phone: +34 93 314 9111

**Silgan Dispensing Systems Milano S.r.l.**  
Strada Statale 35 dei Giovi, 1/B  
20080 Zibido San Giacomo, MI Italy  
Phone: +39 02 90 41 461

**Silgan Dispensing Systems Le Treport S.A.S.**  
15 Bis Route Nationale  
76470 Le Tréport, France  
Phone: +02 35 50 49 53