



Melodie®

Perfection // Emotion

Melodie® allows brands to capture the distinct personality of their luxury fragrances. This distinguished and discreet pump offers consumers an emotional experience that appeals to all their senses—from the feel of the spray on their skin to the gentle sound of the atomizer, creating a lasting connection to your brand. Our Melodie Touch™ mini spray option delivers a unique dispensing experience for concentrated formulas and touch-up applications.



Melodie®

Take your customers on a transformative journey of the senses

- Part of the Emotions of Spray Collection, with options to match the personality of your fragrance
- Tailored to both male and female consumers
- Discreet, low-profile design for prestige fragrance packaging
- Available with our patented NoC® invisible dip tube to increase the perception of luxury
- Soft force-to-actuate for a more refined experience
- Pre-compression spray technology delivers a more delicate spray pattern
- Eco-conscious option that lets consumers refill and recycle (Melodie Pirouette™)



Heads



Plastic
13 PP, 14.5 PP



IP
11.8 E IP/11.8 EH IP,
13 EH IP

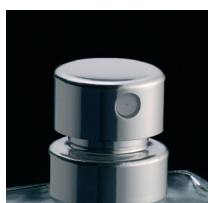


Metal
11.8 E/11.8 EH,
13 E/13 EH, 15 E/15 EH

Outputs

0.070 ml, & 0.100 ml (Melodie® & Melodie Agile™)
0.100 ml (Melodie Forever™ & Melodie Mystery™)
0.070 ml (Melodie Pure™ & Melodie Delicate™)
0.030 ml (Melodie Touch™)

Ferrules



13 mm**, 15 mm**, 17 mm*,
18 mm**, 20 mm*

Threaded Ferrules with Collar



Europa 4



GPI 18/410

Melodie Pirouette™



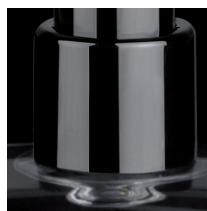
Europa 4, SNI 15,
SNI 17, bead option

Melodie Klikit® Metal Collars



13 mm, 15 mm, 17 mm,
18 mm, bead option

Melodie Klikit® IP Collars



13 mm*, 15 mm*



Bead Option

Customization

Customized extensions upon request
Laser decoration on metal heads

Note: All Melodie sprayers are compatible and exchangeable with existing Melodie specifications.

* FEA only

** FEA and GPI

© 2022 Silgan Dispensing Systems. All rights reserved worldwide.

silgandispensing.com/beauty // beauty@silgandispensing.com