

Product Guide

# Mark VII<sup>®</sup> Max

Provides smooth actuation and excellent priming  
for a wide range of formulations



## Features & benefits:

- Three output options in one pump: 0.160 ml, 0.210 ml and 0.300 ml
- Compatible with most high-viscosity formulations
- Topical and oral options available
- Spray and cream versions with excellent priming and smooth actuation
- Natural gasket for invisibility in translucent closures
- Variety of closures, heads, hoods and orifice cups for maximum flexibility and compatibility across platforms and product lines
- Upside down version available

### Adapters



compact



finger grooved



spray extender



Rhapsody®

### Overcaps



domed



flat

### Screw closures

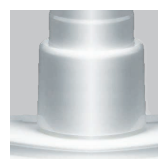


GL 20, 20-400 (ribbed)



20-410, 22-415, 24-410 (smooth or ribbed)

### Snap-on closures



GS30, GS31

### Ferrule closures



20 mm

### Output



0.160 ml, 0.210 ml, 0.300 ml  
GS30, GS31: with 0.180 ml only

### Options



upside down (0.180 ml and 0.210 ml outputs)  
\*upon available closure sizes

